

**WINGLET****Diagnostic**

Advanced software diagnostic for control optimization


**User-friendly**

User-friendly environment

**Advanced tools for fast setting**

WINGLET

Software

 *Engineered for semiconductor equipment
Suitable for all high-end positioning systems*

WINGLET is a Windows-based software designed to work with our AccurET/UltimET controllers, offering robust performance visualization, automated testing, and efficient troubleshooting capabilities.

This system serves various users throughout the process of device development and deployment, assisting them in design optimization, manufacturing robustness and field service operations.

Its functions are designed to improve machine performance, ensure manufacturing reliability, and facilitate accurate diagnostics.

PERFORMANCE VISUALIZATION, OPTIMIZATION, AND SIMULATION

WINGLET enables the measurement and display of key motion specifications, such as move-and-settle time and jitter, across the entire workspace. It allows for easy tuning of control parameters and simulation of their effects, saving time during the fine-tuning phase.

AUTOMATED TESTING

A significant portion of WINGLET is dedicated to automated testing and series-production qualification of motion systems and equipment. It runs user-defined test choreographies, compares results with specifications, and provides pass/fail status, thereby streamlining qualification processes from production to installation.

EFFICIENT TROUBLESHOOTING

In complex equipment-related issues, WINGLET helps minimize downtime by executing predefined sets of tests to visualize motion system behavior. Its user-friendly interface enables users to conduct tests without specialized skills, facilitating easy reporting and the sharing of results between field service and headquarters.

SOFTWARE VARIANT: WINGLET OEM

The full-featured version for OEMs allows creating/editing test choreographies, defining/editing pass/fail criteria, and tuning control parameters and simulations. It is suitable for OEM headquarters, R&D teams, and key users.

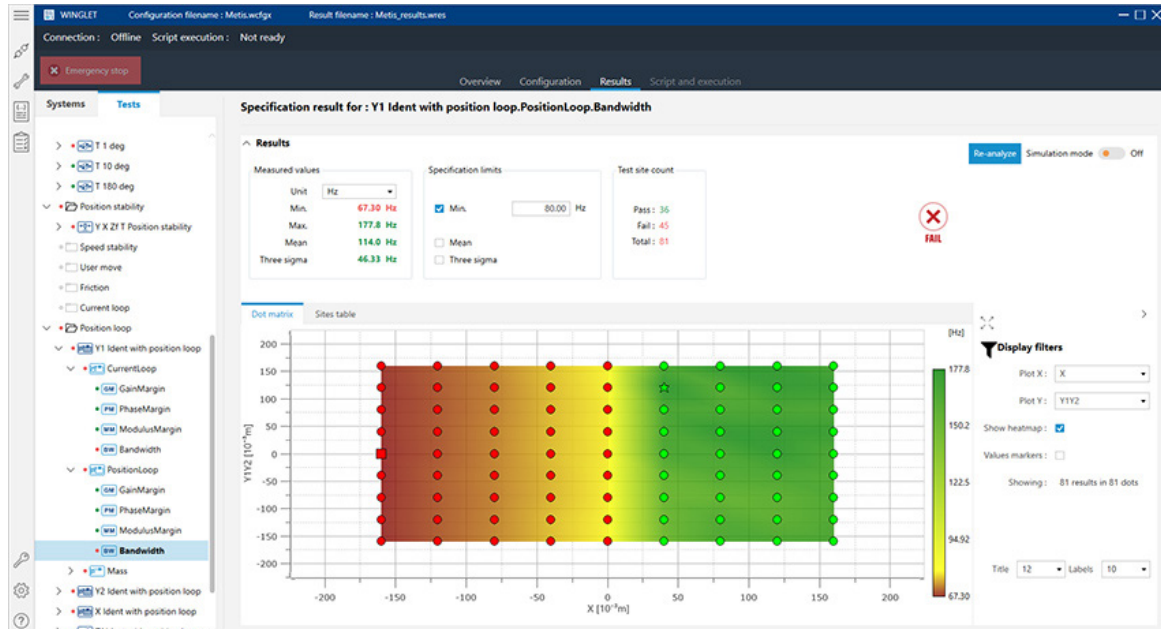
SOFTWARE VARIANT: WINGLET RUNTIME

A lighter version installed on equipment for end users allows full execution of tests and results visualization but restricts editing capabilities to prevent modifications to choreographies, criteria, or results. It is intended for local service personnel during installation, maintenance, or troubleshooting.

- PC-based software compatible with ETEL ACCURET+ / ULTIMET controllers
- Streamlines setup and qualification from R&D design to end user
- Automated testing and reporting to ensure manufacturing robustness
- Provides fast and precise machine diagnostics for improved efficiency

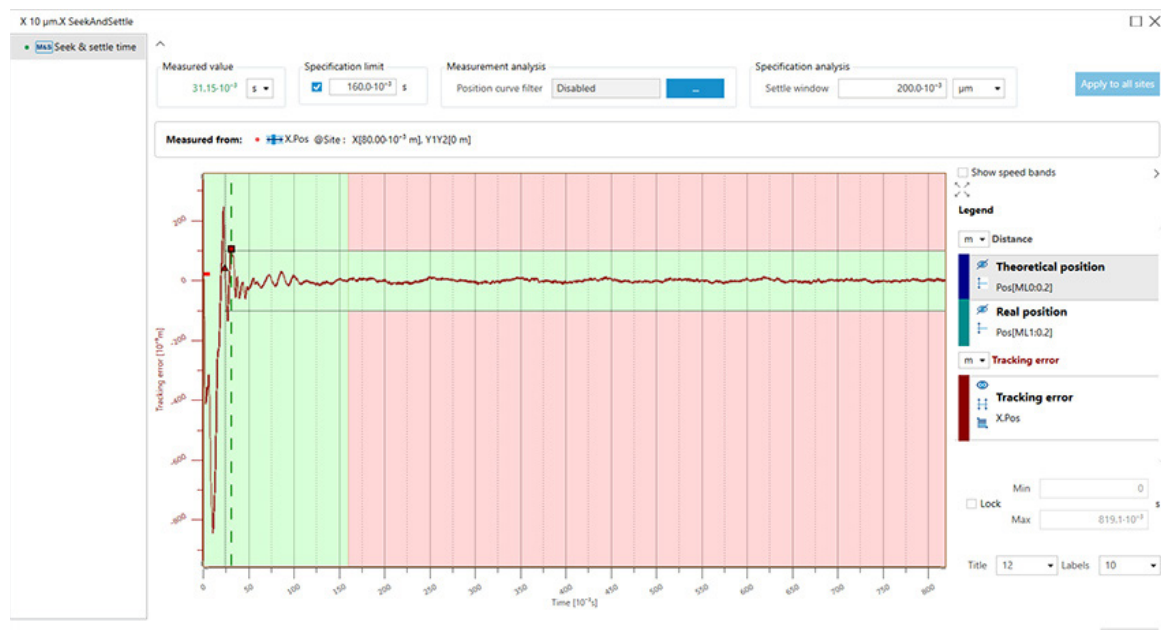
➤ **Global view – An intuitive representation of the test results over the entire system workspace allows for fast diagnostics.**

Example above: test sites heatmap pattern highlighting a problematic area.



➤ **Detailed view – each test site can be analyzed in both the time and frequency domains.**

Example above: results of a move-and-settle test with a target window.



More info



Ver. 1.1

PRECISELY. **ETEL**