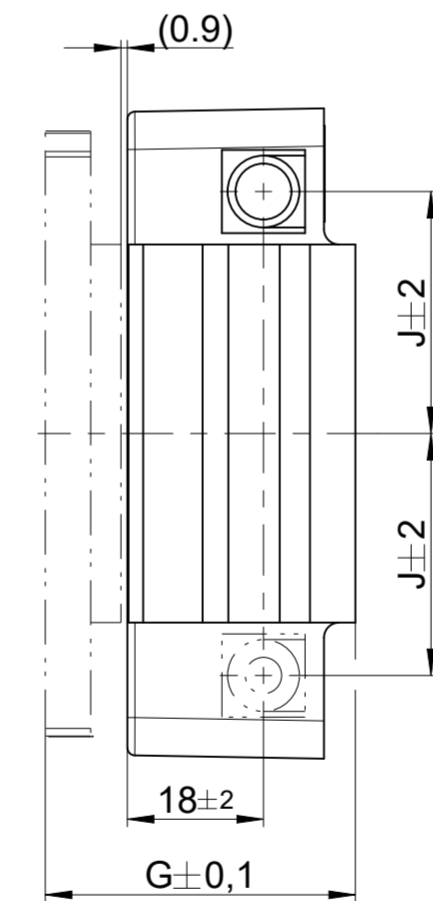
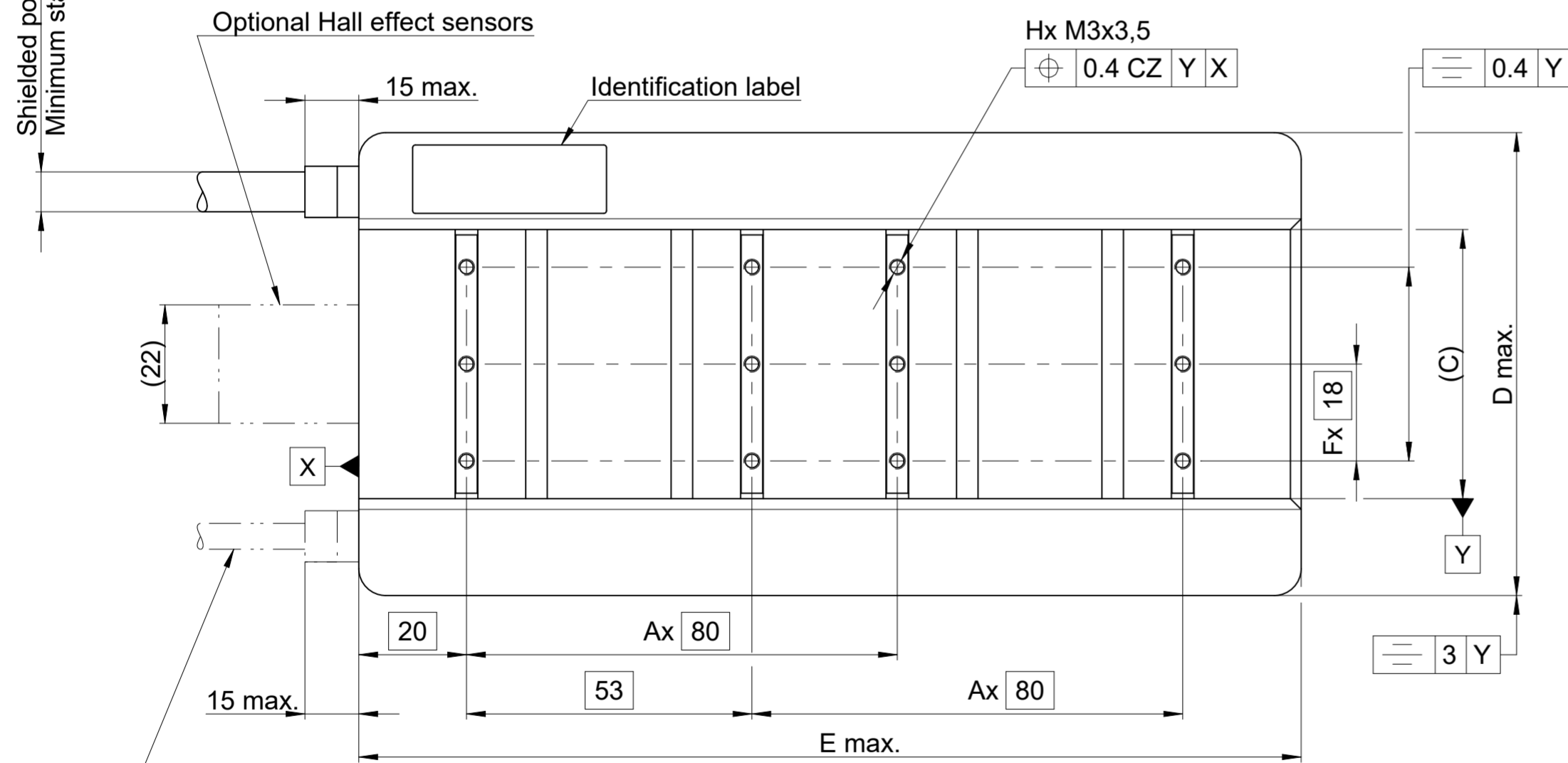
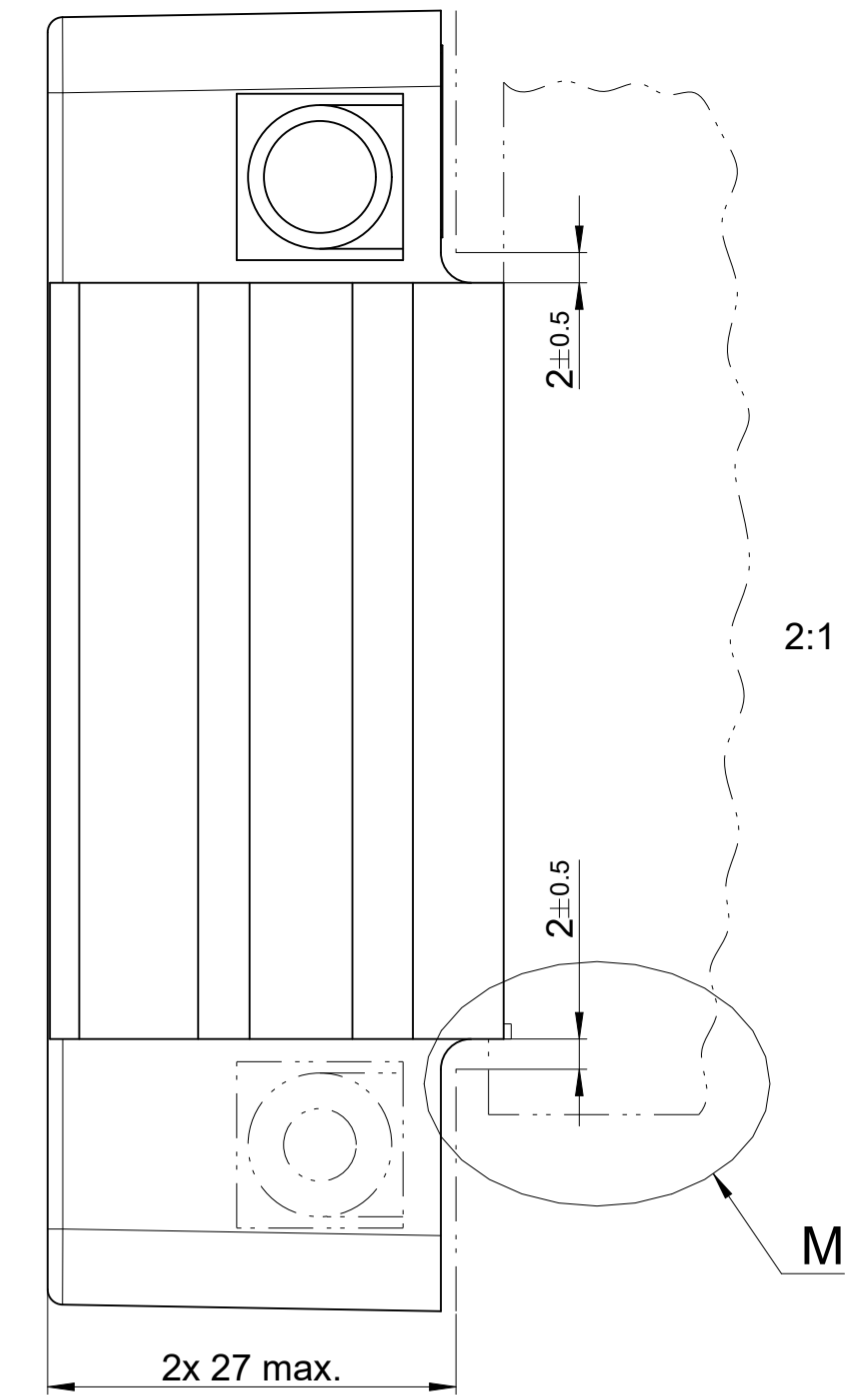
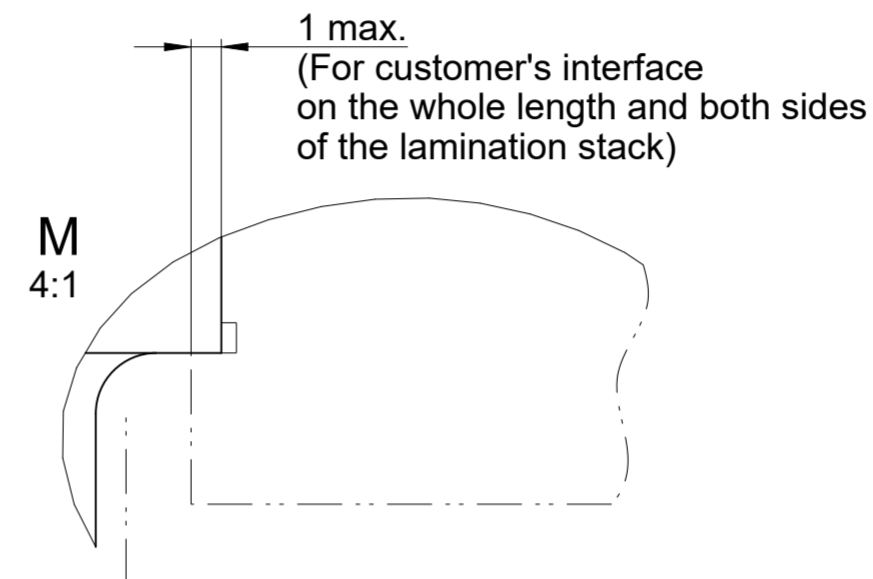
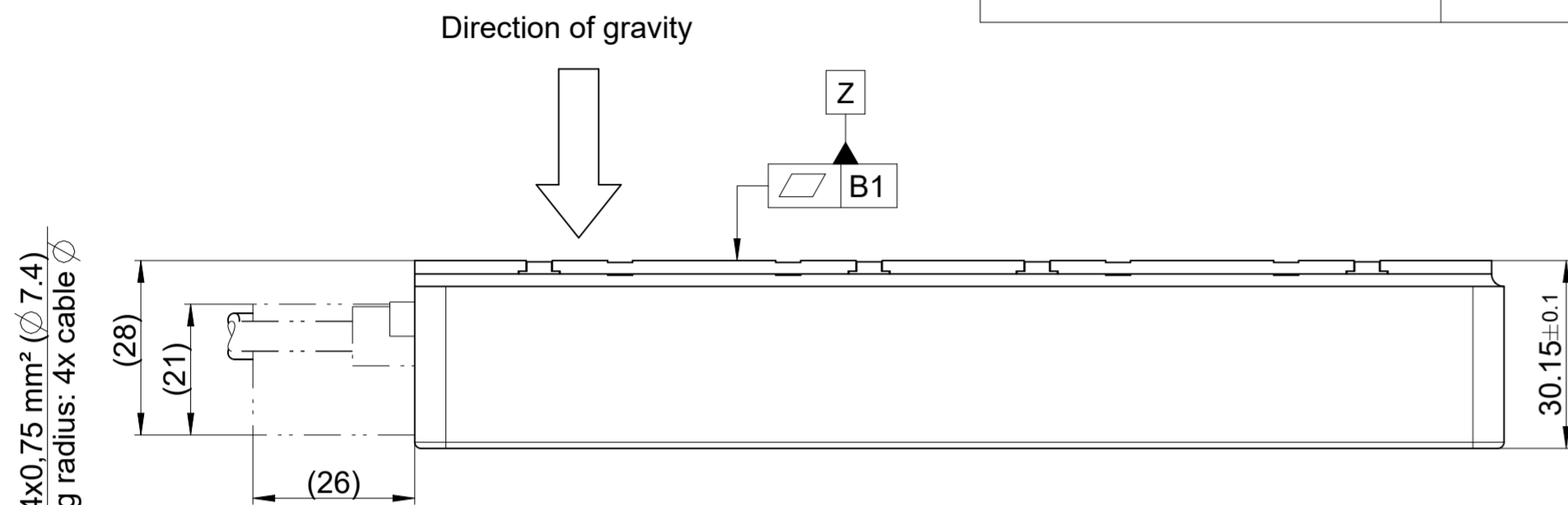
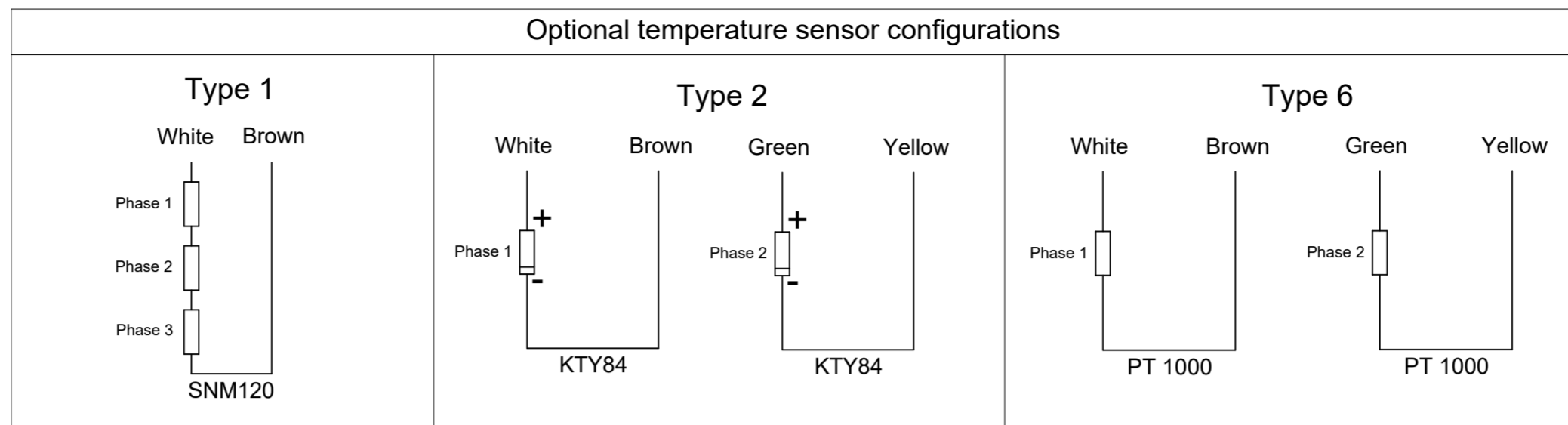


Linear Motors

LMS INTERFACE DRAWINGS

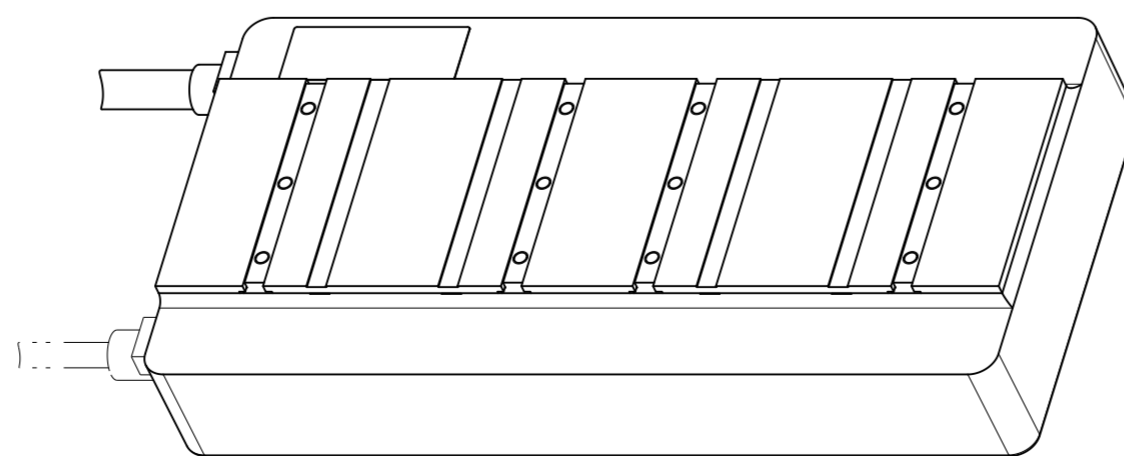
ETEL

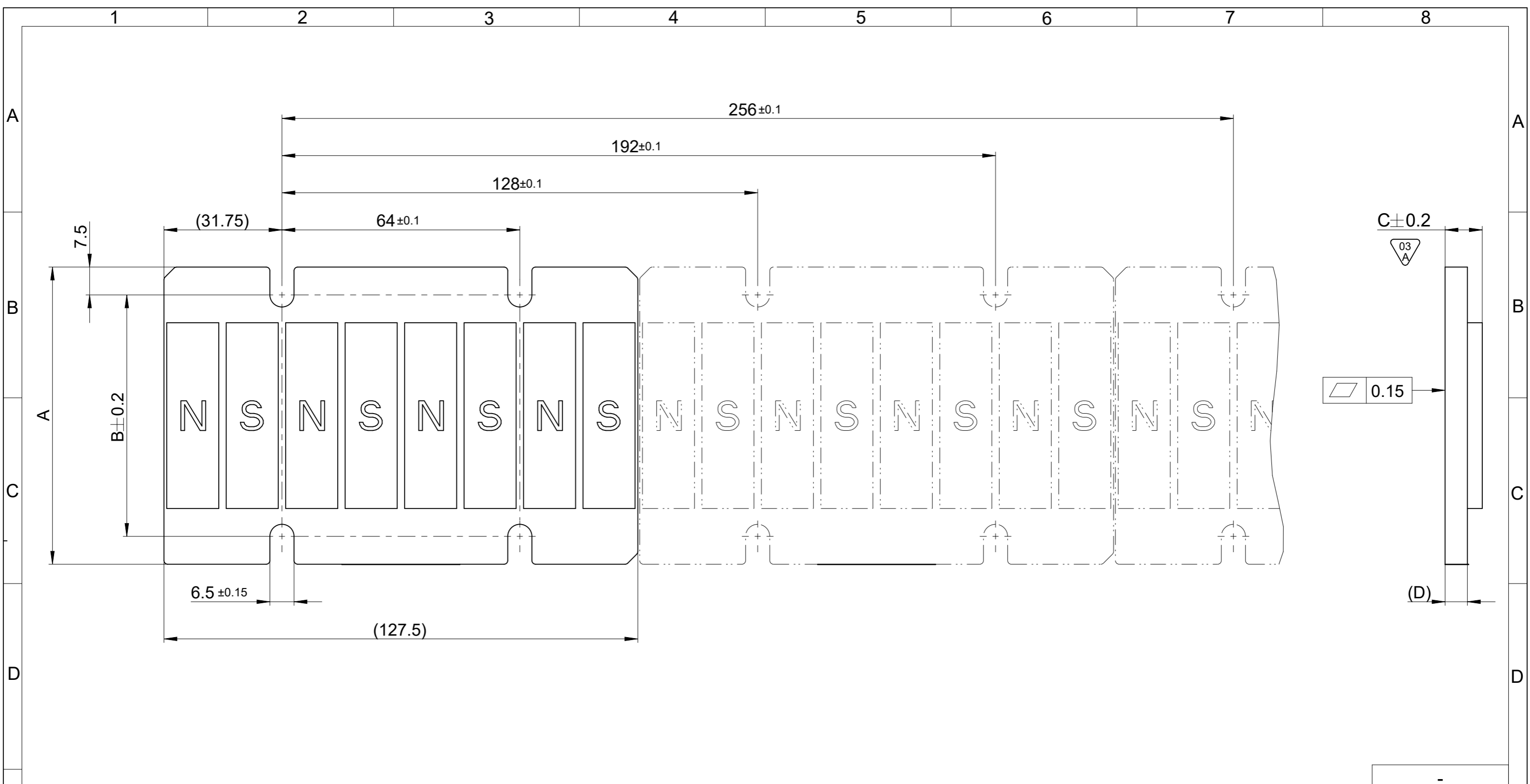


	A	B1	C	D	E	F	G	H	J
LMS05-030	0		30	66	95	1	41	4	22
LMS05-050			50	86		2	43	6	32
LMS05-070			70	106		3	43	8	42
LMS10-030	1	0.1	30	66	175	1	41	8	22
LMS10-050			50	86		2	43	12	32
LMS10-070			70	106		3	43	16	42
LMS10-100			100	136		4	45	20	57
LMS15-030	2	0.1	30	66	255	1	41	12	22
LMS15-050			50	86		2	43	18	32
LMS15-070			70	106		3	43	24	42
LMS15-100			100	136		4	45	30	57
LMS20-050	3	0.1	50	86	335	2	43	24	32
LMS20-070			70	106		3	43	32	42
LMS20-100			100	136		4	45	40	57

ISO 10579-NR
Restrained conditions for the flatness B1: the surface indicated as datum Z is fixed on a ENAW-6082 aluminium plate, thickness 25mm with H bolts M3x30 ISO 4762 quality A2-70 tightened to a torque of 1.26 N·m
For further interface plate design guidelines, please refer to the integration manual

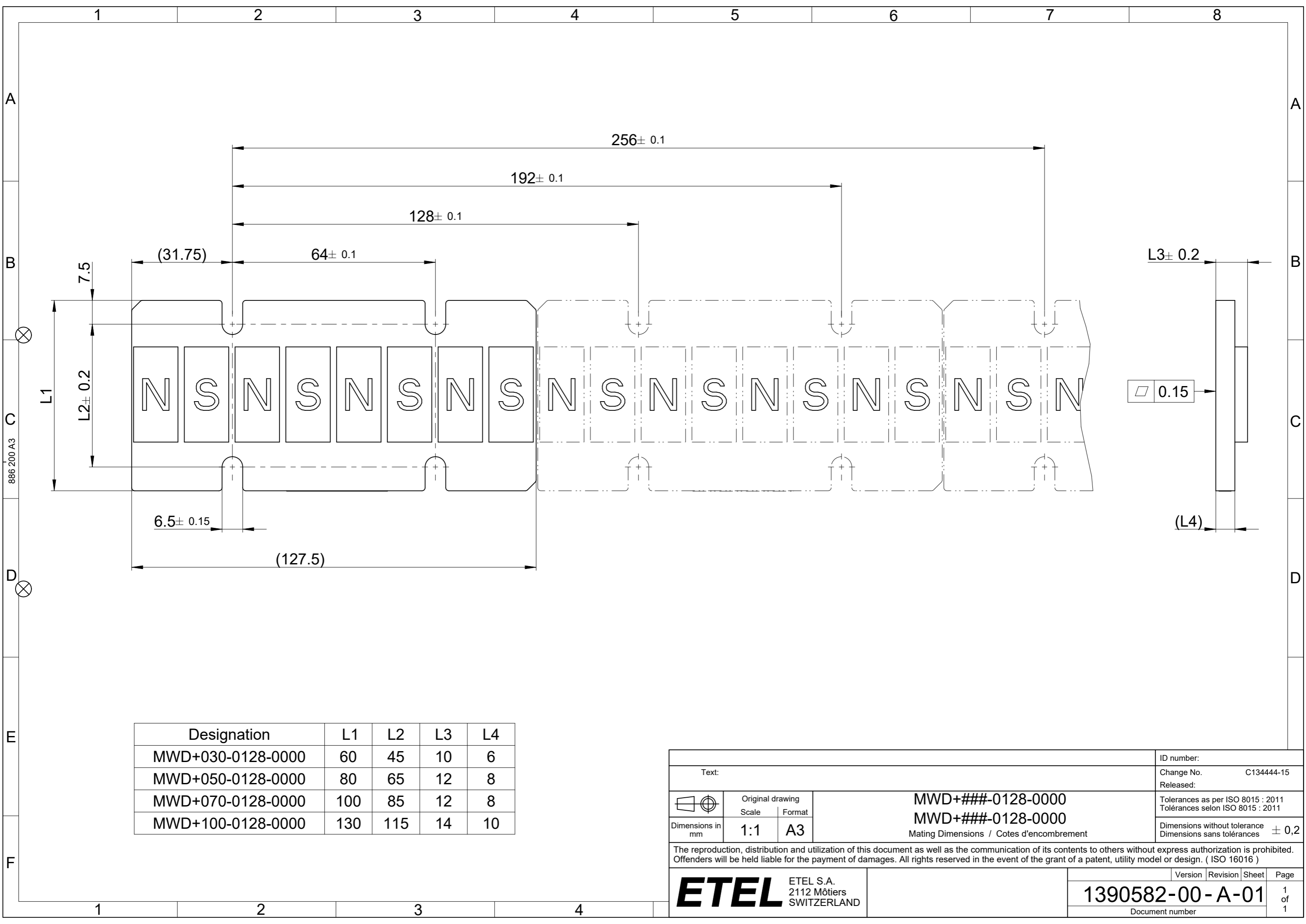
Text:			ID number
Original drawing Scale: 1:1 Format: A2			Change No. C115109-10
RoHS			Released:
Ironcore linear motor LMS##-###-3##-###			Material: Matière:
Moteur linéaire avec fer LMS##-###-3##-###			
Dimensions in mm / Cotes en mm		Mating Dimensions / Cotes d'encombrement	
Workpiece edges ISO 13715	General tolerances ISO 2768-mK	Surfaces as per ISO 1302	
Arêtes de formes selon ISO 13715	Tolérances générales ISO 2768-mK	Etats de surface selon ISO 1302	
-0.1 -0.3	+0.3 +0.0	Surface treatment: Traitement de surface:	
Tolerances as per ISO 8015 : 2011		Tolérances selon ISO 8015 : 2011	
The reproduction, distribution and utilization of this document as well as the communication of its contents to others without express authorization is prohibited. Offenders will be held liable for the payment of damages. All rights reserved in the event of the grant of a patent, utility model or design. (ISO 16016)			
ETEL ETEL S.A. 2112 Môtiers SWITZERLAND			Version/Revision/Sheet/ Page 1 of 1
1086932-06-A-01			Document number





Designation	A	B	C	D
MWD030-0128	60	45	10	6
MWD050-0128	80	65	12	8
MWD070-0128	100	85	12	8
MWD100-0128	130	115	14	10

Text:		ID number	
Original drawing Scale: 1:1 Format: A3		Change No. C095064-05 Released: 09.08.2019	
RoHS		Material: Matière:	
Dimensions in mm / Cotes en mm		Standard magnetic way MWD###-0128 Voie magnétique MWD###-0128 standard	
Workpiece edges ISO 13715 Arêtes de formes selon ISO 13715		Mating Dimensions / Cotes d'encombrement	
-0.1 +0.3 +0.0		General tolerances ISO 2768-mK Tolérances générales ISO 2768-mK	
Tolerances as per ISO 8015 : 2011 Tolérances selon ISO 8015 : 2011		Surfaces as per ISO 1302 Etats de surface selon ISO 1302	
Surface treatment: Traitement de surface:		The reproduction, distribution and utilization of this document as well as the communication of its contents to others without express authorization is prohibited. Offenders will be held liable for the payment of damages. All rights reserved in the event of the grant of a patent, utility model or design. (ISO 16016)	
 ETEL S.A. 2112 Môtiers SWITZERLAND		Version	Revision
		Sheet	Page
1090088-03-A-01		1 of 1	
Document number			



886 200 A3

Designation	L1	L2	L3	L4
MWD+030-0128-0000	60	45	10	6
MWD+050-0128-0000	80	65	12	8
MWD+070-0128-0000	100	85	12	8
MWD+100-0128-0000	130	115	14	10

Text:		ID number:	
		Change No.	C134444-15
		Released:	
	Original drawing	MWD+###-0128-0000 MWD+###-0128-0000 Mating Dimensions / Cotes d'encombrement	
	Scale		
Dimensions in mm	1:1	A3	Tolerances as per ISO 8015 : 2011 Tolérances selon ISO 8015 : 2011 Dimensions without tolerance ± 0,2 Dimensions sans tolérances

The reproduction, distribution and utilization of this document as well as the communication of its contents to others without express authorization is prohibited. Offenders will be held liable for the payment of damages. All rights reserved in the event of the grant of a patent, utility model or design. (ISO 16016)

	ETEL S.A. 2112 Môtiers SWITZERLAND	Version	Revision	Sheet	Page
		1390582-00-A-01			
		Document number			