
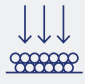


**Continuous force**  
up to 908 N



**Peak force**  
up to 3640 N



**Force density**  
allows a high  
continuous force  
level

# LMG / LMS / ILF+ / ILM+

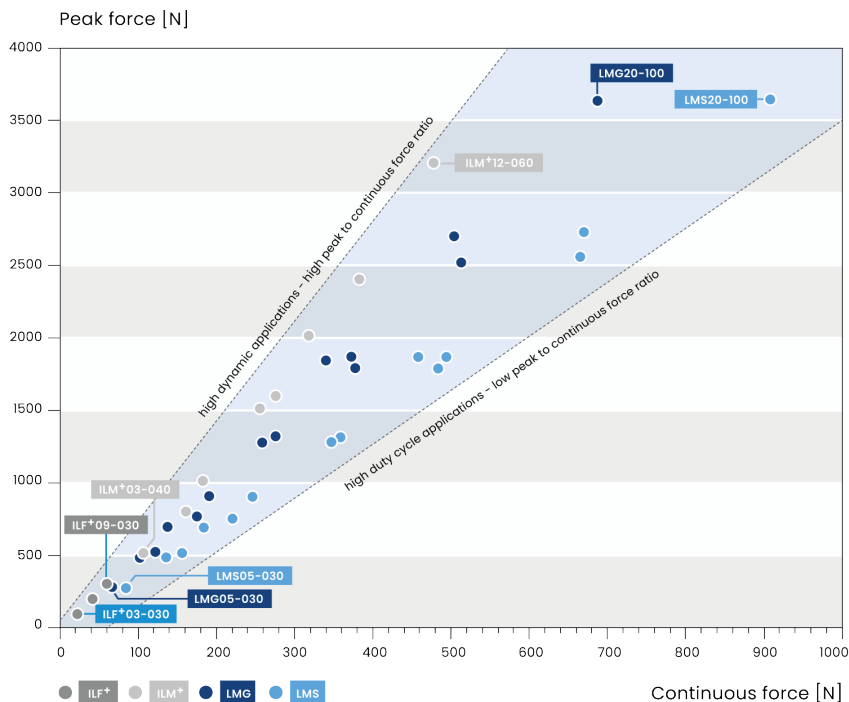
## Linear Motors

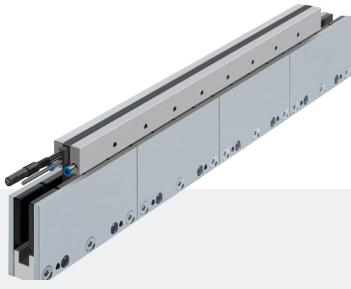
*i For machine tool applications*

**We offer the industry's most comprehensive range of standard linear motors, comprising over 40 models to meet a diverse array of requirements.**

ETEL linear motors combine low cost of ownership with easy integration and outstanding dynamic performance. By directly coupling the payload to the motor, they eliminate the need for mechanical transmission elements, which reduces wear, increases reliability, and extends lifetime while minimizing maintenance. Available in a wide range of sizes, they can be adapted to most applications: ironcore motors reduce integration volume requirements, while ironless versions are

extremely thin, offering machine builders great flexibility in positioning. Designed for performance, ironless motors are ideal for light payloads requiring high speed and acceleration, while ironcore motors deliver the force needed for more demanding applications. Together, they enable velocities of up to 15 m/s, making ETEL linear motors a versatile and powerful solution for modern machinery.





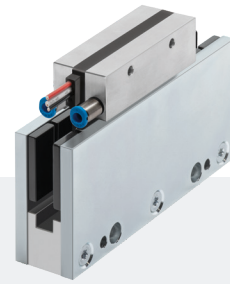
## ILM+

The ILM+ ironless linear motors represent the pinnacle of motion control excellence, offering unmatched power and precision for demanding applications. Building upon the success of the ILF+ motors, the ILM+ series combines the advantages of ironless technology with high continuous force capabilities. Ideal for mid- to high-mass scanning applications where zero attraction forces and exceptional speed stability are essential, the ILM+ motors deliver unparalleled performance.

More info



**Fc:** 478 N  
**Fp:** 3'200 N



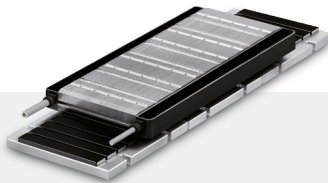
## ILF+

The ILF+ ironless linear motors cover applications demanding ultra-high dynamics and low moving masses. Designed with precision in mind, these small-sized motors offer exceptional speed stability, making them ideal for scanning applications where precise speed control is crucial. With zero force ripple and no attraction force between the glider and magnetic ways, the ILF+ motors ensure unparalleled motion accuracy.

More info



**Fc:** 69 N  
**Fp:** 297 N



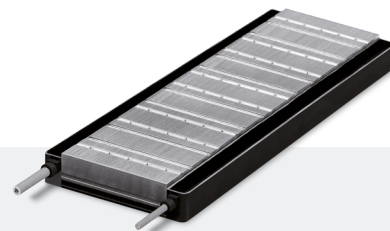
## LMG

The LMG linear motors represent a breakthrough in motion control technology, offering a compact yet powerful solution for high dynamic applications. Engineered for optimal performance, these motors boast a remarkable peak-to-continuous force ratio, making them ideal for demanding linear axis systems with mid- to low moving masses. Their lightweight design coupled with high peak force capabilities enables swift accelerations, enhancing overall system efficiency.

More info



**Fc:** 689 N  
**Fp:** 3'630 N



## LMS

The LMS linear motors represent a significant advancement in motion control technology, offering substantially higher continuous force compared to the existing LMG range. Despite this enhanced power, the LMS motors maintain a mechanical integration similar to their predecessors, making them an ideal choice for seamless machine upgrades. Engineered with versatility in mind, the LMS series bridges the gap between power and integration, catering to a wide range of applications where high power density and dynamic performance are paramount.

More info



**Fc:** 908 N  
**Fp:** 3'640 N