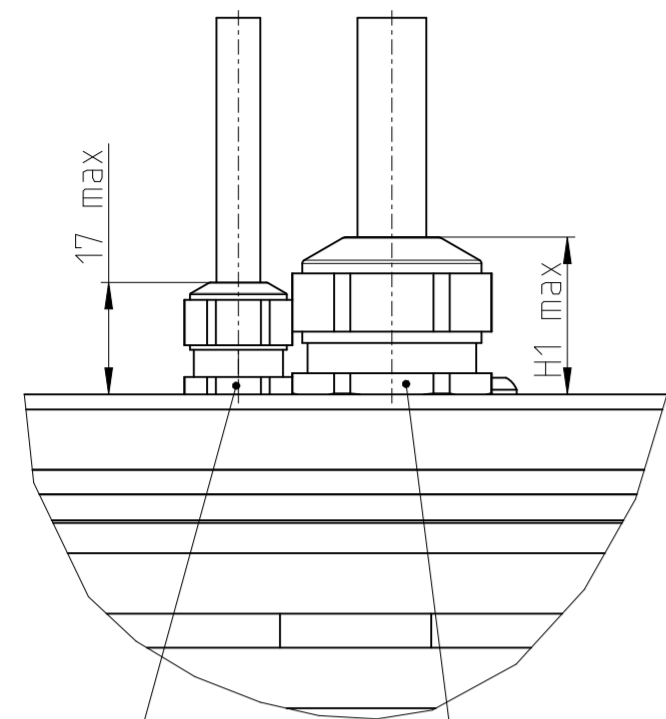


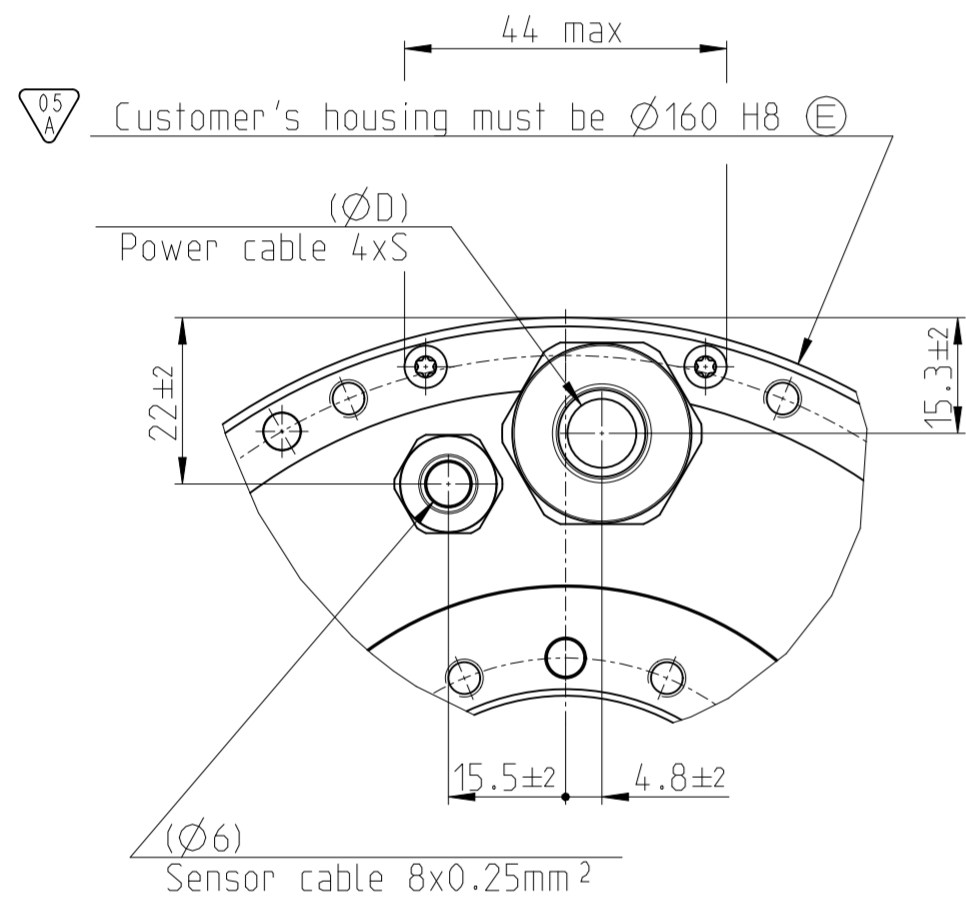
| Designation  | L1  | L2  | L3 | L4  | N1 | N2 | β     |
|--------------|-----|-----|----|-----|----|----|-------|
| TMB+0140-030 | 70  | 45  | 10 | 31  | 8  | 8  | 45°   |
| TMB+0140-050 | 90  | 65  |    | 51  |    |    |       |
| TMB+0140-070 | 110 | 85  | 15 | 71  | 16 | 15 | 22.5° |
| TMB+0140-100 | 140 | 115 |    | 101 |    |    |       |
| TMB+0140-150 | 190 | 165 |    | 151 |    |    |       |
| TMB+0140-200 | 240 | 215 |    | 202 |    |    |       |

|   |  |   |
|---|--|---|
| Text:   |  | ID number:  |
| Original drawing  |  | Change No. C075986-30   |
| Scale 1:1   |  | Released: 08.12.2021  |
| Format A1   |  | Tolerances as per ISO 8015 : 2011   |
| Dimensions in mm  |  | Tolerances selon ISO 8015 : 2011  |
|   |  | Dimensions without tolerance ± 0.2  |
|   |  | Dimensions sans tolérances ± 0.2  |
| The reproduction, distribution and utilization of this document as well as the communication of its contents to others without express authorization is prohibited. Offenders will be held liable for the payment of damages. All rights reserved in the event of the grant of a patent, utility model or design. (ISO 18015) |  |   |
| <b>ETEL</b> ETEL S.A.<br>2112 Möllers<br>SWITZERLAND  |  | Version   Revision   Sheet   Page<br><b>1175001-05-A-01</b><br>Document number 1 of 2 |

Type 1

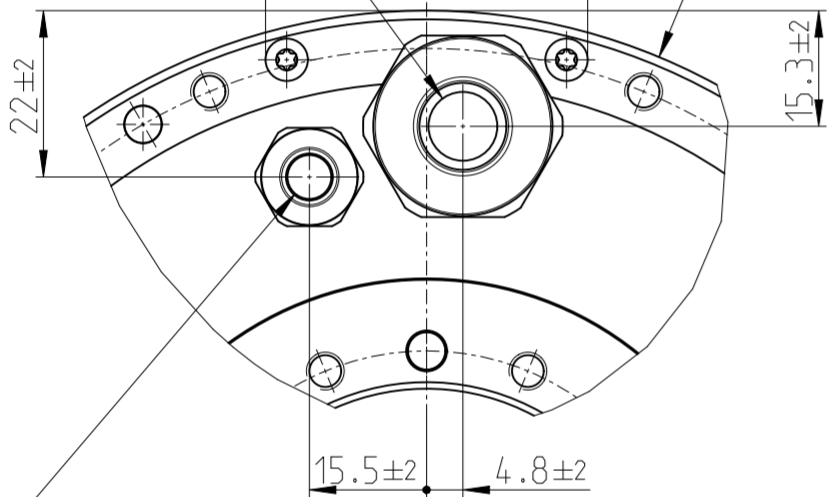


Wrench size: 13mm      Wrench size: SWmm

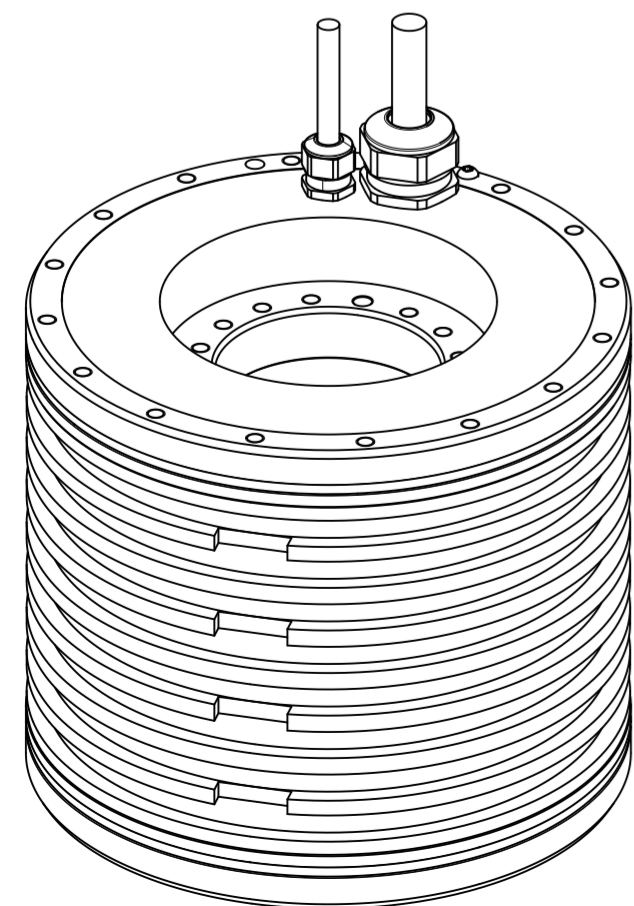


Customer's housing must be  $\varnothing 160$  H8 (E)

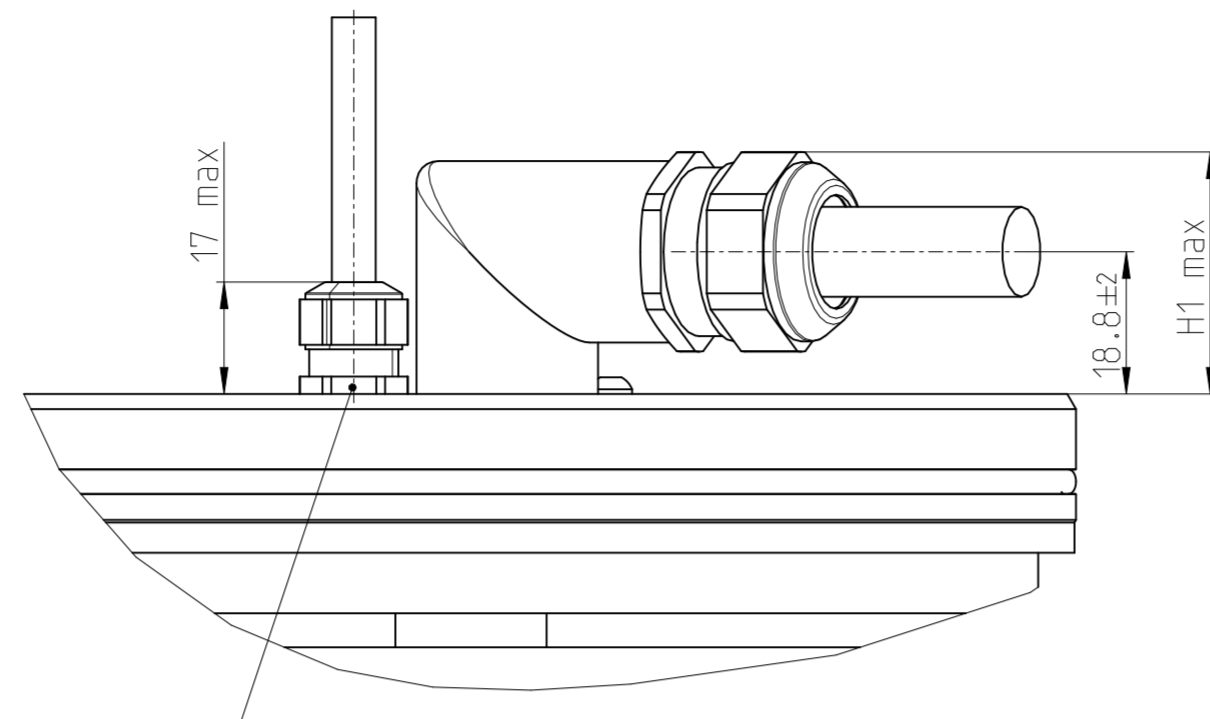
Power cable 4xS



Sensor cable 8x0.25mm<sup>2</sup>

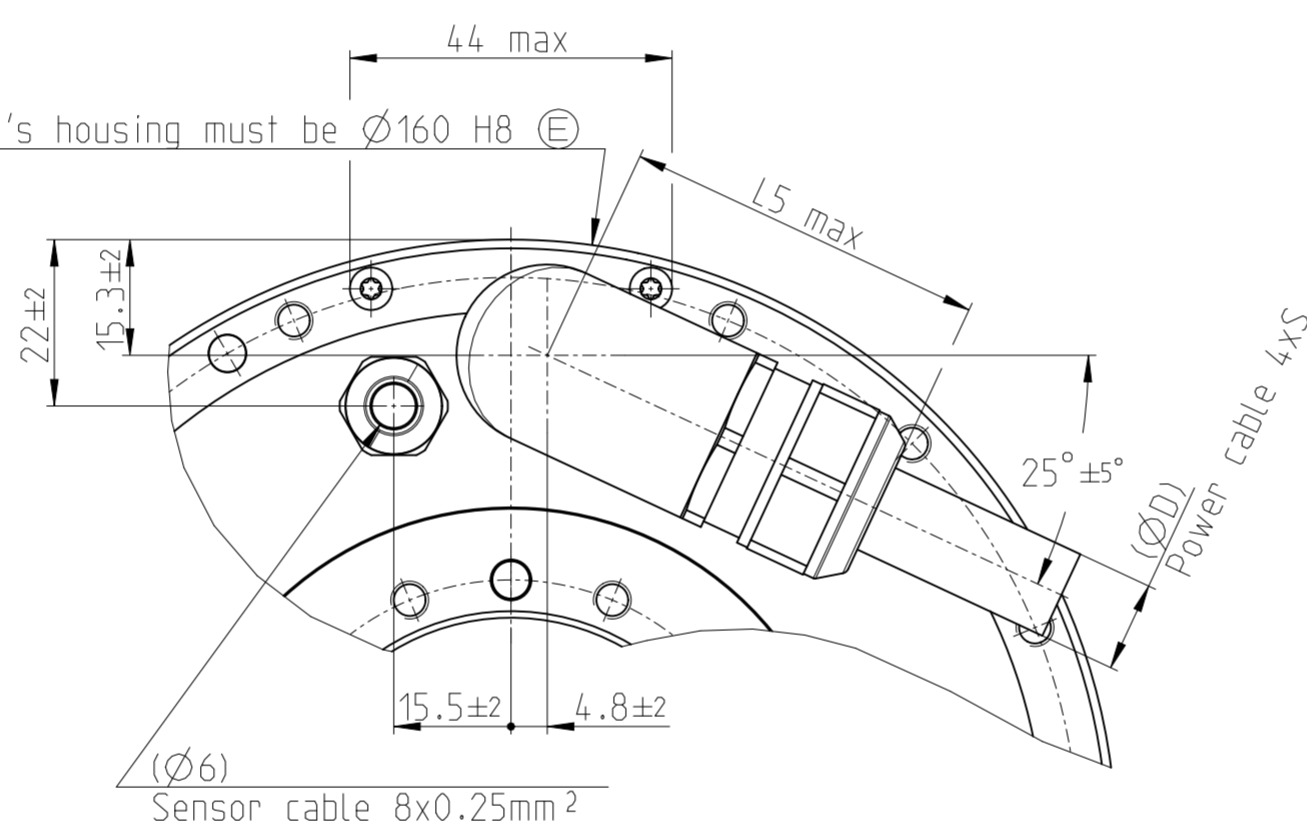


Type 2

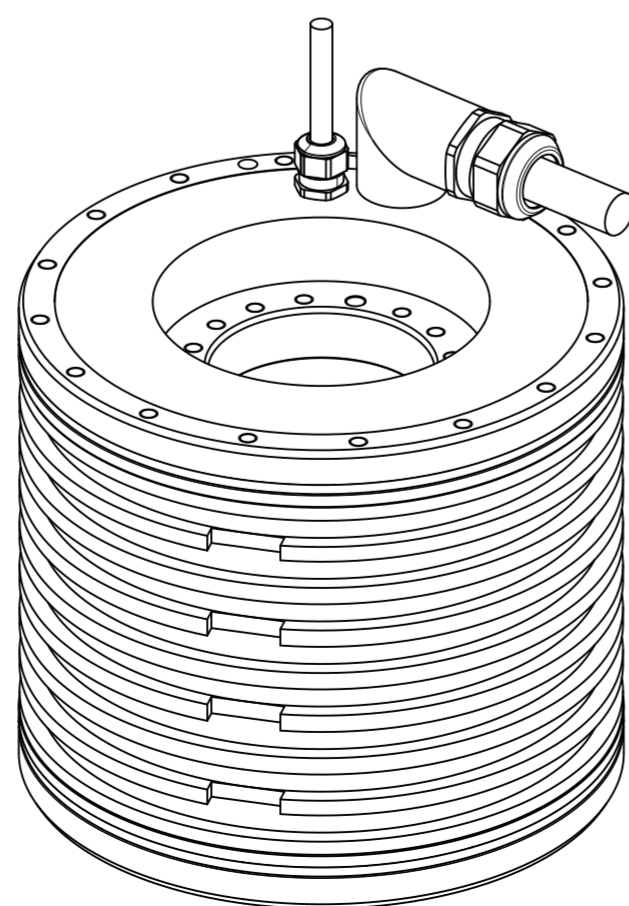


Wrench size: 13mm

Customer's housing must be  $\varnothing 160$  H8 (E)

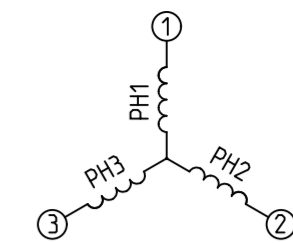


Sensor cable 8x0.25mm<sup>2</sup>

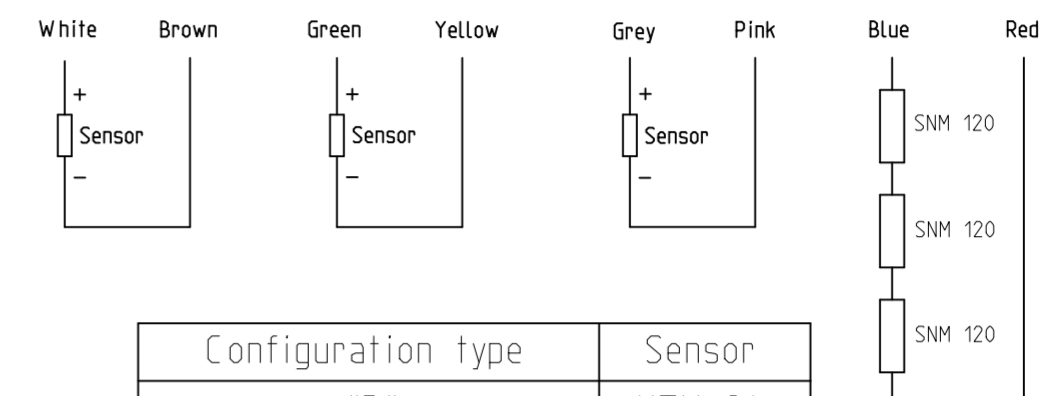


Power cable connection

Phase 1 = wire 1  
Phase 2 = wire 2  
Phase 3 = wire 3  
PE = yellow/green wire



Sensor cable connection: "P" or "T" configuration



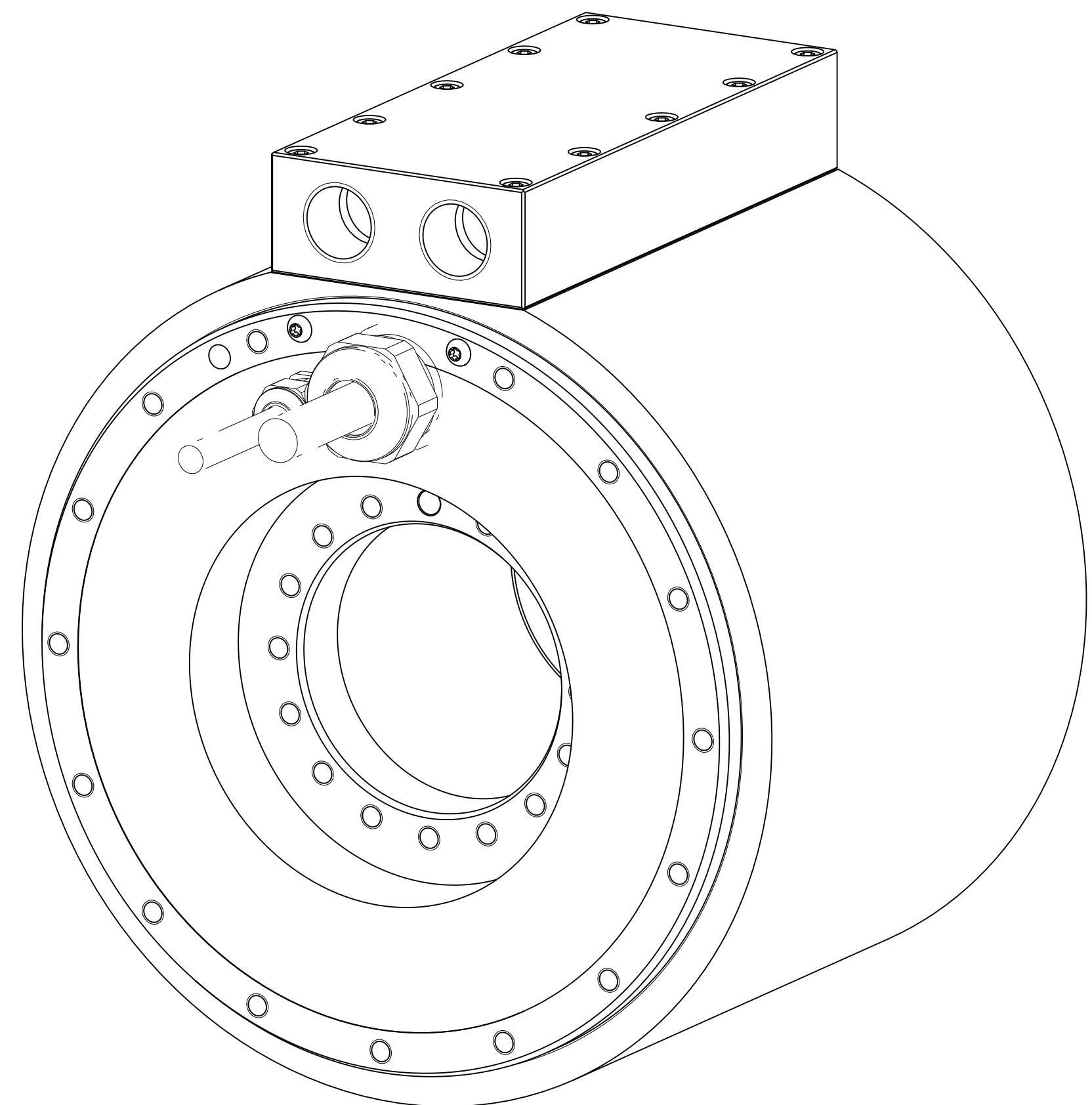
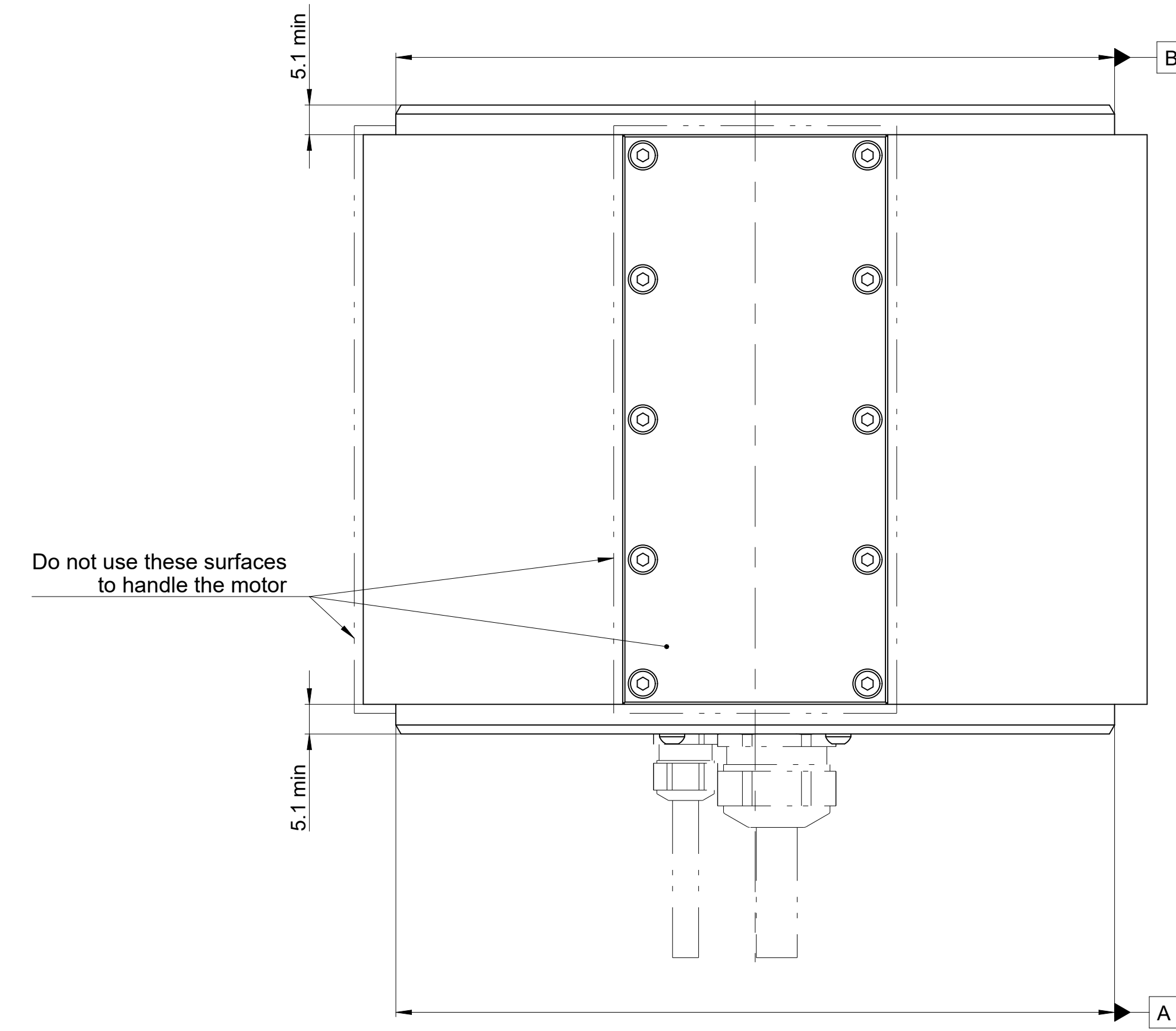
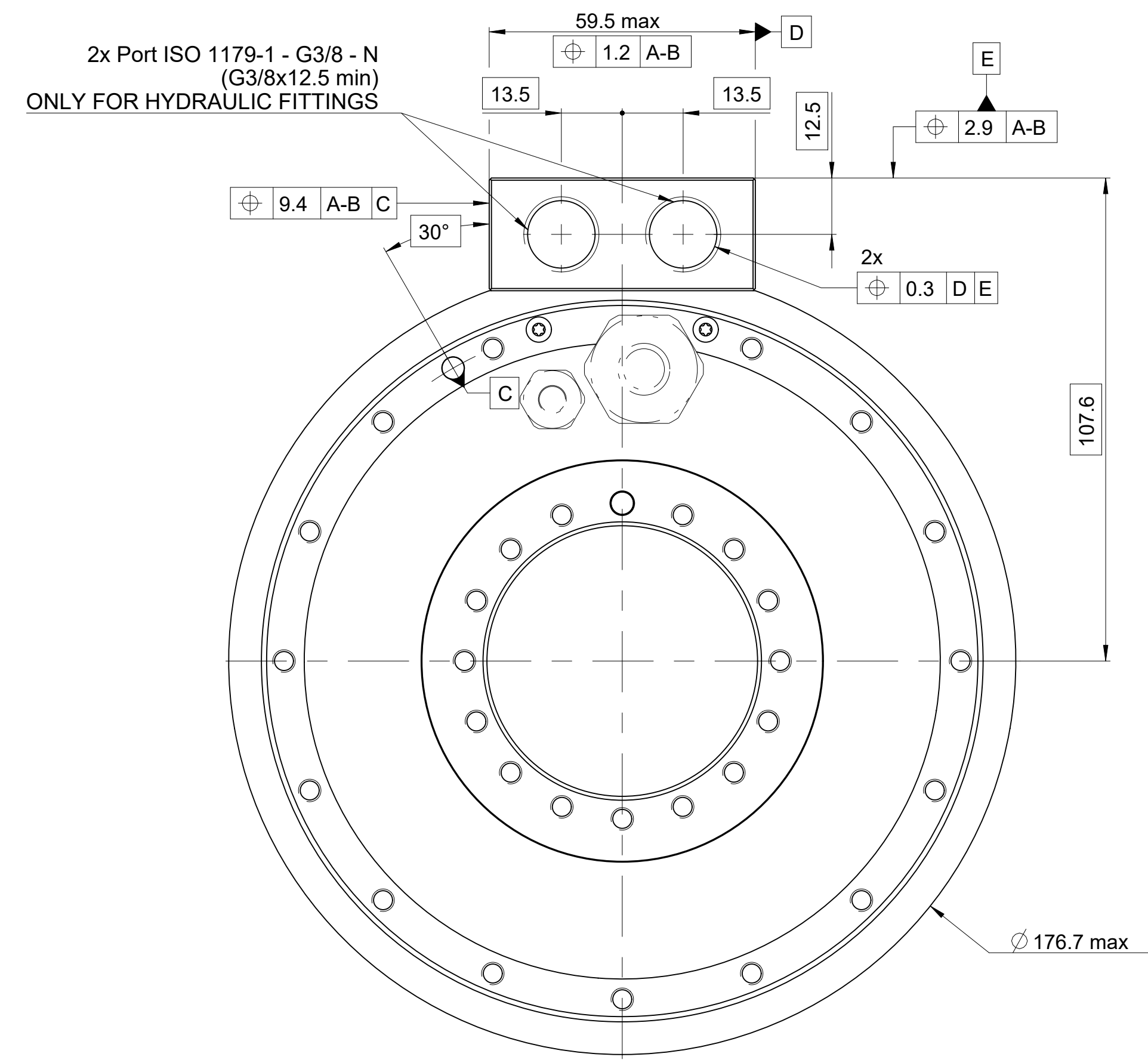
| Configuration type | Sensor  |
|--------------------|---------|
| "P"                | KTY 84  |
| "T"                | PT 1000 |

| Motor family   | 0140    | 0210    | 0290    |
|----------------|---------|---------|---------|
|                | 0175    |         | 0360    |
| Connection     | 0291    | 0450    | 0530    |
|                |         | 0760    | 0990    |
|                |         | 1221    |         |
|                |         |         |         |
| White - Brown  | Phase 1 | Phase 3 | Phase 2 |
| Green - Yellow | Phase 3 | Phase 2 | Phase 1 |
| Grey - Pink    | Phase 2 | Phase 1 | Phase 3 |

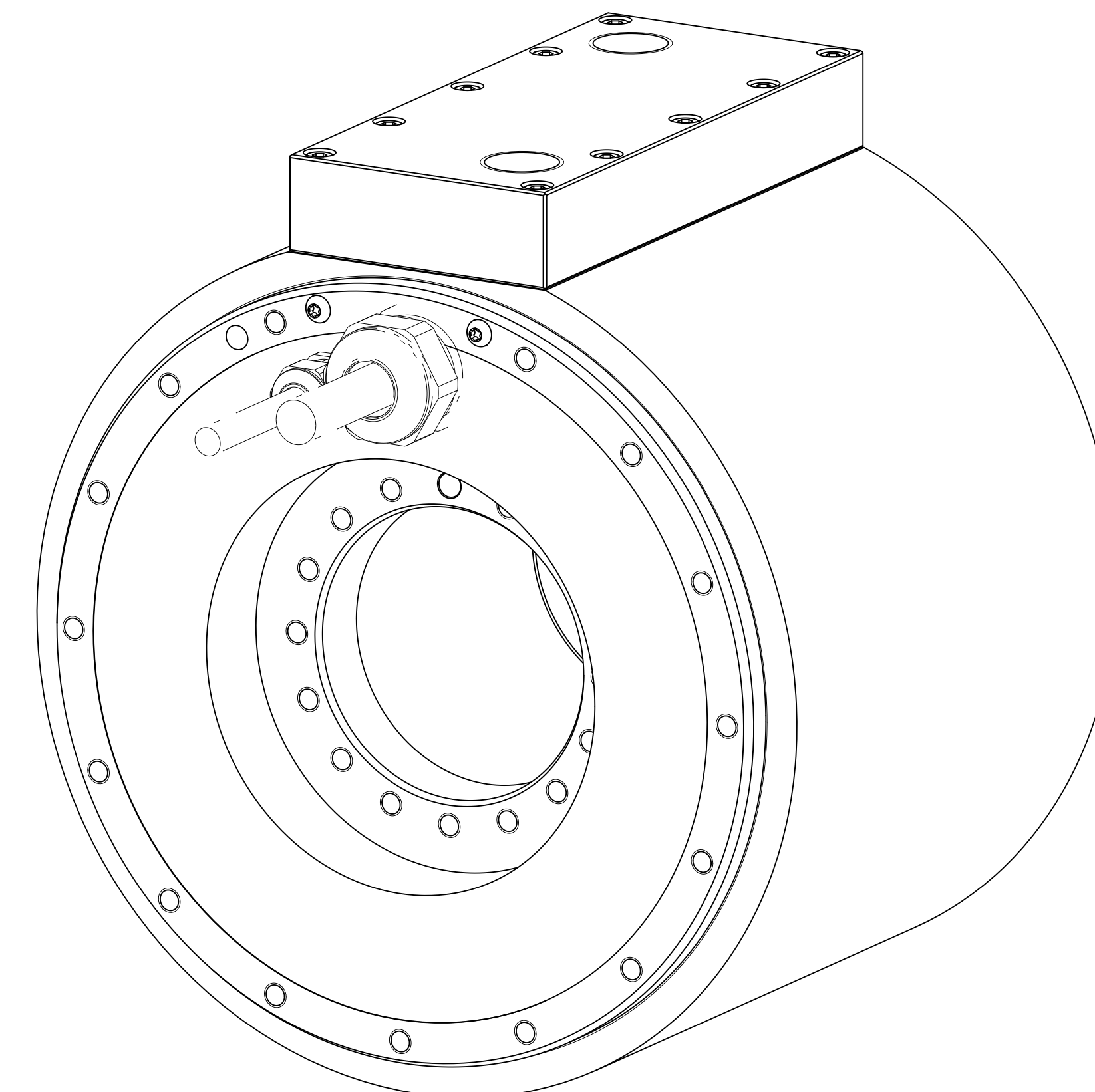
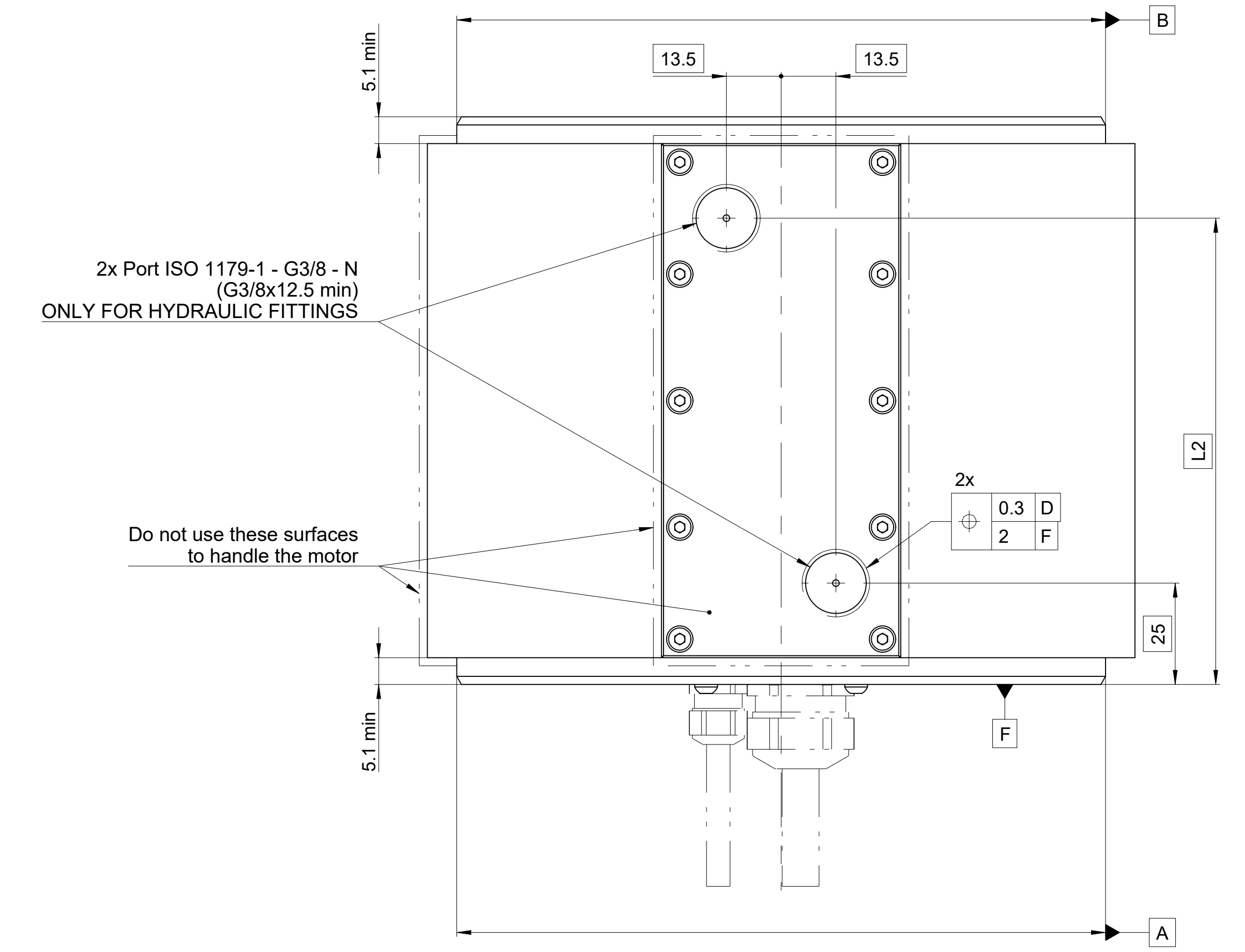
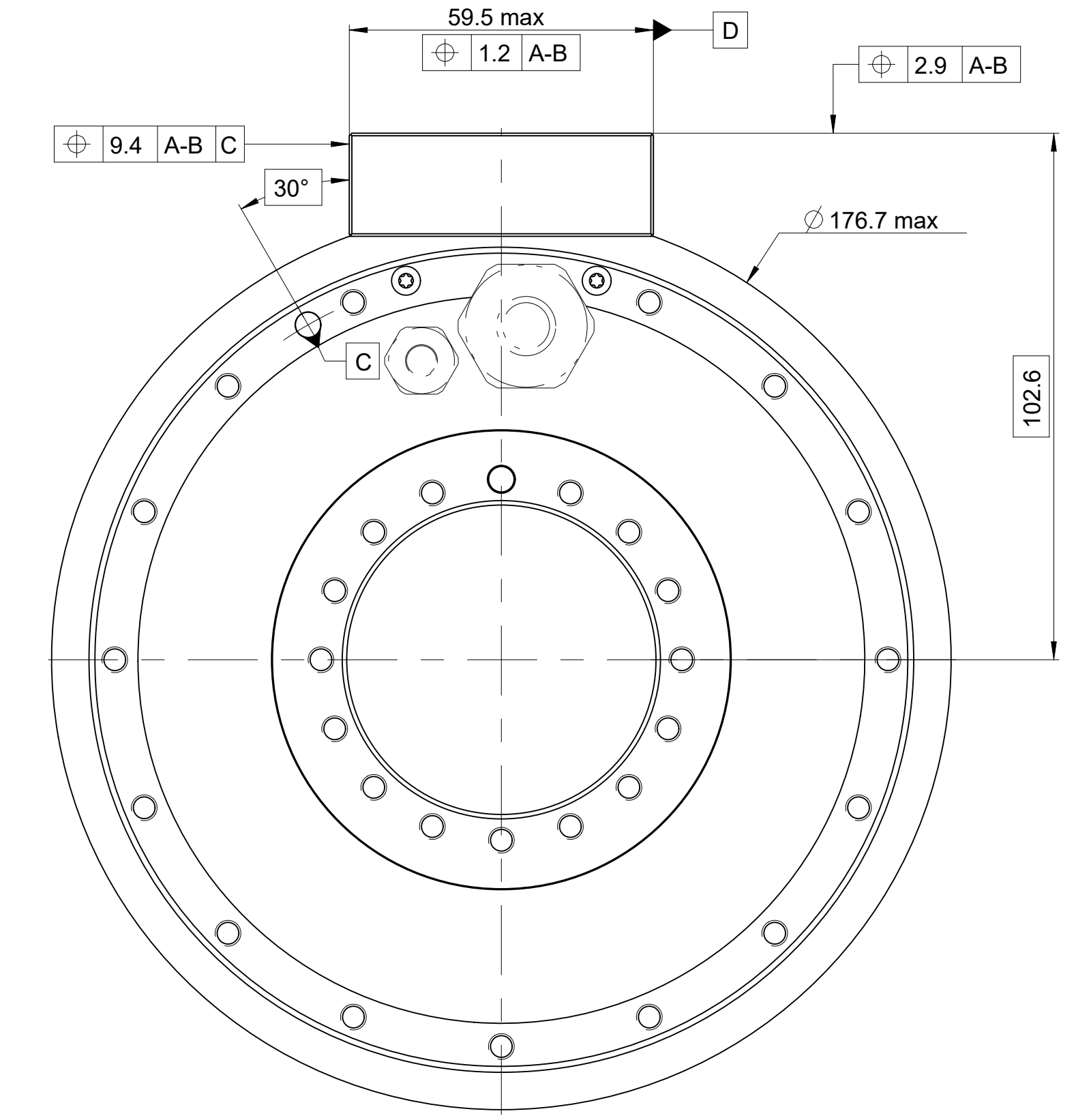
| Designation        | Output type | S= Wire section    | L5   | H1   | D    | SW   | Bending radius  |
|--------------------|-------------|--------------------|------|------|------|------|---|
| [-]                | [-]         | [mm <sup>2</sup> ] | [mm] | [mm] | [mm] | [mm] | [mm]  |
| TMB+0140-###-RA#S# | Type 1      | 1.5                | -    | 26   | 9.1  | 24   | Static bending radius for :<br>- sensor cable = 30<br>- power cable = 4x ØD |
| TMB+0140-###-RA#E# | Type 2      |                    | 51.5 | 34.5 |      |      |   |
| TMB+0140-###-SA#S# | Type 1      |                    | -    | 26   |      |      |   |
| TMB+0140-###-SA#E# | Type 2      |                    | 51.5 | 34.5 |      |      |   |
| TMB+0140-###-SB#S# | Type 1      |                    | -    | 26   |      |      |   |
| TMB+0140-###-SB#E# | Type 2      |                    | 51.5 | 34.5 |      |      |   |
| TMB+0140-###-TA#S# | Type 1      | 4                  | -    | 26   | 11.9 |      |   |
| TMB+0140-###-TA#E# | Type 2      |                    | 51.5 | 34.5 |      |      |   |
| TMB+0140-###-UB#S# | Type 1      | -                  | 28   | 11.9 |      |      |   |
| TMB+0140-###-UB#E# | Type 2      | 53.5               | 34.5 |      |      |      |   |

|   |  |   |  |
|---|--|---|--|
| Text:   |  | ID number:  |  |
| Change No. C075986-30   |  | Released: 08.12.2021  |  |
| Original drawing  |  | TMB+0140-###-#####-O#-AA0   |  |
| Scale: 1:1  |  | TMB+0140-###-#####-O#-AA0   |  |
| Format: A2  |  | Mating Dimensions / Cotes d'encombrement                              |  |
| Dimensions in mm  |  | Tolerances as per ISO 8015 : 2011<br>Tolérances selon ISO 8015 : 2011 |  |
| The reproduction, distribution and utilization of this document as well as the communication of its contents to others without express authorization is prohibited. Offenders will be held liable for the payment of damages. All rights reserved in the event of the grant of a patent, utility model or design. (ISO 16016) |  | Dimensions without tolerance ± 0,2<br>Dimensions sans tolérances      |  |
| ETEL ETEL S.A. 2112 Môtiers SWITZERLAND   |  | Version   Revision   Sheet   Page                                     |  |
|   |  | 1175001-05-A-01   |  |
|   |  | Document number   |  |

TMB+0140-###-#####-A#-AA0  
 (Annex to interface drawing 1175001: please check for motor and cable output information)



TMB+0140-###-#####-R#-AA0  
 (Annex to interface drawing 1175001: please check for motor and cable output information)



| Designation  | L2  |
|--------------|-----|
| TMB+0140-030 | 45  |
| TMB+0140-050 | 65  |
| TMB+0140-070 | 85  |
| TMB+0140-100 | 115 |
| TMB+0140-150 | 165 |
| TMB+0140-200 | 215 |