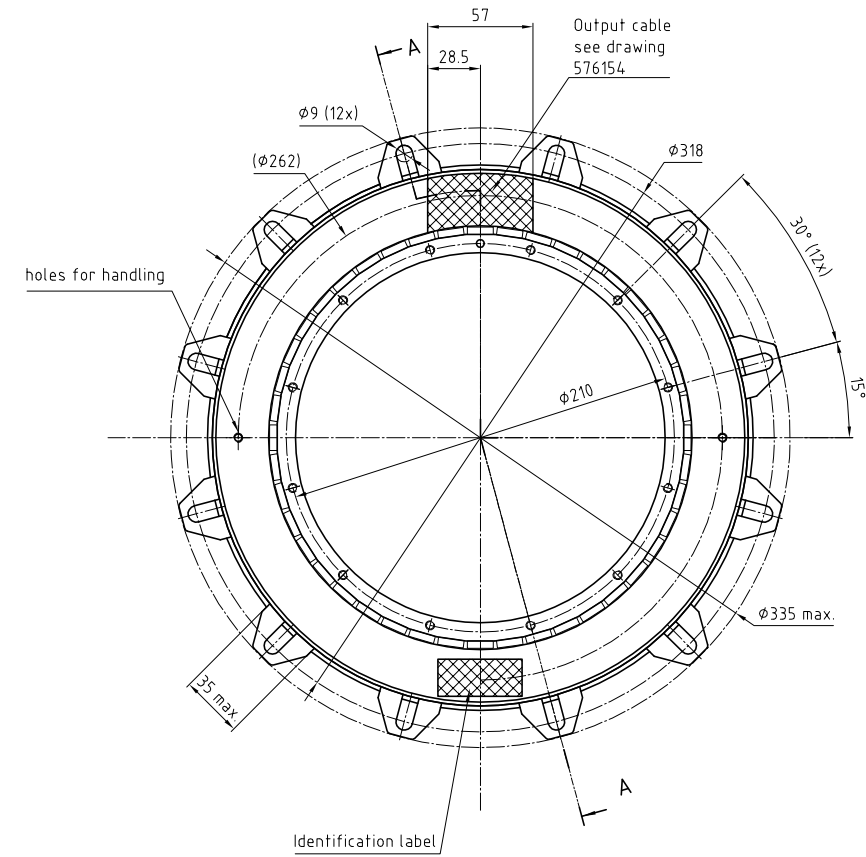
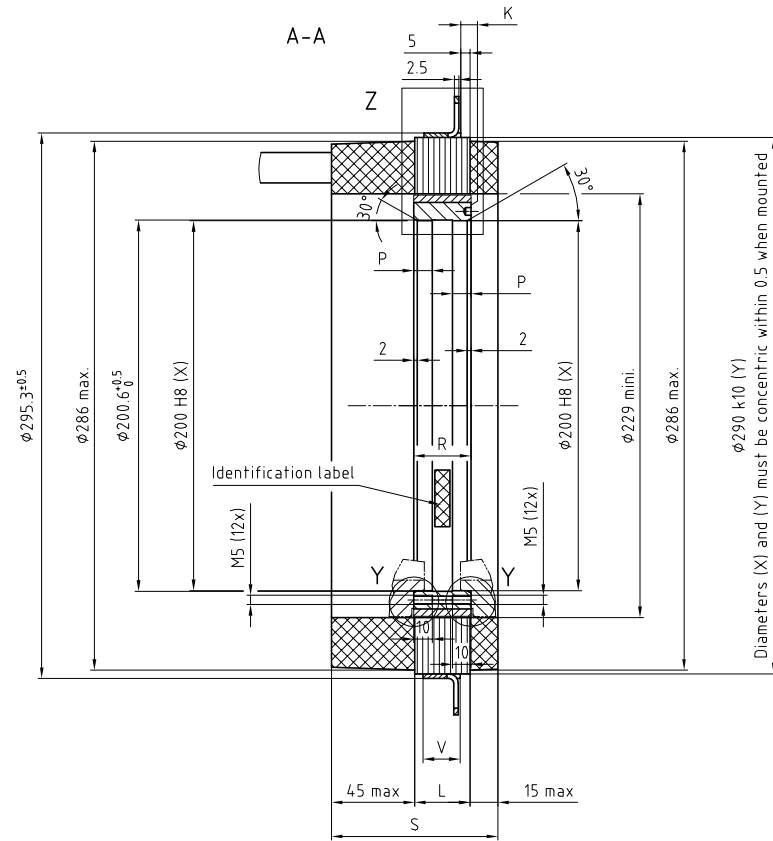
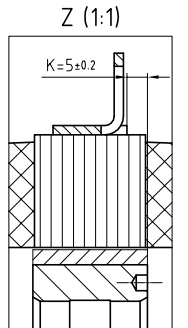


TML0291-###-3###-###
Lug at the opposite side of output cables

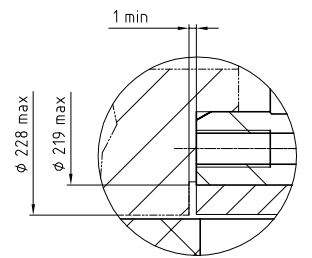


Mounting condition



Detail: Y
Magnets safety clearance

Y (2:1)

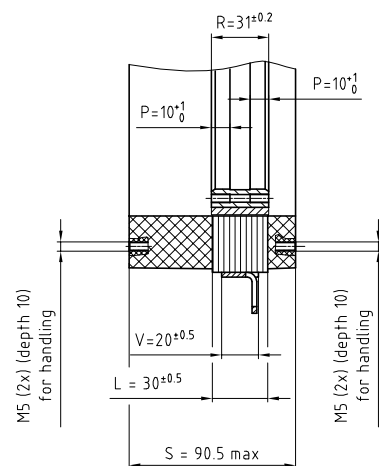


Power cable connection

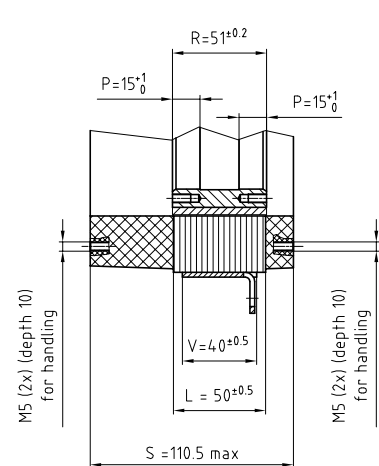
- Phase 1 = Wire 1
- Phase 2 = Wire 2
- Phase 3 = Wire 3
- Ground = Wire yellow-Green
- Neutral = Wire 5 or Br1 or White
- Not connected = Wire 6 or Br2 or Black

For temperature sensor configuration, see Handbook

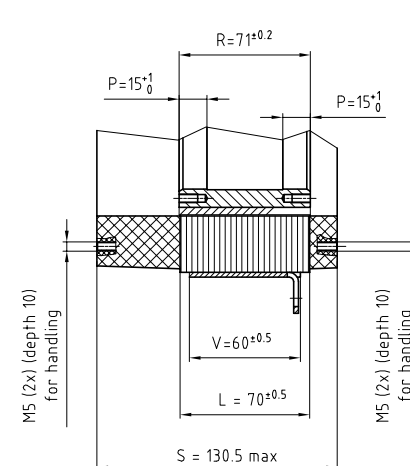
TML0291-030



TML0291-050



TML0291-070

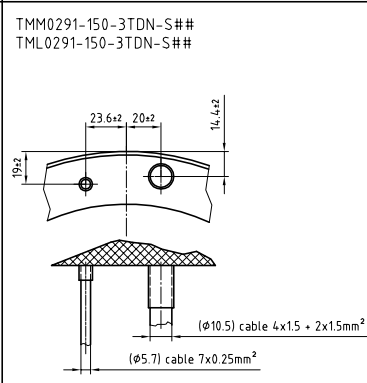
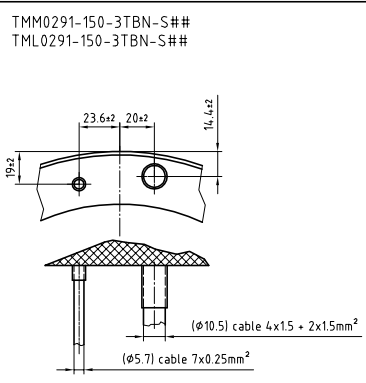
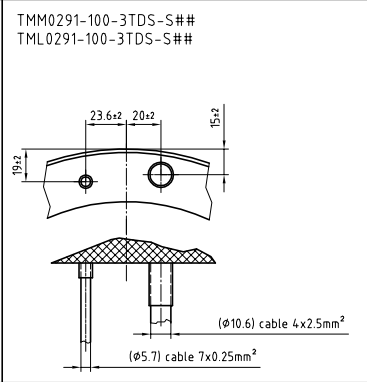
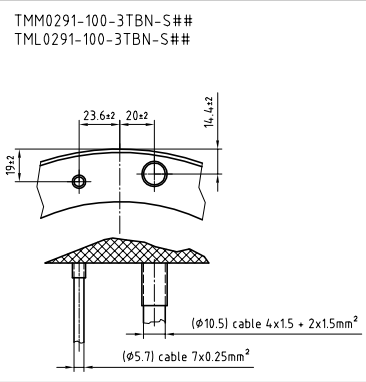
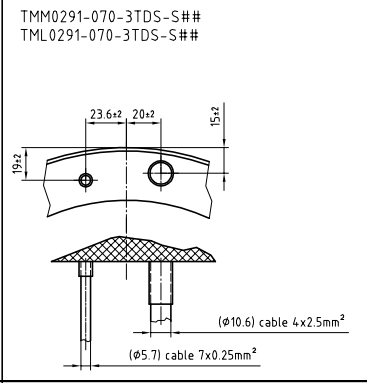
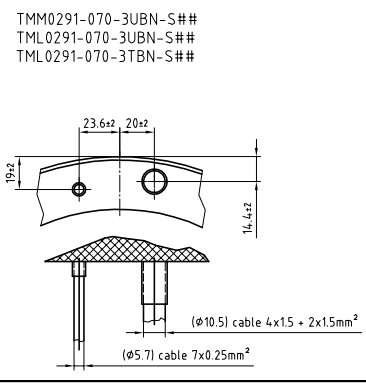
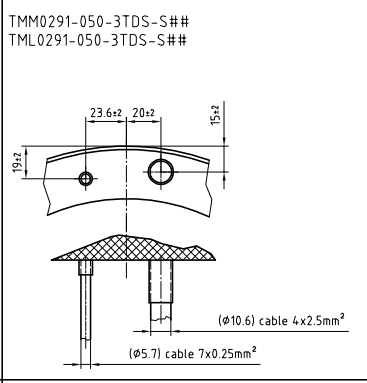
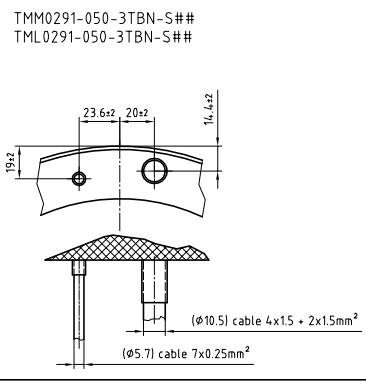
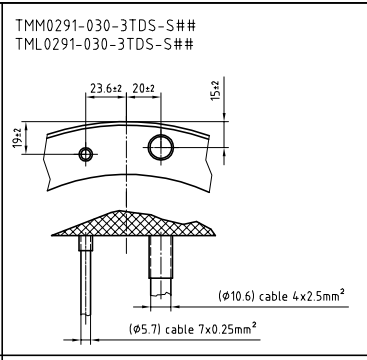
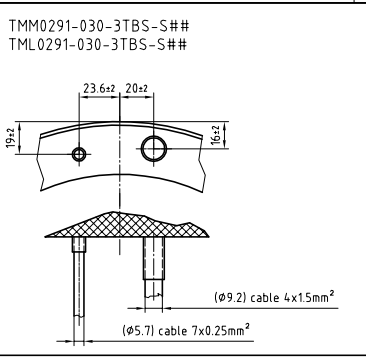


ECO N°	Nom	Date	Description
C90258-22	GRO	05.06.2016	
Matière: -			
Principe de tolérancement de base ISO 8015 et tolérance générale selon ISO 2768-mK			
Renarque: -			
Annexe: -			
Arêtes de formes ISO 13715			
Torque motor TML0291-030 / 050 / 070			
Interface drawing			
Autheur: Vérificateur: Libérateur:			
S. Iervolino			
25.10.05			
Echelle: 1:2			
Ancien n°: 0516m-14.0-02d Version: Revision: Feuille: Page			
576156 - 04 - A - 01 1/1			

Dimension nominale	Linéaire	Rayon	Châtré
0.5 - 3	± 0.1	± 0.2	
3 - 6	± 0.1	± 0.5	
6 - 30	± 0.2	± 1	
30 - 120	± 0.3	± 2	
120 - 400	± 0.5	± 4	
400 - 1000	± 0.8	± 8	
1000 - 2000	± 1.2	± 12	

Dimension nominale	Linéaire	Rayon	Châtré
0.5 - 10	0.05	0.4	0.6
10 - 30	0.1	0.4	0.6
30 - 100	0.2	0.4	0.6
100 - 300	0.4	0.6	0.6
300 - 1000	0.6	0.8	0.8
1000 - 3000	0.8	1	1

Equivalence rugosité	Ra μm	Classe
50	N12	
25	N10	
12.5	N8	
6.3	N6	
3.2	N4	
1.6	N2	
0.8	N1	
0.4	N0	
0.2	N0	
0.1	N0	
0.05	N0	
0.025	N0	



FSM N° C064306-S	Non	Date 05.10.17	Description: Elbowed output cable removed	
Matière:				Équivalence rugosité
Remarque:				50 µm Classe
Annexe:				50 25 0.5 6.3 3.2 1.6 0.8 0.4 0.2 0.1 0.05 0.025
Arêtes de formes ISO 9315		Torque motor TMM & TML0291 cables outputs		Auteur
1x3		S. Bernini		Vérificateur
		22.09.2005		Libérateur
Meilleur coupleur pour TMM & TML0291 sorties de câbles		Accessoir. 05.16mm-14.0-01		
ETEL S.A. CH-2700 Nyon SWITZERLAND Ces plans sont notre propriété. Ils ne doivent être, sans notre autorisation écrite, ni copiés, ni reproduits, ni communiqués. Tous droits réservés par le présent document à ETEL S.A.		Projection	Format	Echelle
		1	A1	576154 -06- A-01
		Version / Revision / Feuille / Page / / / /		