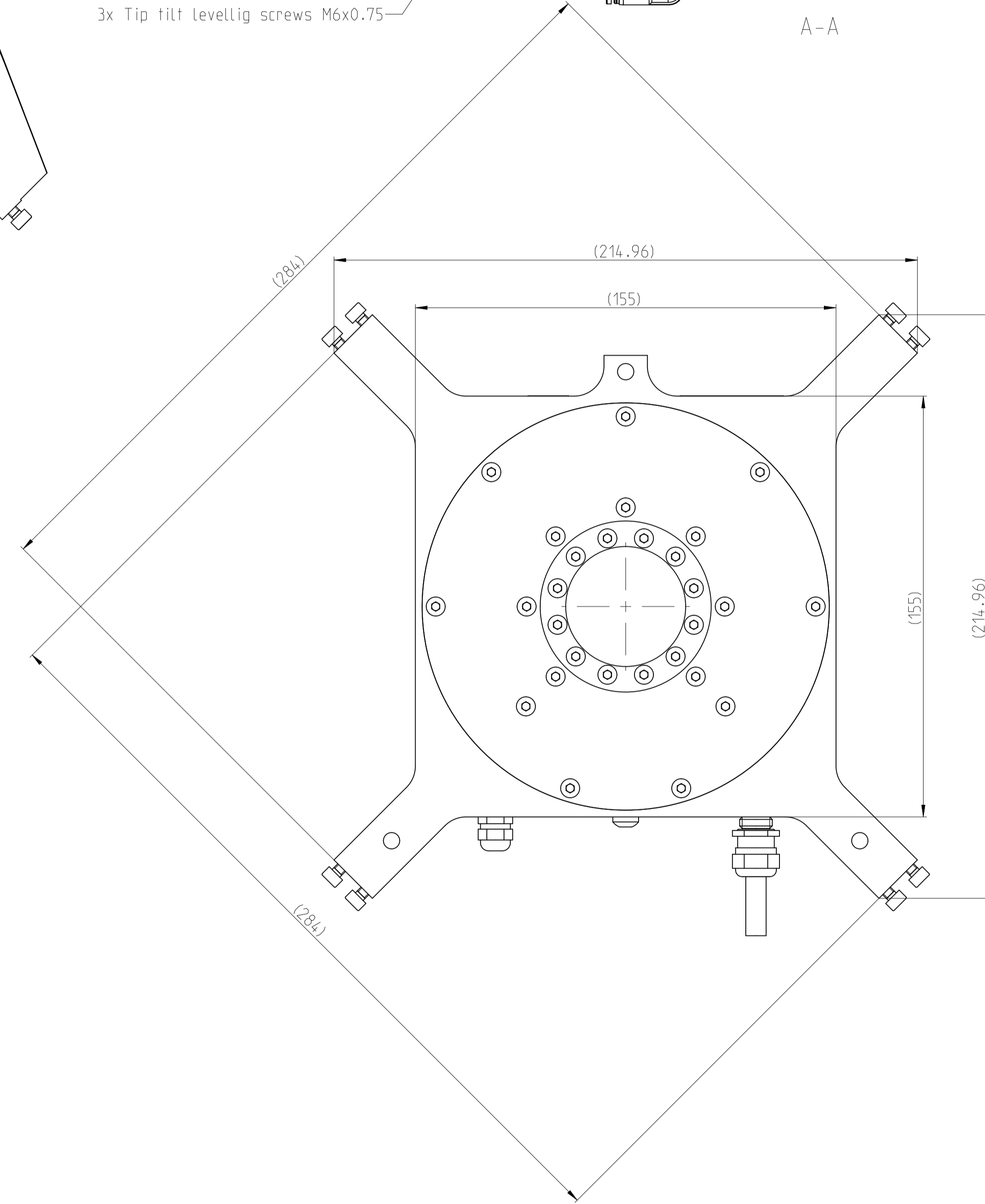
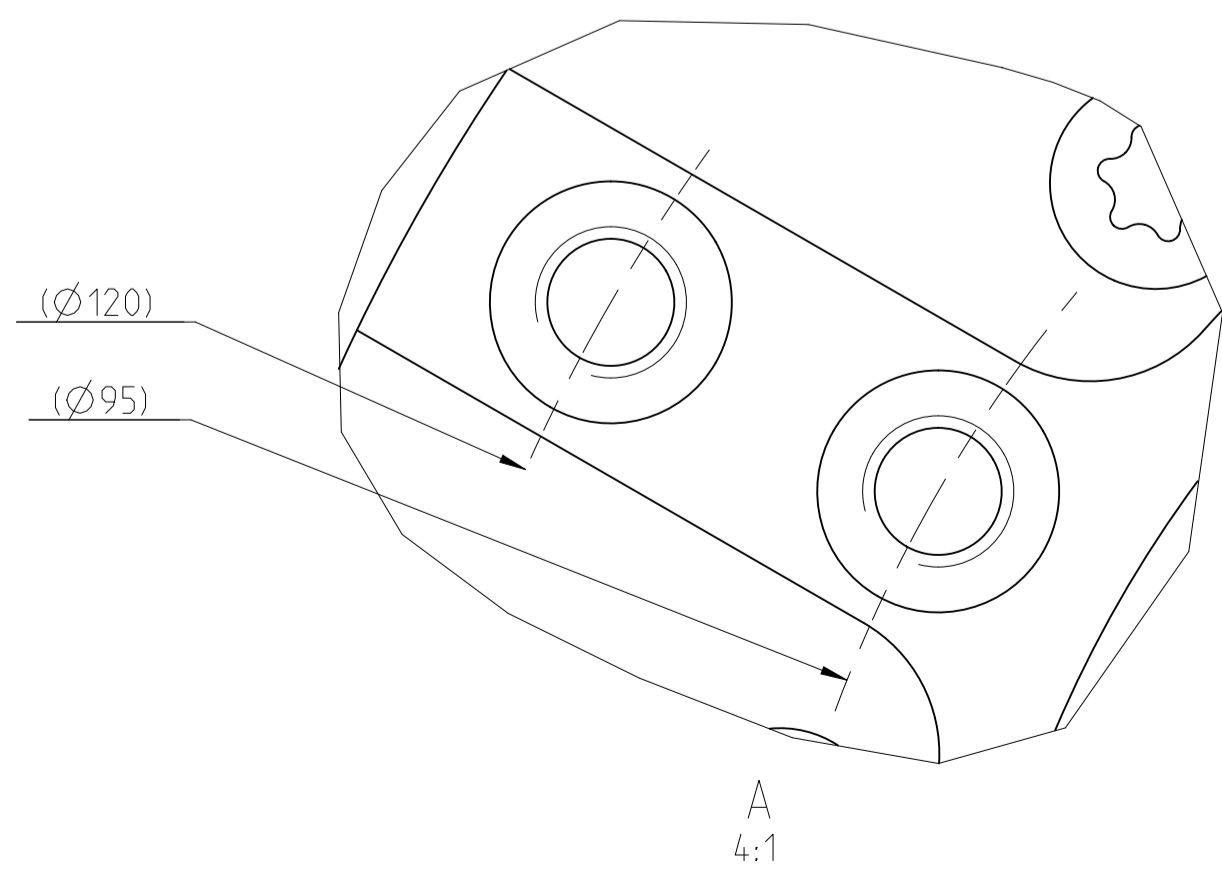
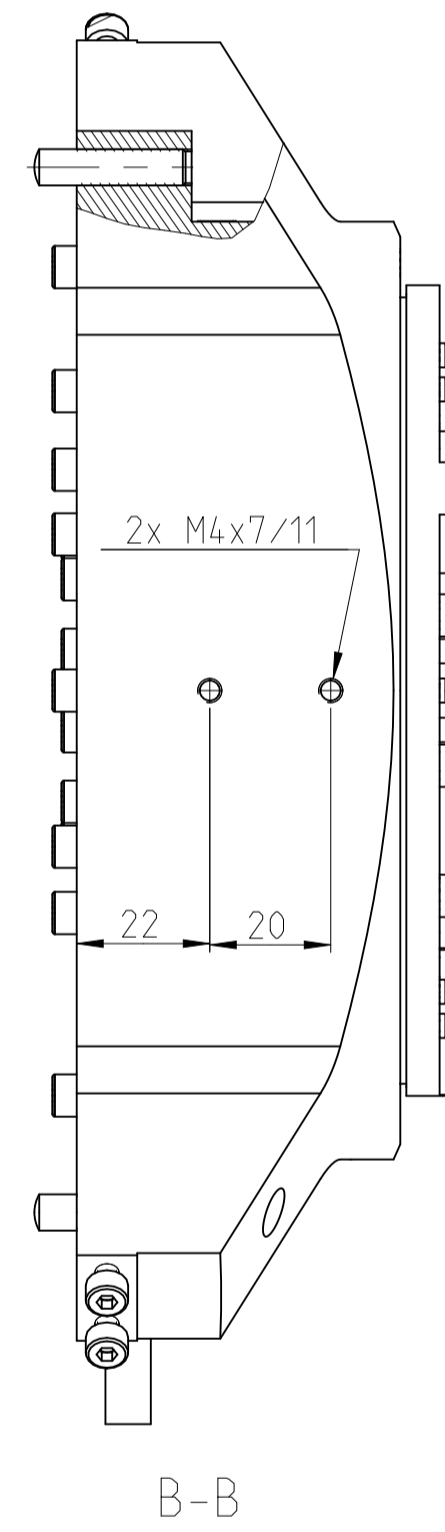
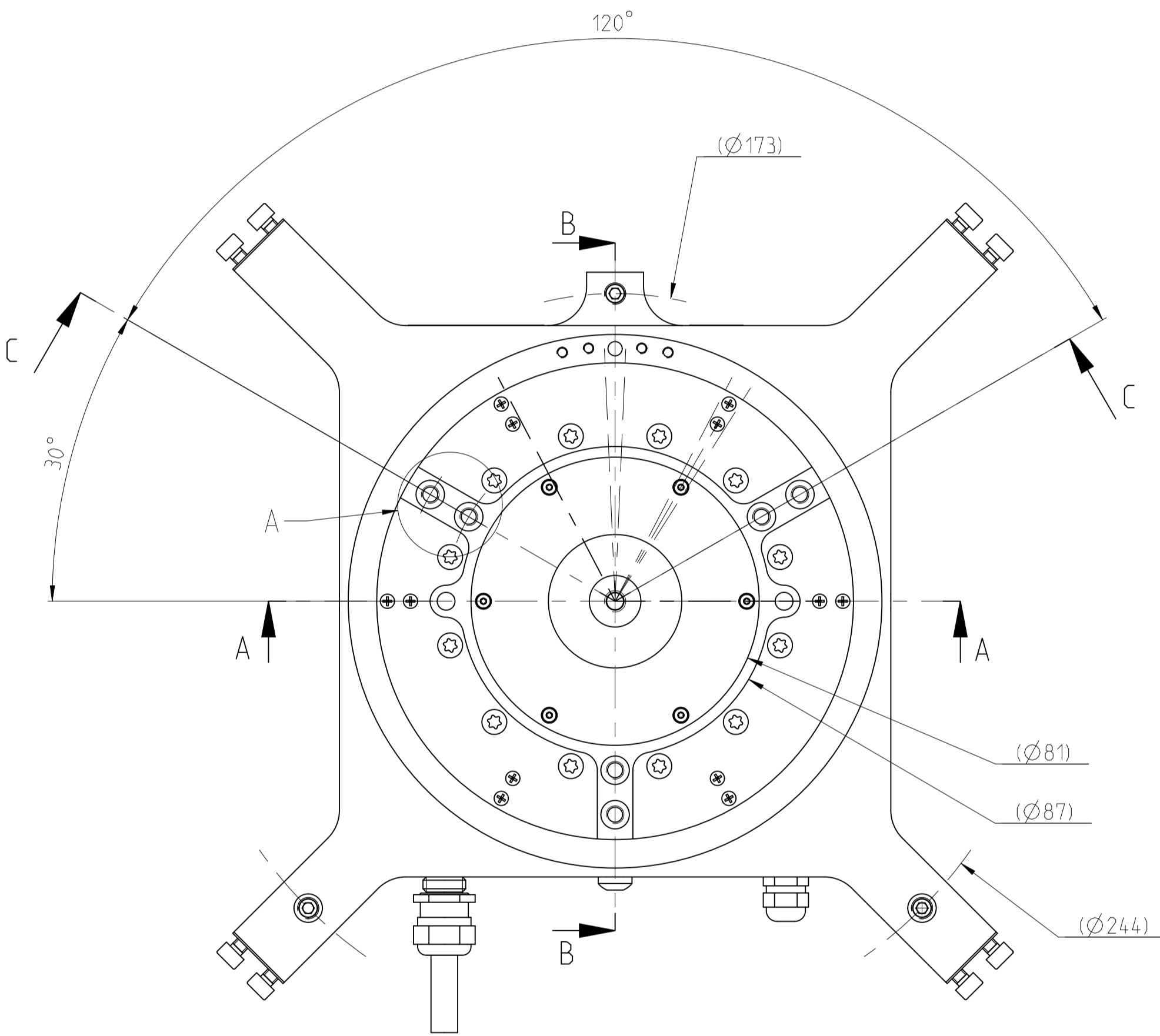
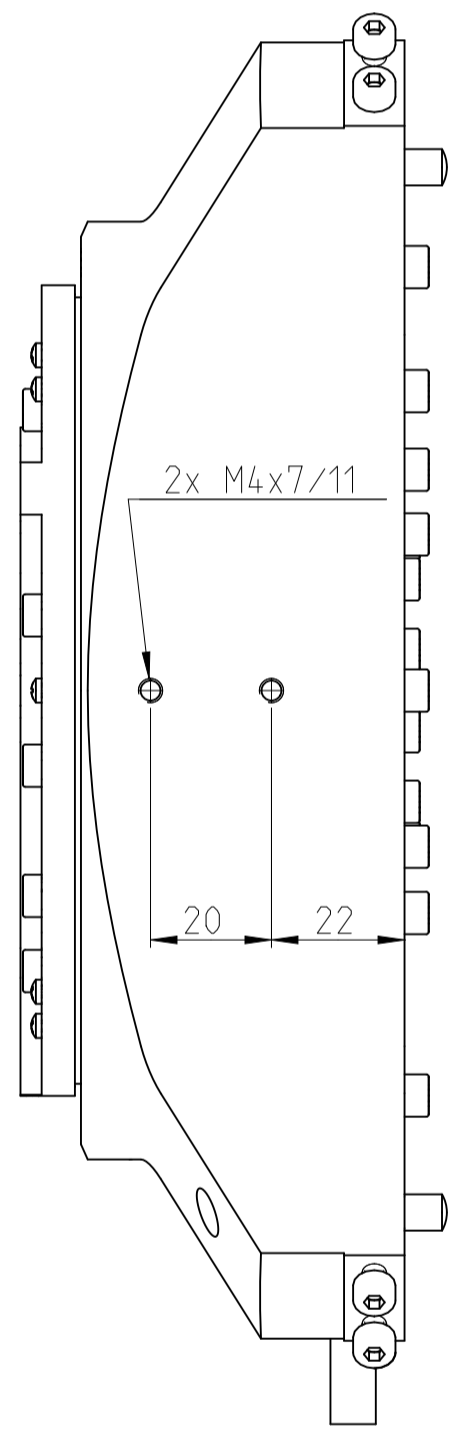
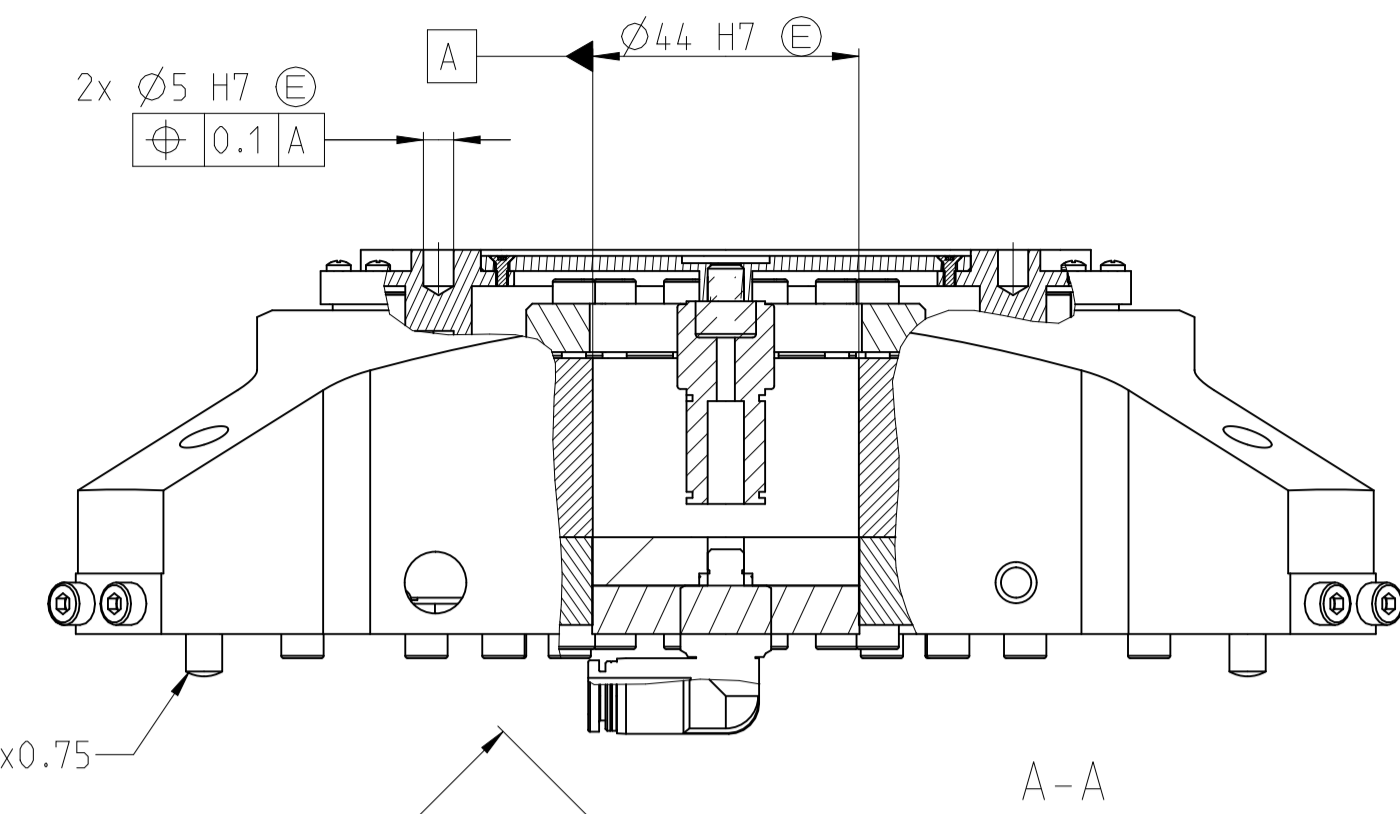
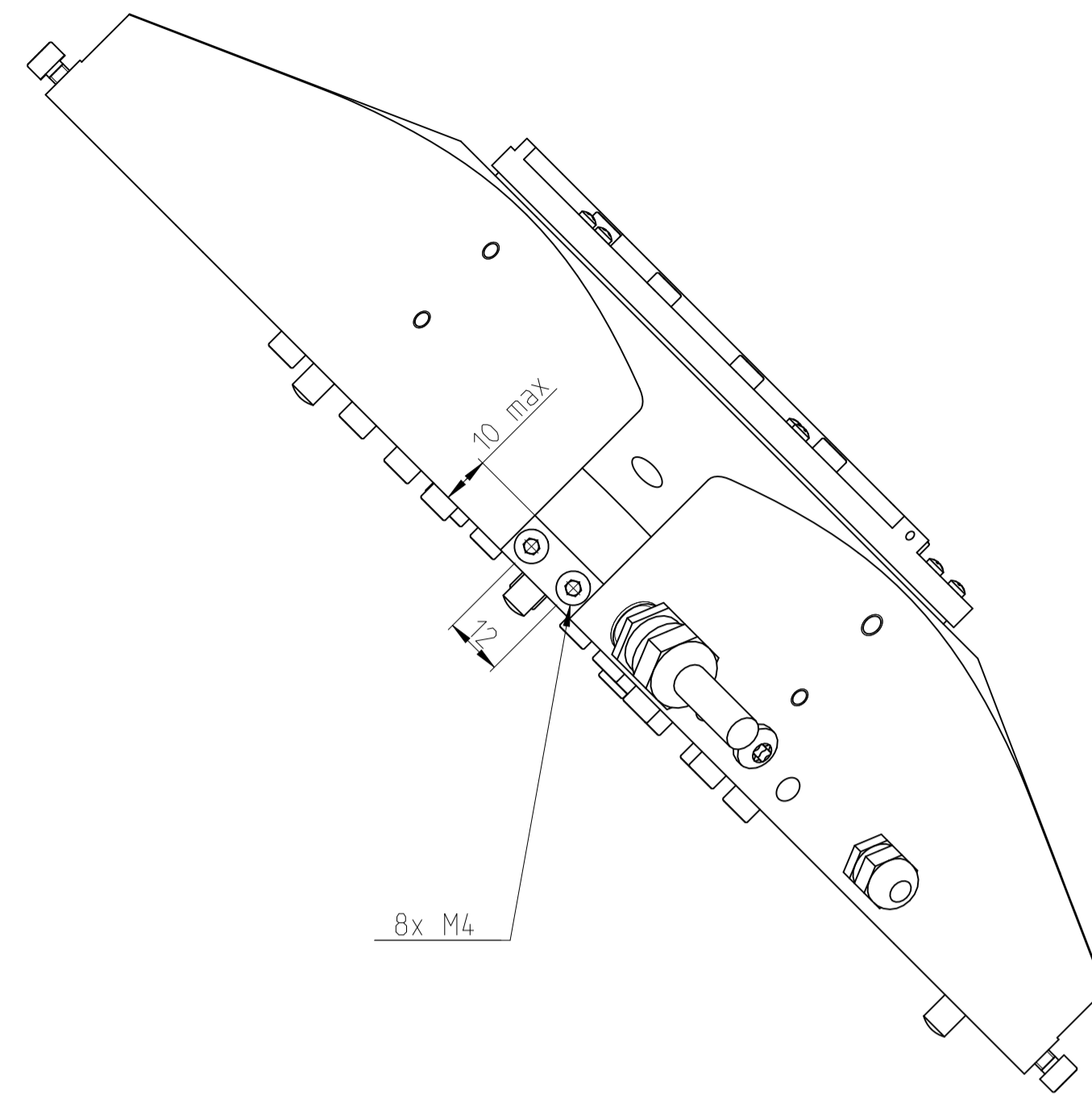
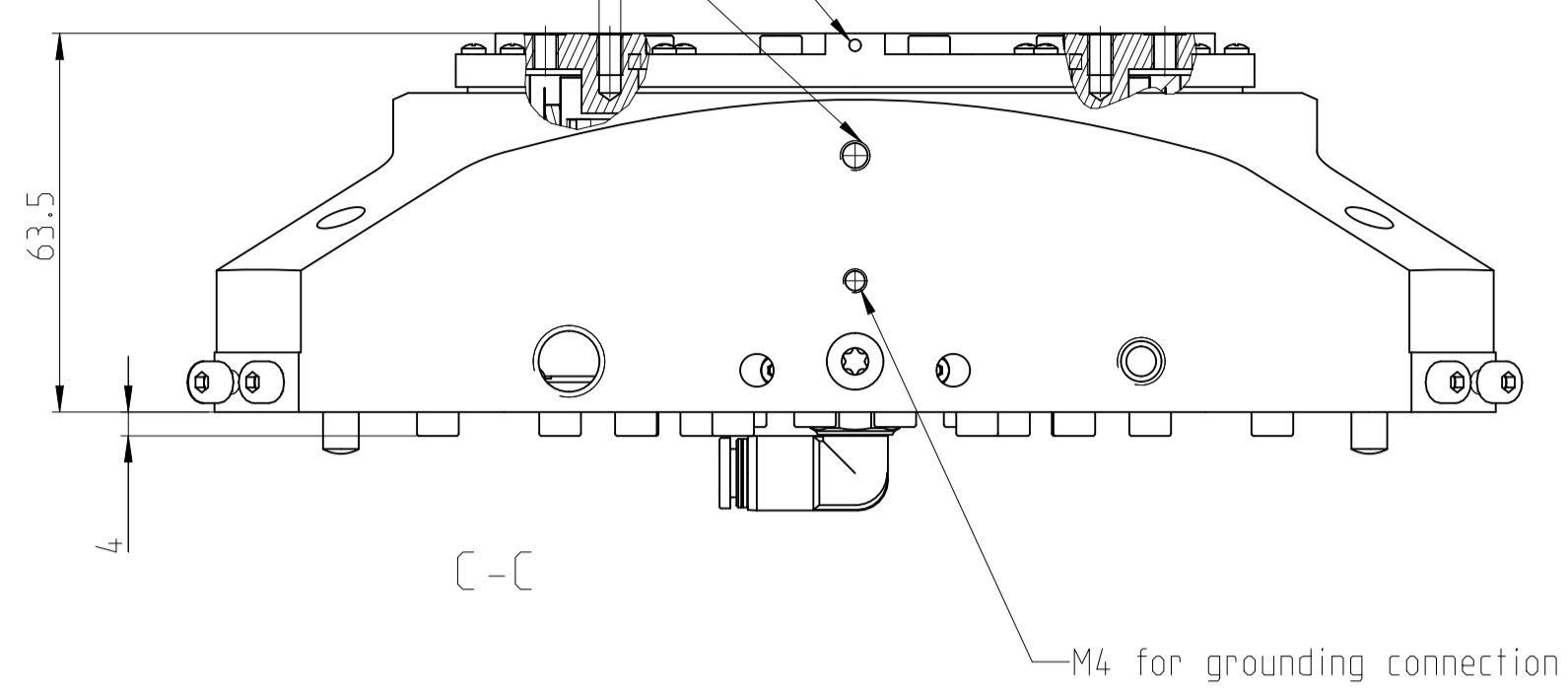


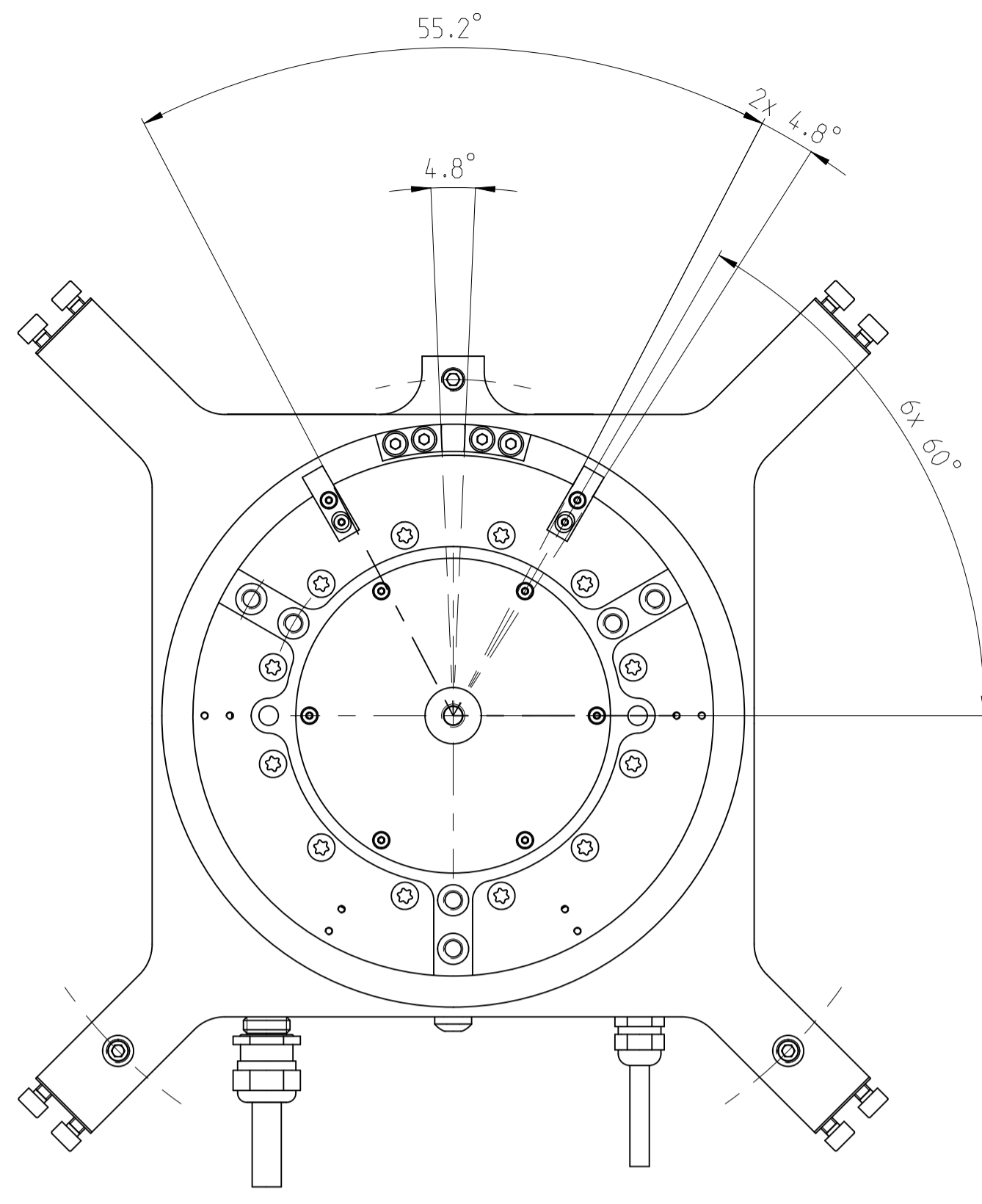
Table is at indexing position when mark on top plate is aligned with grounding threaded hole.
Tolerance $\pm 5^\circ$

M5 for blocking device

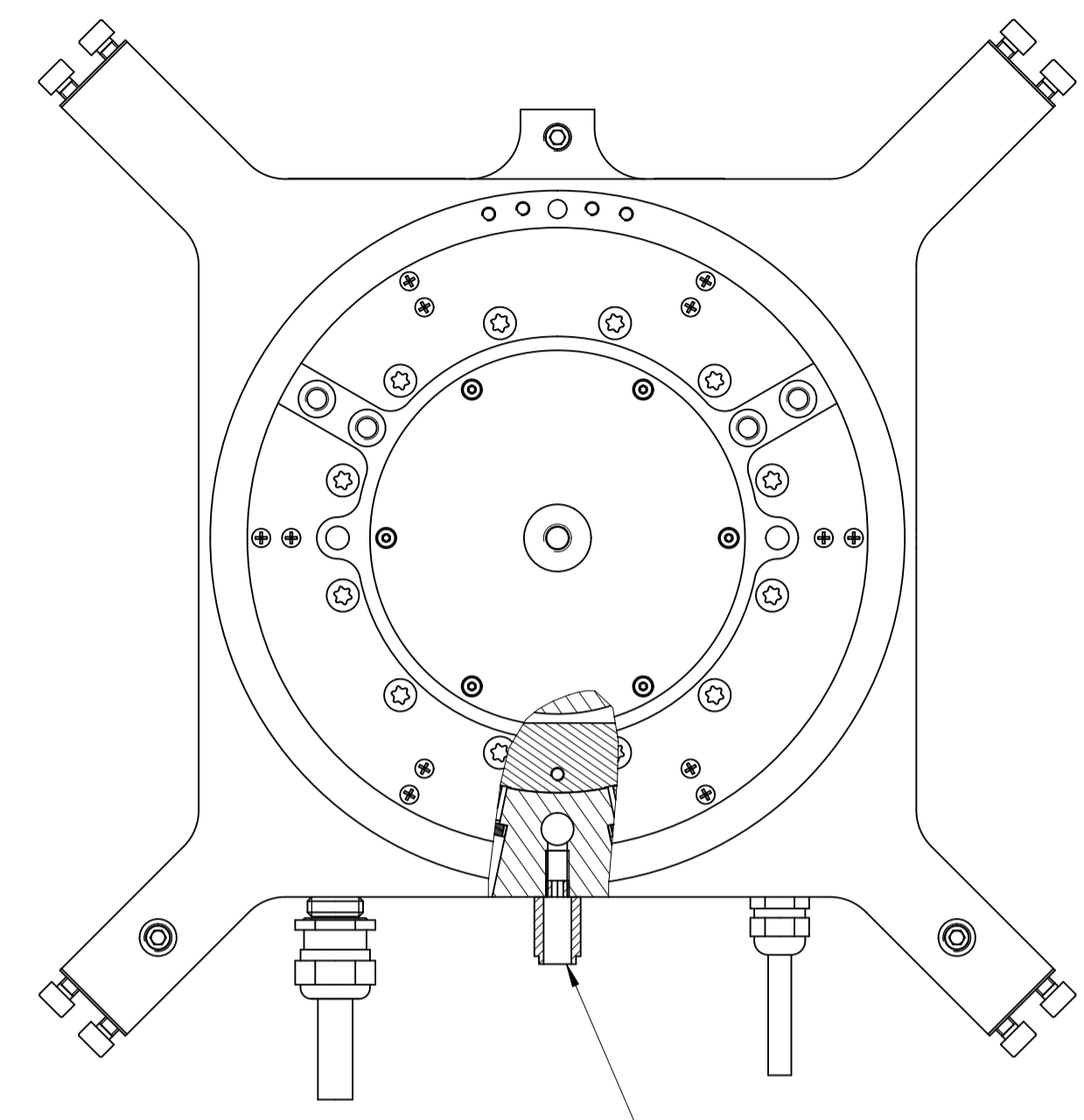
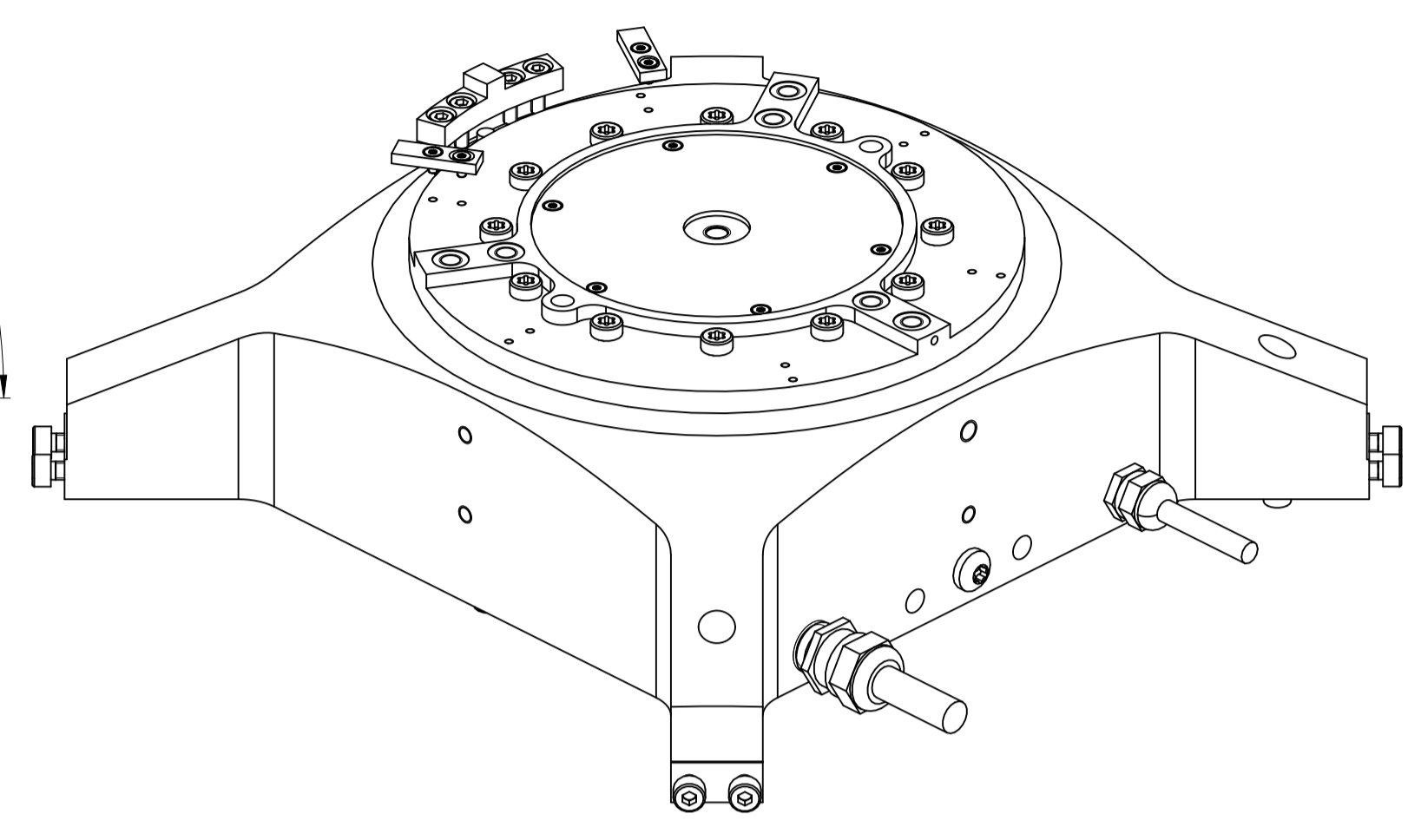
6x M5
Maximum screw penetration : 5.5
 $\oplus 0.3$ A



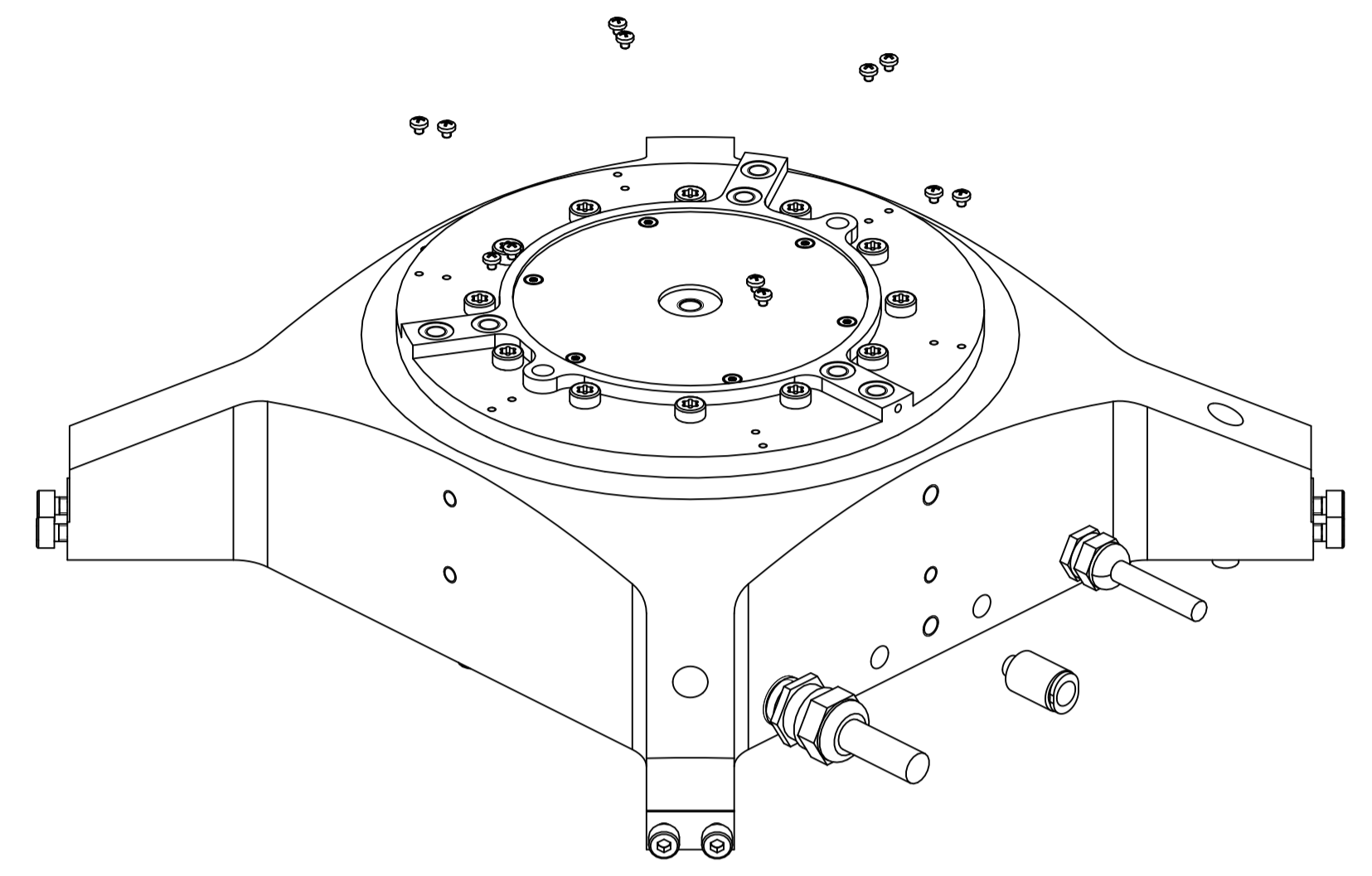
01	Text : -	Part number
Release n° :	C050212-05 Non serial	
Material :	-	
Treatment :	-	
Edges of undefined shape ISO 13715	-	
± 0.3	± 0.3	
DXR+ 155 - All options		
DXR+ 155 - All options		
ETEL S.A. 2712 Mollens SWITZERLAND	This document is the property of ETEL S.A. and is submitted in confidence. Disclosure, reproduction or application without written authorization is prohibited.	Projection Size Scale Old n° Version/Revision Sheet Page Original A1 4:5 1178453 01 A 01 1/2
Drawn	Checked	Approved



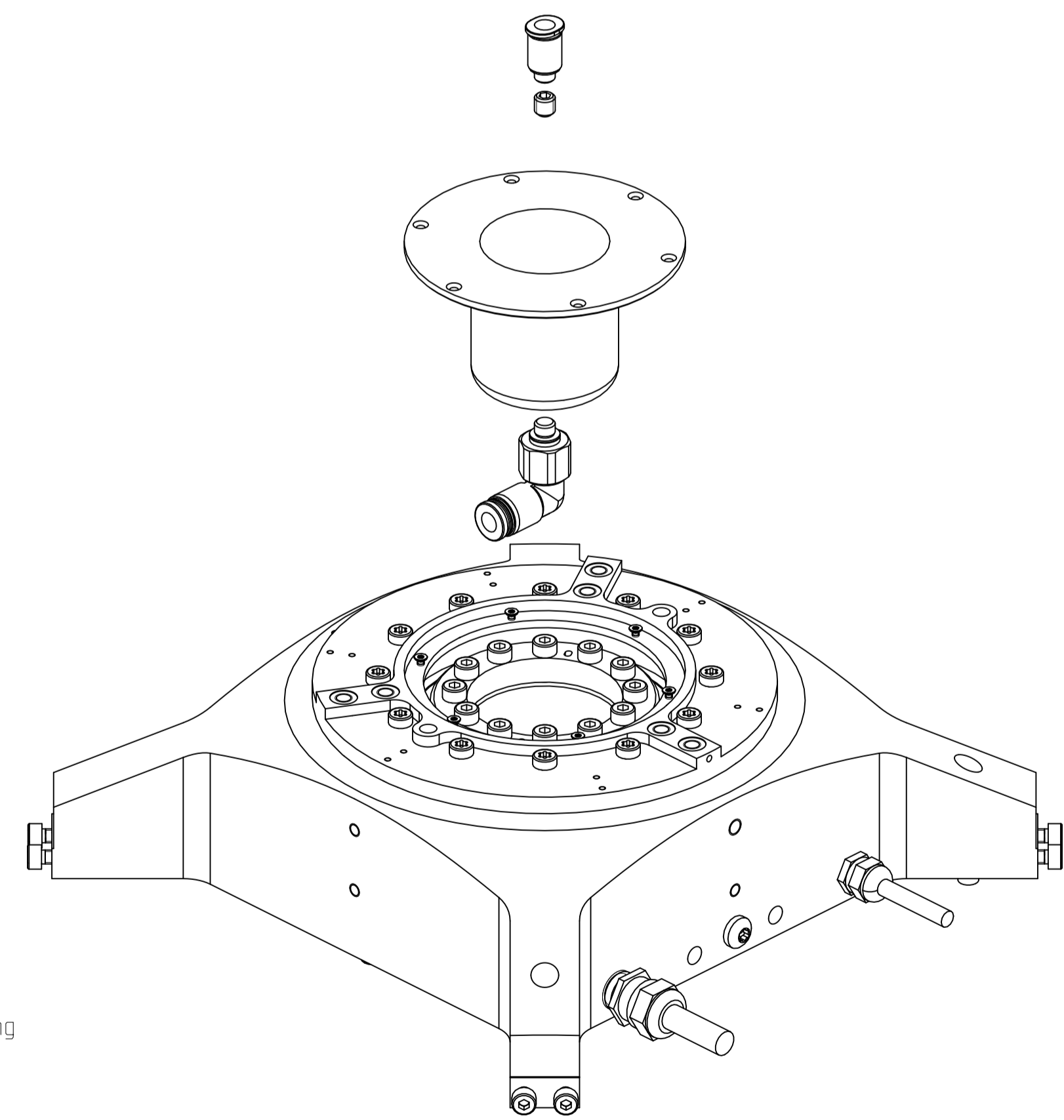
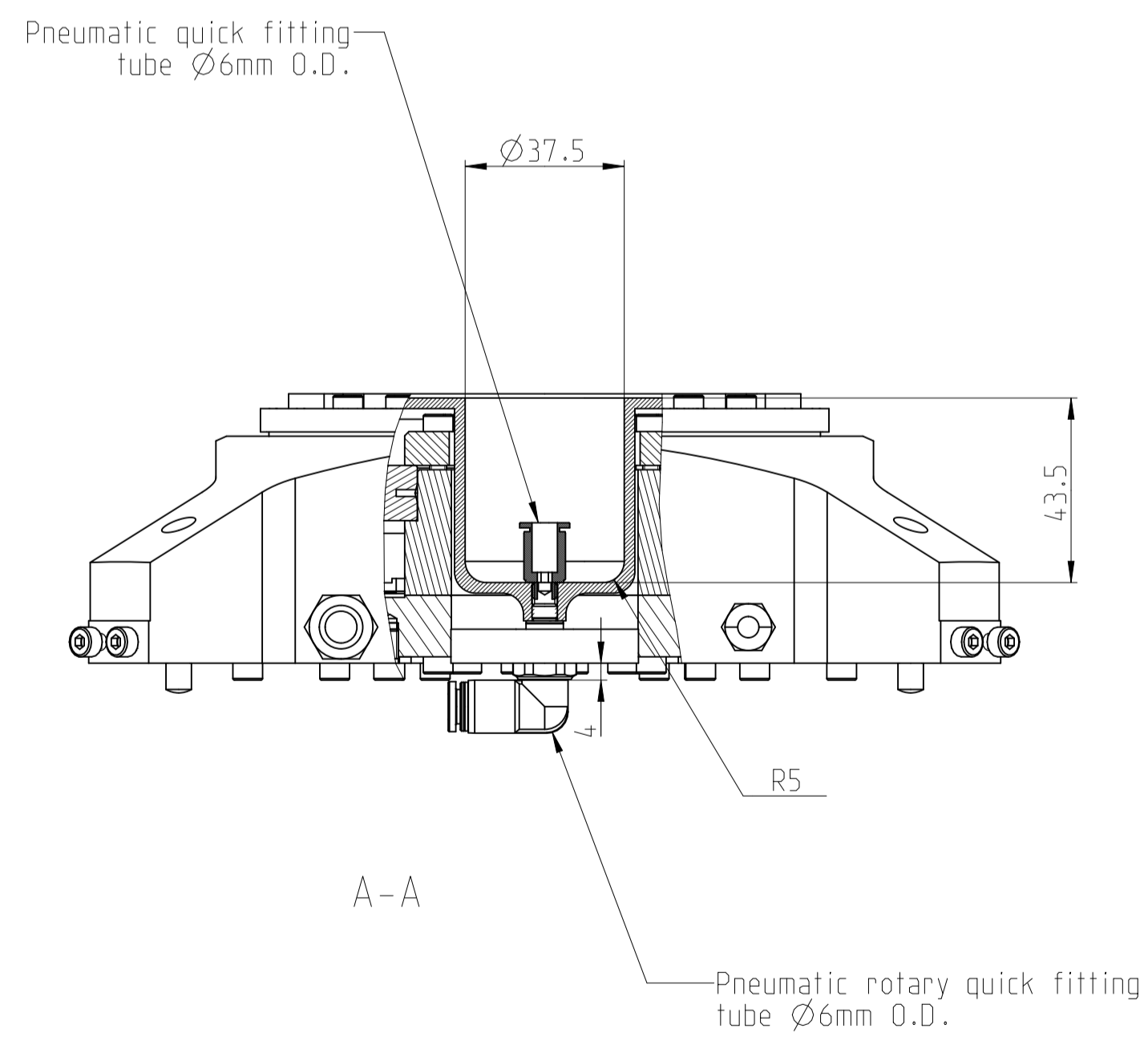
With option hard stops



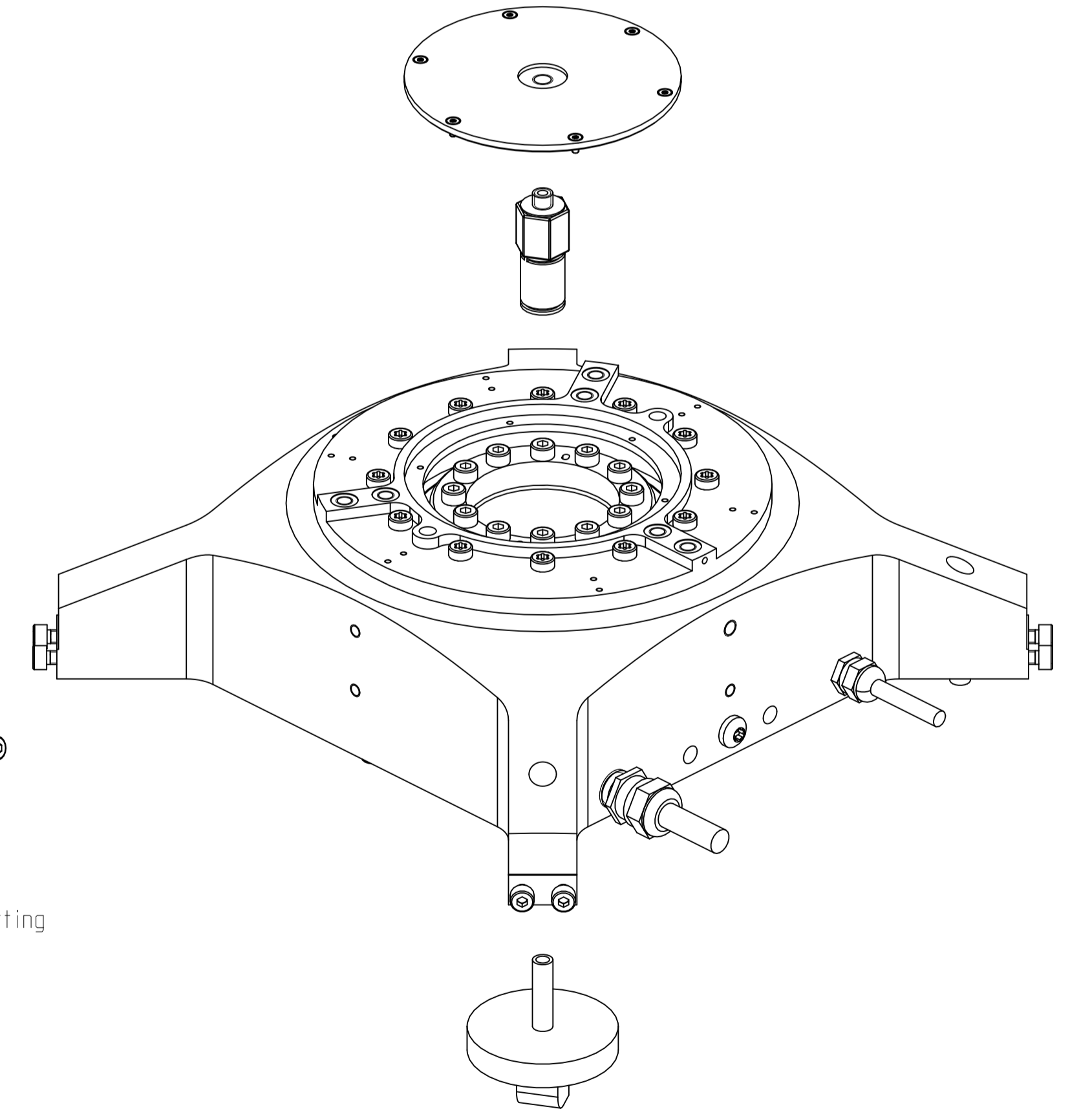
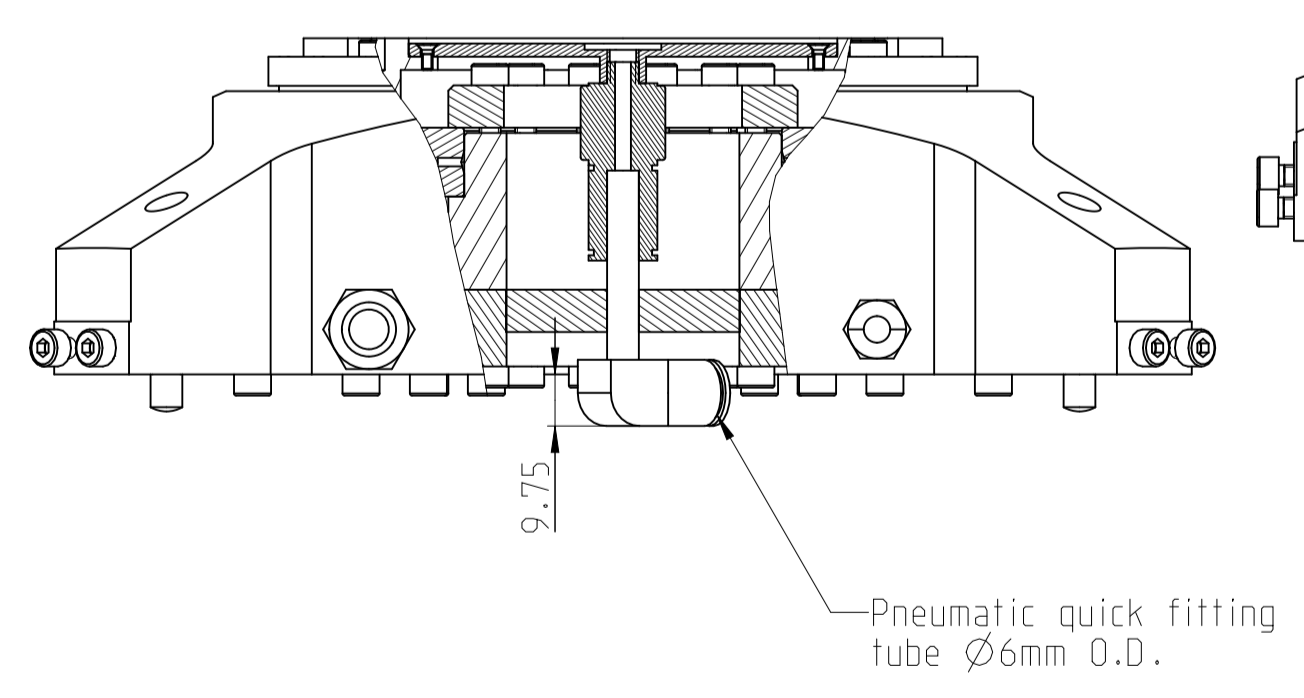
With option air purge



With option chuck vacuum, tube connect



With option chuck vacuum chamber



01	Text : -	Part number
Release n° : C050212-05 Non serial		
Material :	-	
Treatment:	-	
Edges of undefined shape ISO 13715	-	
± 0.3	± 0.3	
DXR+ 155 - All options		
	ETEL S.A. 2712 Mollens SWITZERLAND	This document is the property of ETEL S.A. and is submitted in confidence. Disclosure, reproduction or application without written authorization is prohibited.
Projection	Size	Scale
Original	A1	7:10
Old n°:	Version/Revision	Sheet Page
1178453	01 A	01 2/2
Docucent number		