

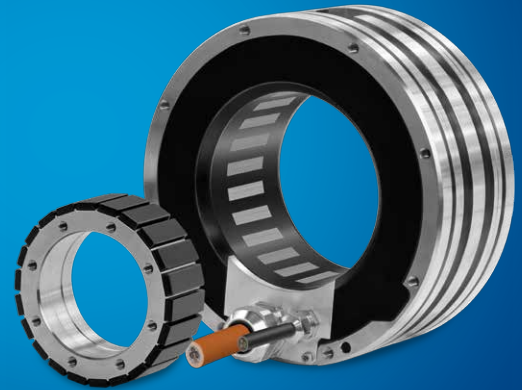


ETEL S.A.

Zone Industrielle
2112 Môtiers
Switzerland

T +41 32 862 01 00

etel@etel.ch - www.etel.ch



Torque **Motors**

TMB+

ETEL

version 2.1 - 02/18 - subject to modifications without previous notice

ETEL

TORQUE MOTORS



TMB+ is an evolution of the renowned TMB torque motor that provides a combination of increased performance and new features while maintaining the interfaces of existing motors.

The torque density of TMB+ is increased by up to 20% while keeping the exact same footprint and reducing the power losses by up to 30%. Speed range is also significantly increased.

TMB+ enables enhanced machine performance and allows for new processes to be achieved in existing machines without any design change effort. With its outstanding performance level, TMB+ will give access to direct drive technology for more applications while keeping quality and reliability at their highest level and reducing cost of ownership.

PERFORMANCE

- Peak torque up to 42900 Nm
- Continuous torque up to 22300 Nm
- Speed up to 4590 rpm

TMB+ vs. TMB

- Continuous torque increased by up to 20%
- Peak torque increased by 5%
- Reduction of power losses by up to 30%
- Speed capability increased by a factor up to 4x
- New motor sizes
- New 200 mm active length
- Double the amount of winding variants
- Same mechanical interface

MAIN FEATURES

- External diameter up to 1290 mm
- Large hollow shaft up to 1070 mm
- More than 60 standard sizes available
- Nickel coating on stator and rotor
- With cage and liquid cooling channels
- 600 VDC bus voltage
- Very high continuous torque density
- Very high peak torque
- Low torque ripple
- Extendible speed range with flux weakening
- Compatible with IMTHP module for accurate thermal control



TMB+ MOTORS RANGE

