



ETEL S.A.

Zone Industrielle
2112 Môtiers
Switzerland

T +41 32 862 01 00

etel@etel.ch - www.etel.ch



Motion Control

WINGLET software

ETEL

version 1.0 - 04/21 - subject to modifications without previous notice

ETEL

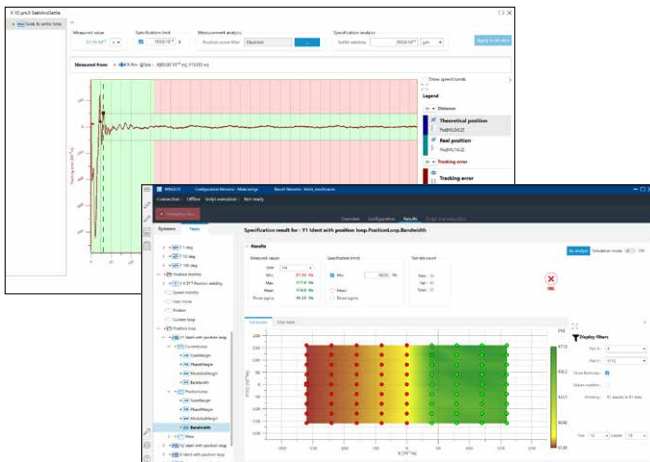
WINGLET SOFTWARE

WINGLET WINGLET is a powerful software tool for automated test and simulation designed to operate with equipment controlled by ETEL's ACCURET/ULTIMET controllers range.

WINGLET addresses a wide range of users active anywhere along the path from the design phase to the end-user's equipment. From a pure machine performance enabler, WINGLET also brings significant benefits to automated testing procedures at the OEMs' production floor, as well as helping streamline field services interventions and troubleshooting. WINGLET can benefit each of these parties by:

- Shortening design phases and increasing machine performance level
- Ensuring robustness and repeatability in equipment manufacturing
- Providing fast and precise machine diagnostics

MAIN FEATURES



- **Performance visualization, optimization and simulation.**

WINGLET provides the tools to easily measure and display key motion related specifications, such as: move & settle, jitter, speed stability, bandwidth, etc. over the whole working space.

- **Automated testing.** WINGLET is designed to run user-defined test choreographies at multiple locations and compare results with user-defined specifications to quickly provide a pass/fail status making it extremely easy and repeatable to qualify an equipment at any time of its production/installation process.
- **Efficient troubleshooting.** WINGLET offers the ability to execute pre-defined sets of tests that can be as extensive as required and to visualize if the motion system behavior is matching with its expected performance, thus excluding it from the root cause if it is the case.

SOFTWARE VARIANTS

What an OEM is willing to do at his facility with WINGLET is different from what this same OEM will allow doing on the equipment in the field. To cover this, WINGLET comes in two flavors:

WINGLET OEM

This high-end version of the software tool is fitted with all features. It notably allows:

- Creating/editing test choreographies;
- Defining/editing pass/fail criteria;
- Tuning control parameters and simulating.

This fully featured variant of WINGLET is suitable for OEMs' headquarters, R&D teams, Head of Service, Head of Manufacturing and possibly other OEM key users.

WINGLET RUNTIME

A lighter version of WINGLET is available to be installed on every equipment shipped to its end-user to allow full execution of tests and extensive results visualization. However, it prevents a user from modifying choreographies, pass/fail criteria or test results.

This variant is designed on purpose to provide all advantages of WINGLET to the installed equipment without the "editing capabilities".