

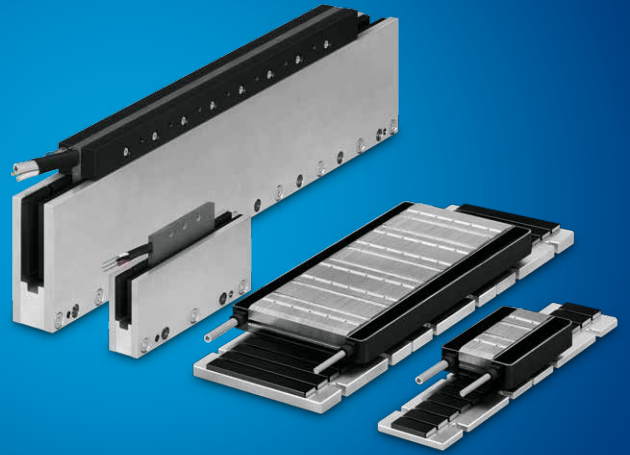


## **ETEL S.A.**

Zone Industrielle  
2112 Môtiers  
Switzerland

T +41 32 862 01 00

[etel@etel.ch](mailto:etel@etel.ch) - [www.etel.ch](http://www.etel.ch)



# Linear Motors

# **ETEL**

version 3.1 - 02/18 - subject to modifications without previous notice

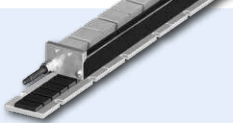
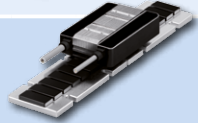
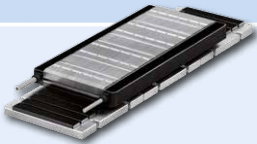
# **ETEL**

During the last two decades, many linear motor variations have emerged on the market. Nevertheless, only a few were found to be practical, performed well and economically viable. ETEL has always remained dedicated to the flat, synchronous, 3-phase linear motors with permanent magnet excitation. This family of motors represents more than 90 percent of industrial applications worldwide.

They can be divided into two categories: ironcore and ironless motors. Based on these two technologies, ETEL developed product variants to reach optimal performance in a wide range of applications.

➤ For more information, refer to our **Linear Motors** catalog and leaflet.

## IRONCORE MOTORS

<b>LMA</b>	<ul style="list-style-type: none"> <li>• Highest continuous force</li> <li>• Optimized for high duty cycle applications</li> <li>• 600 VDC compliant</li> </ul>	
<b>LMG</b>	<ul style="list-style-type: none"> <li>• Compact design</li> <li>• Economic</li> <li>• High peak force</li> <li>• 600 VDC compliant</li> </ul>	
<b>LMS</b>	<ul style="list-style-type: none"> <li>• Compact design</li> <li>• Economic</li> <li>• High continuous force</li> <li>• 600 VDC compliant</li> </ul>	

### Highlights

- Speed up to 15 m/s
- Continuous force up to 956 N
- Peak force up to 3650 N
- Low force ripple
- All linear motor types work with the same MWD magnetic way

### Applications

- Wafer inspection systems
- Chip placement machines
- Flip-chip / die bonders
- Wire bonders
- PCB drilling
- PCB testing machines
- Flat panel display equipment
- Medical equipment
- General automation

