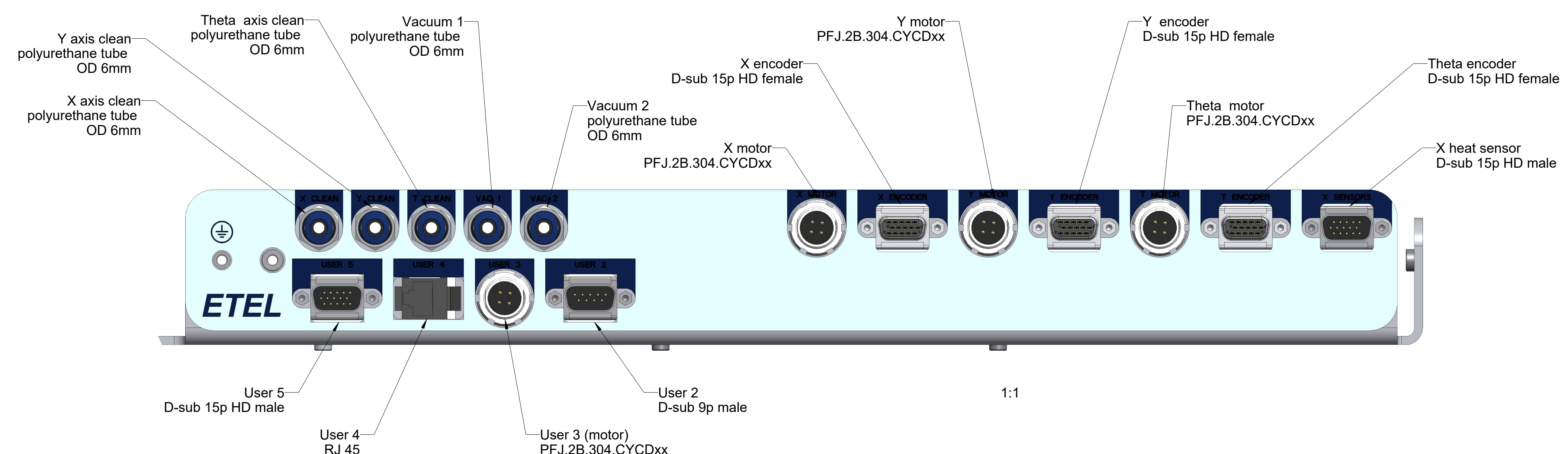
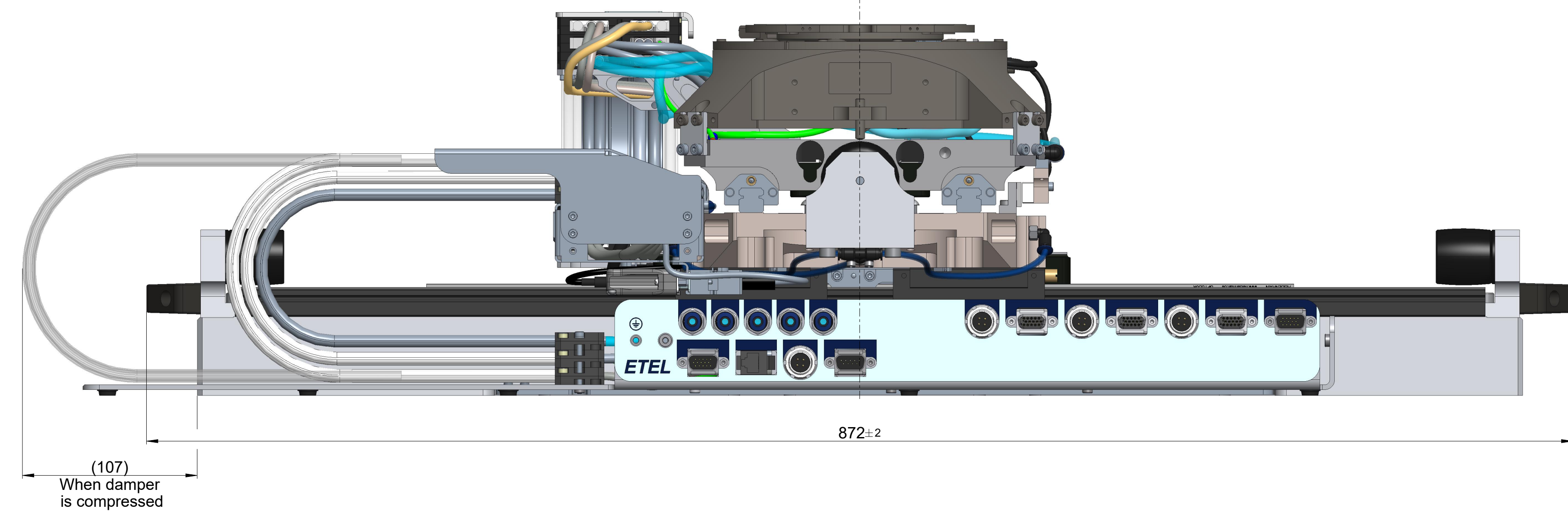
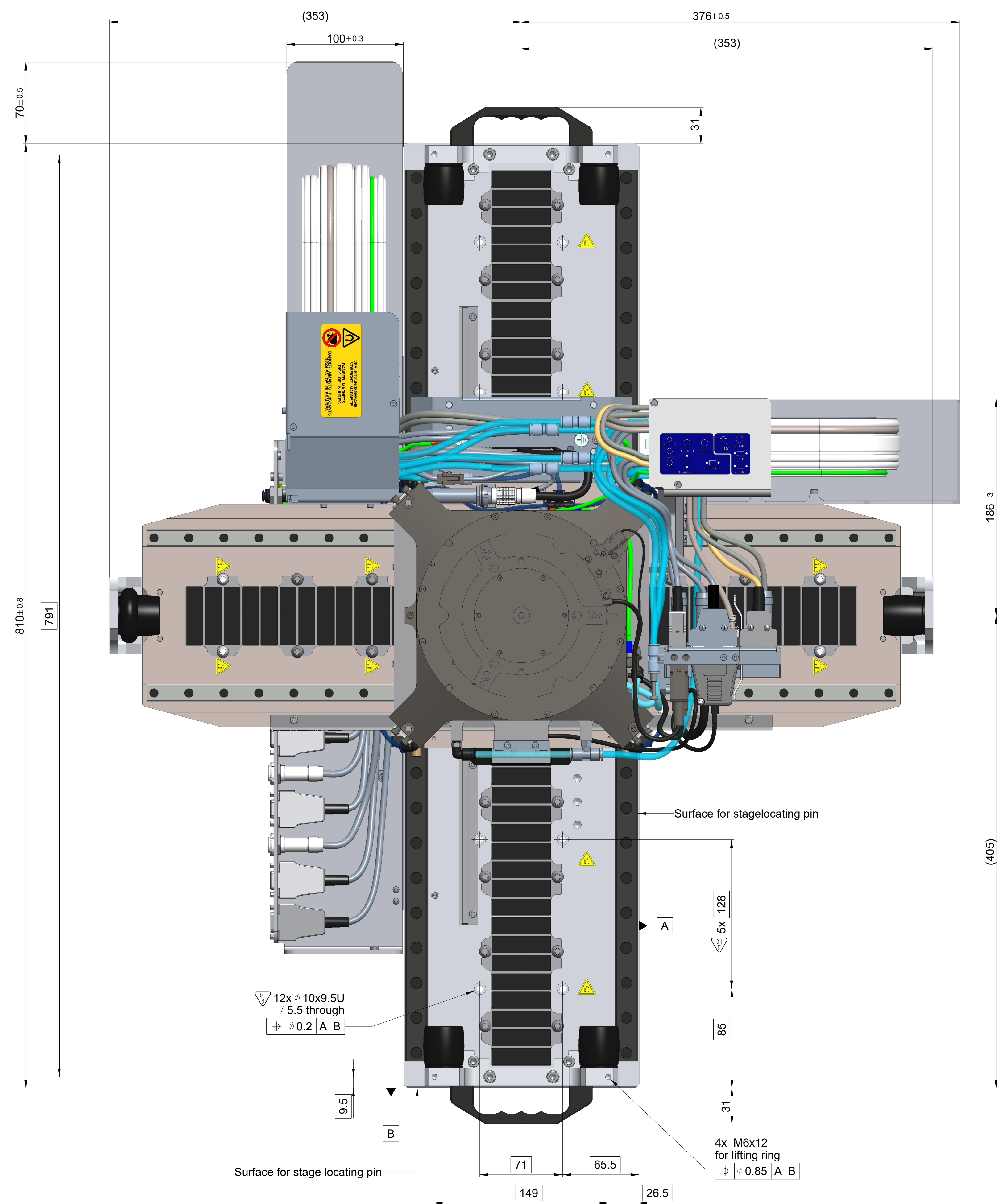


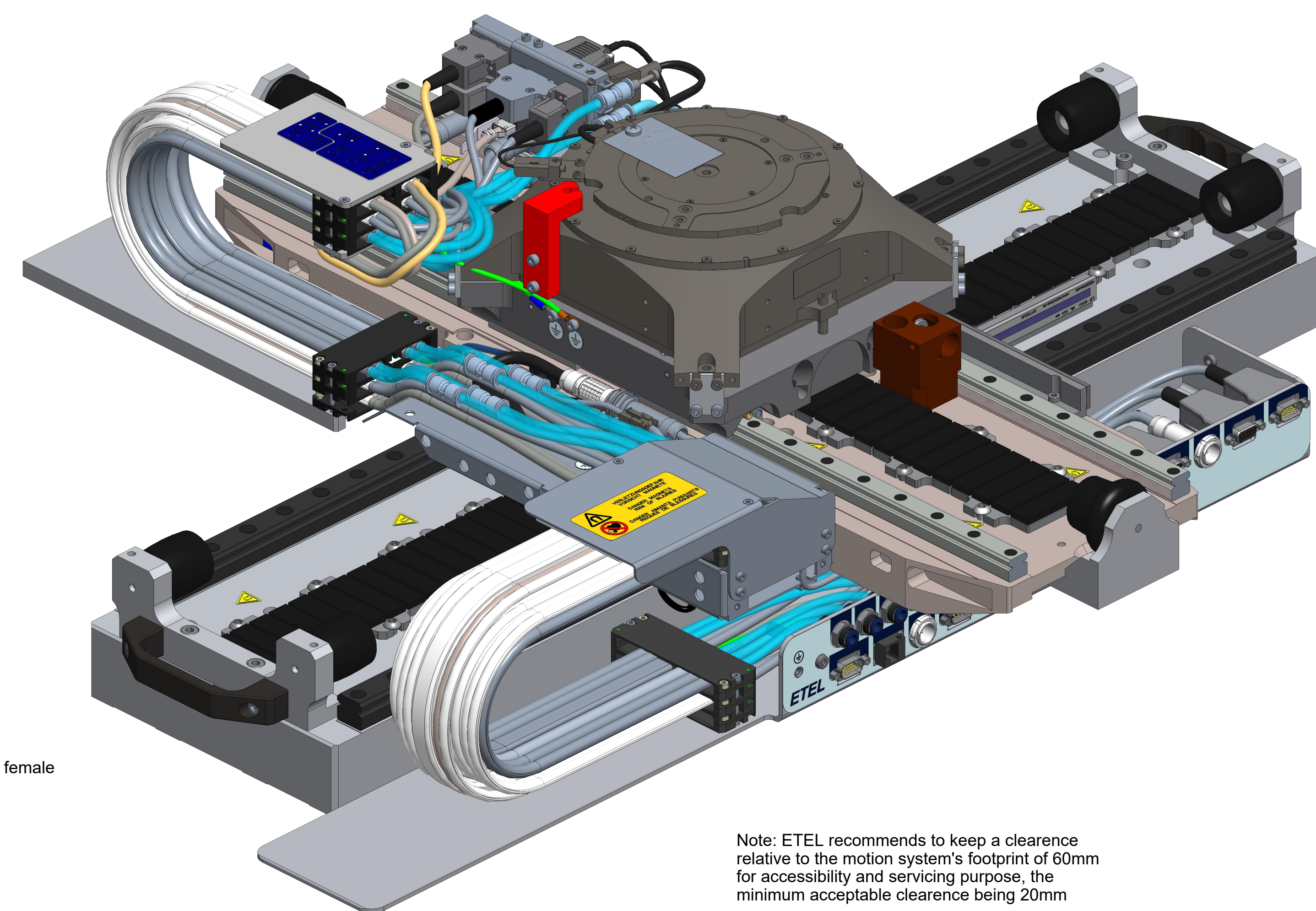
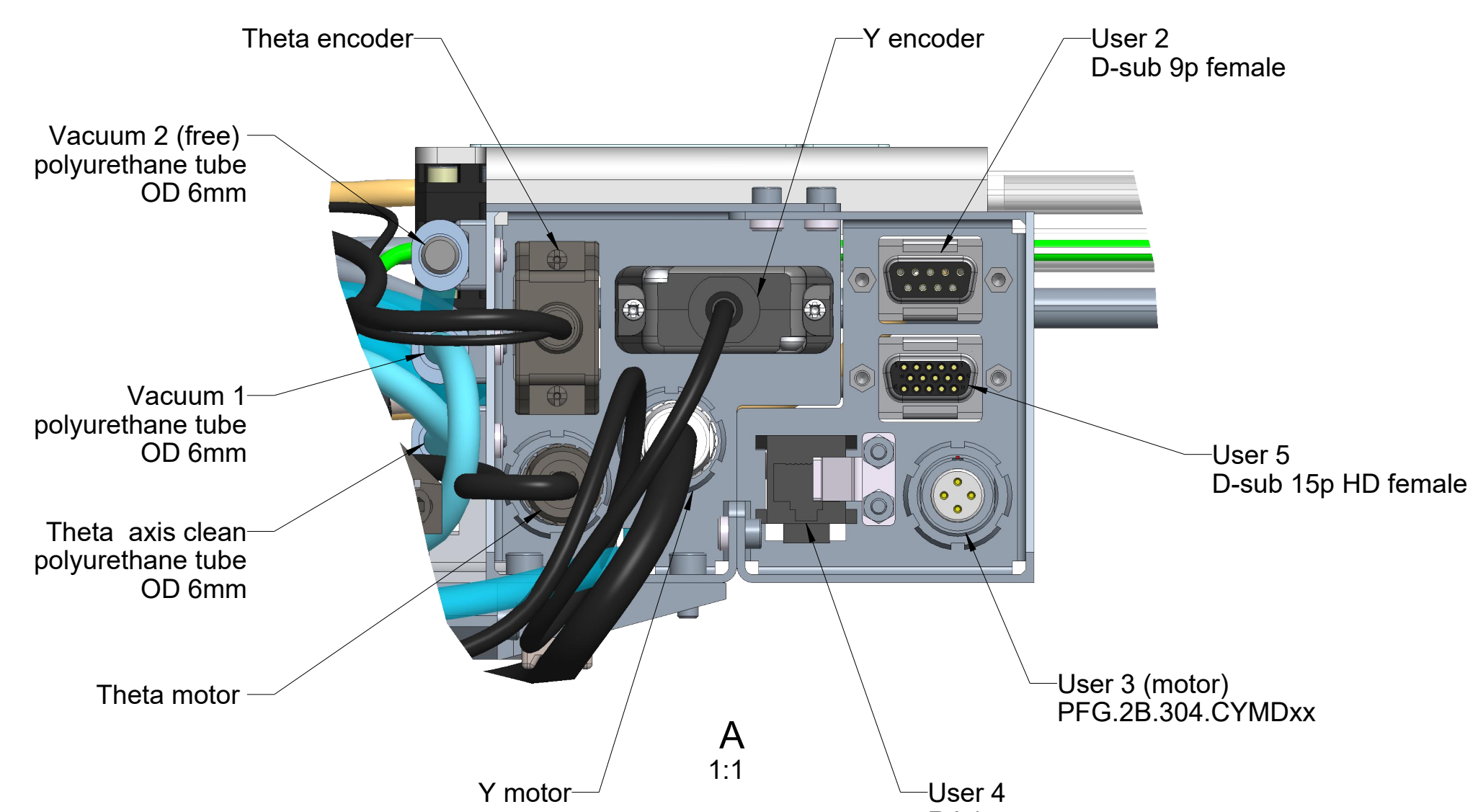
### Y AXIS

Stroke 410mm Minimum  
428mm when damper compressed



### X AXIS

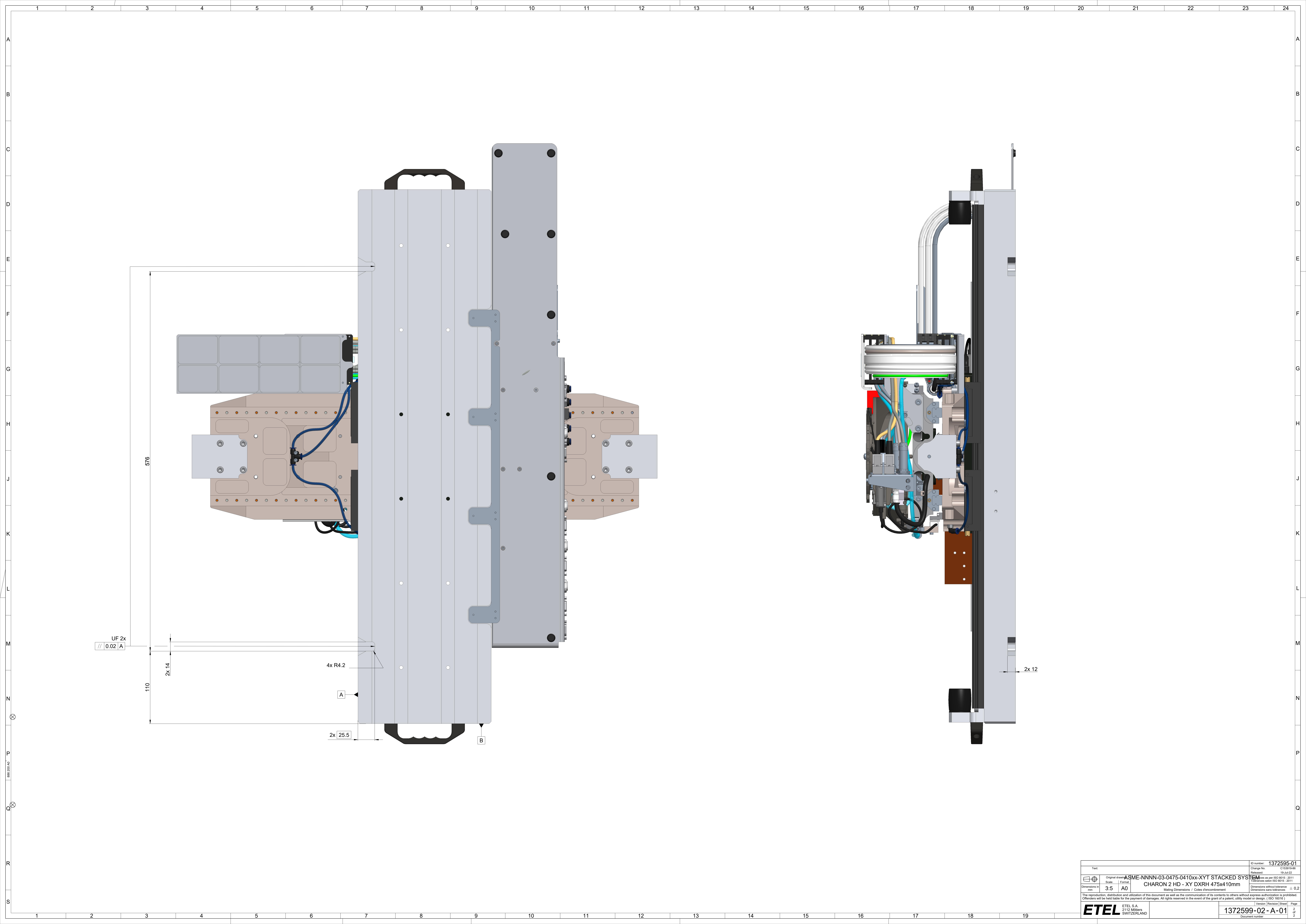
Stroke 475mm Minimum  
428mm when damper compressed



Note: ETEL recommends to keep a clearance relative to the motion system's footprint of 60mm for accessibility and servicing purpose, the minimum acceptable clearance being 20mm  
It is required to mount Charon 2 stages on a granite or equivalent flat surface with a flatness inferior or equal to 3 microns

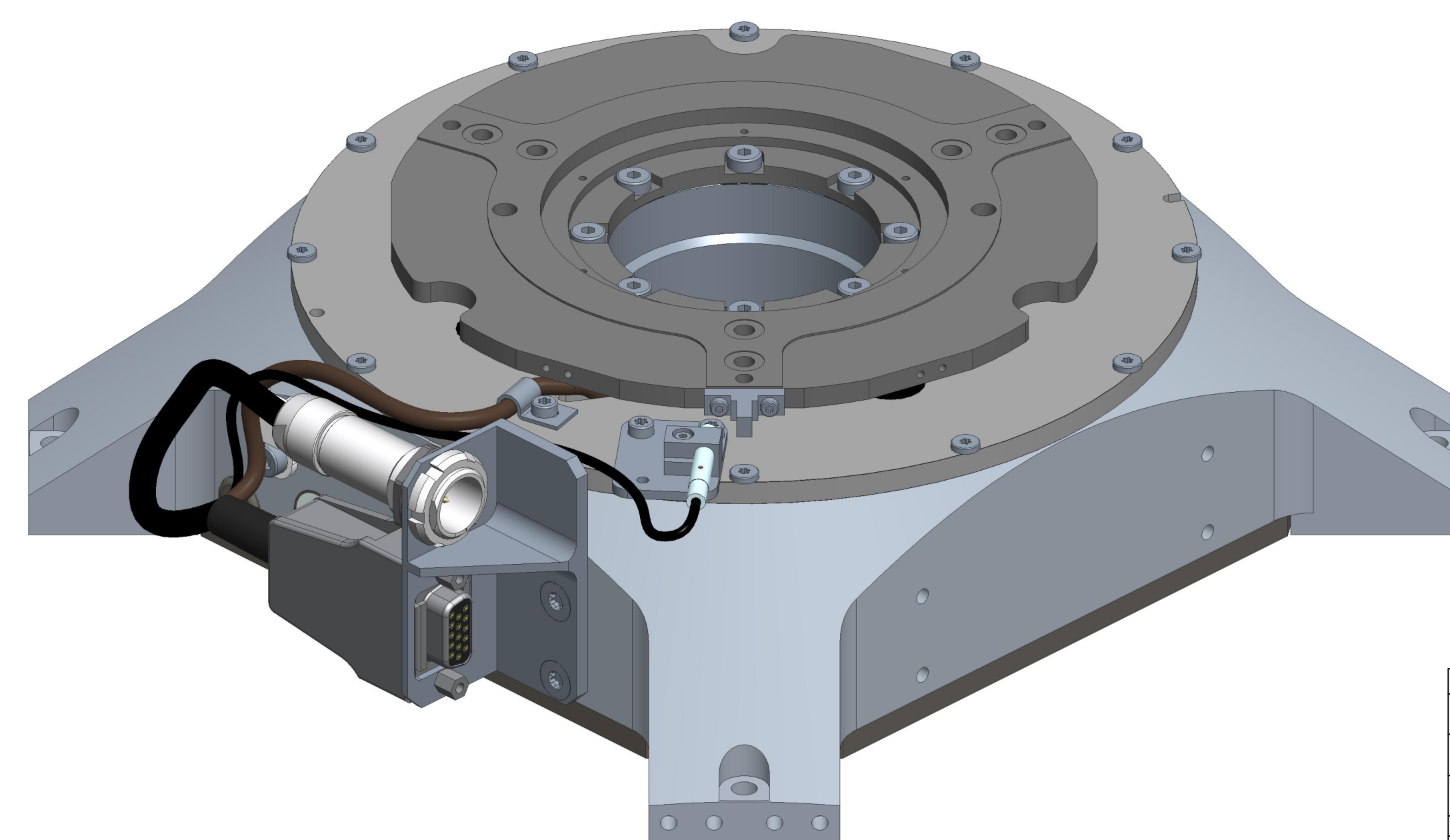
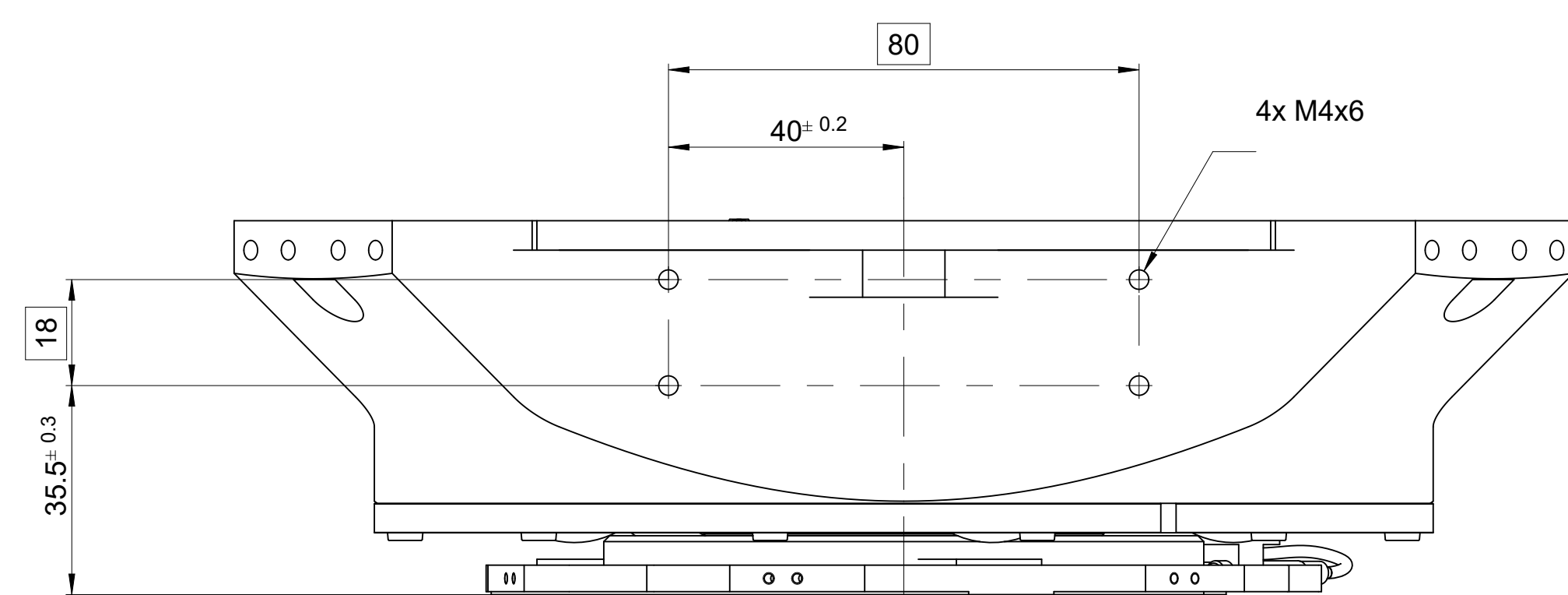
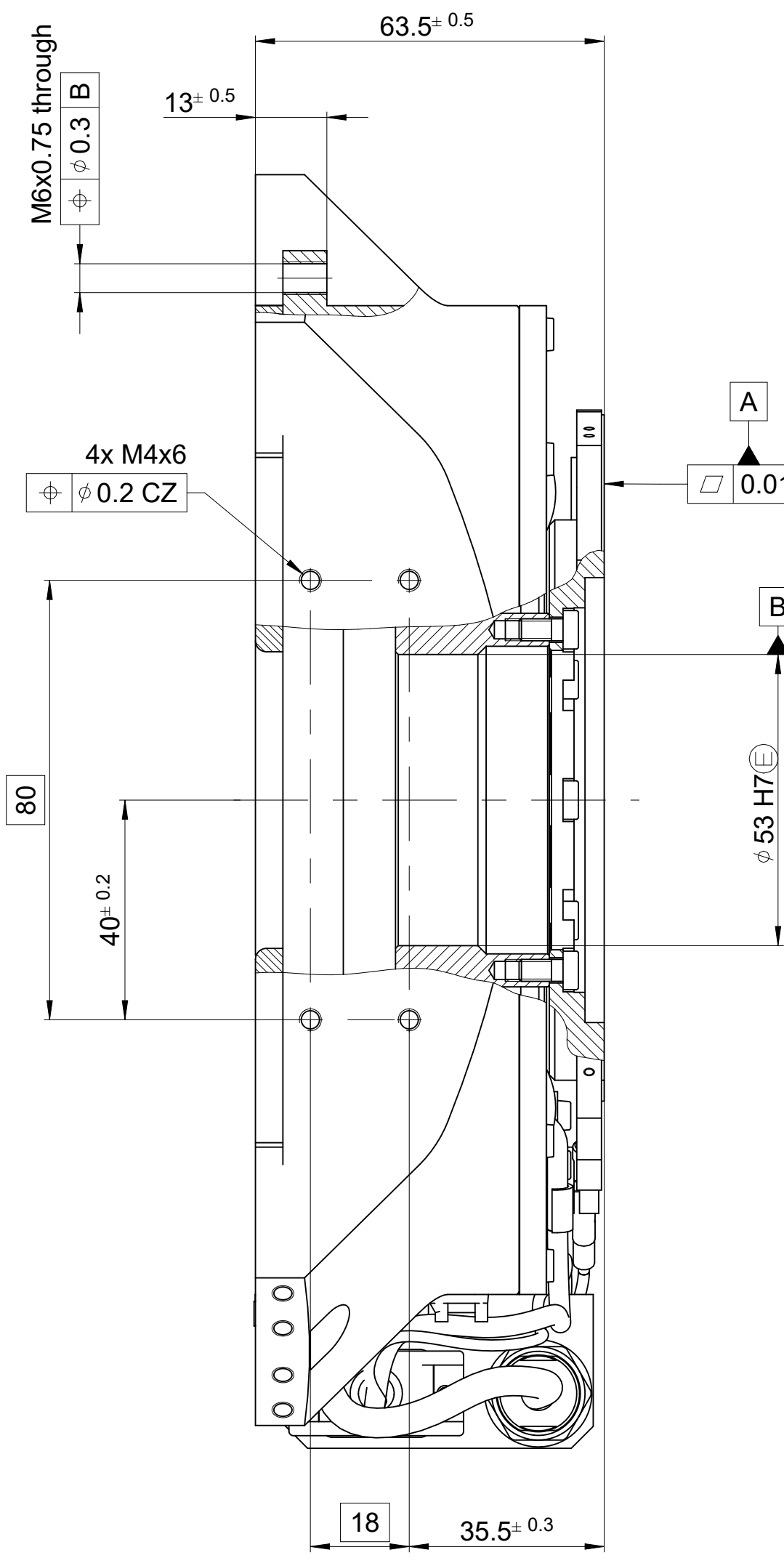
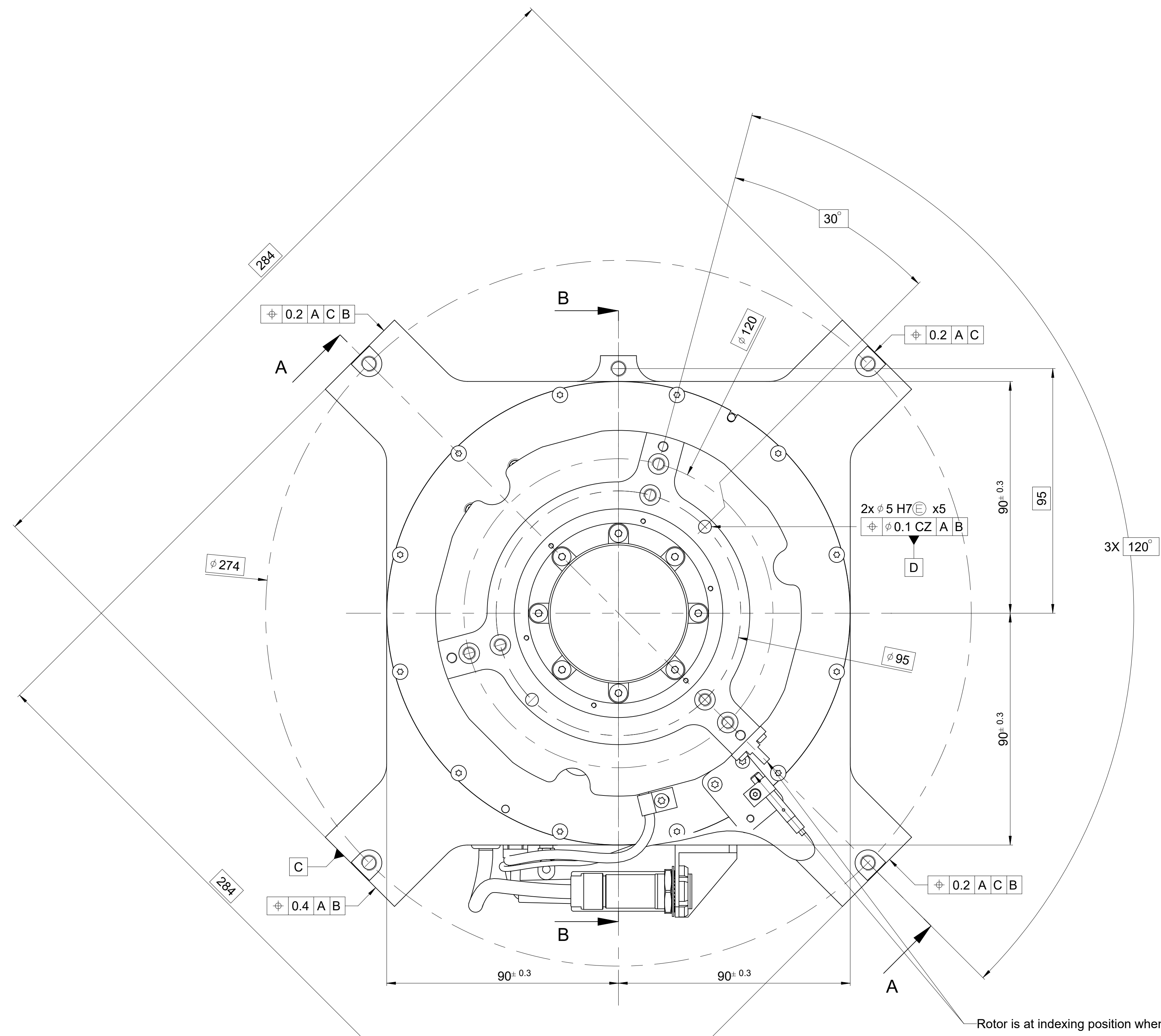
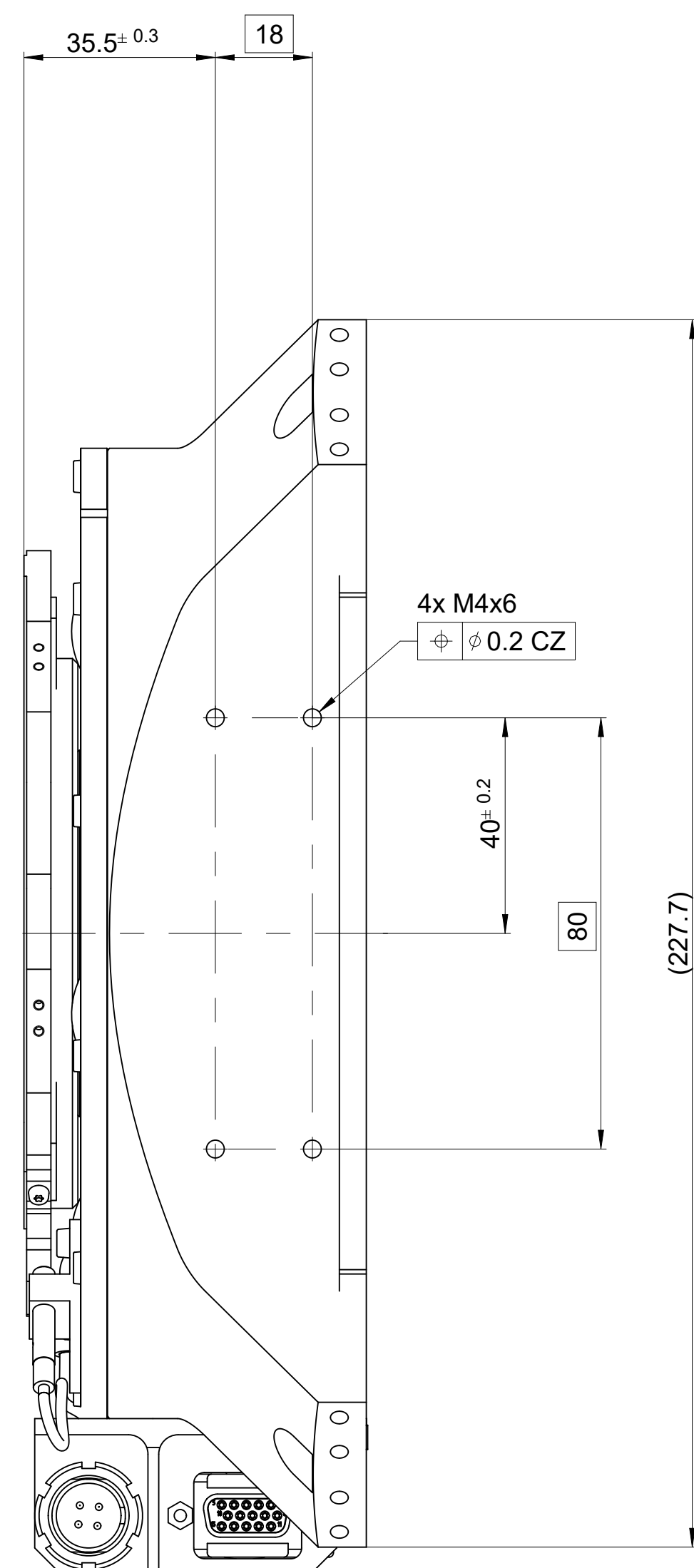
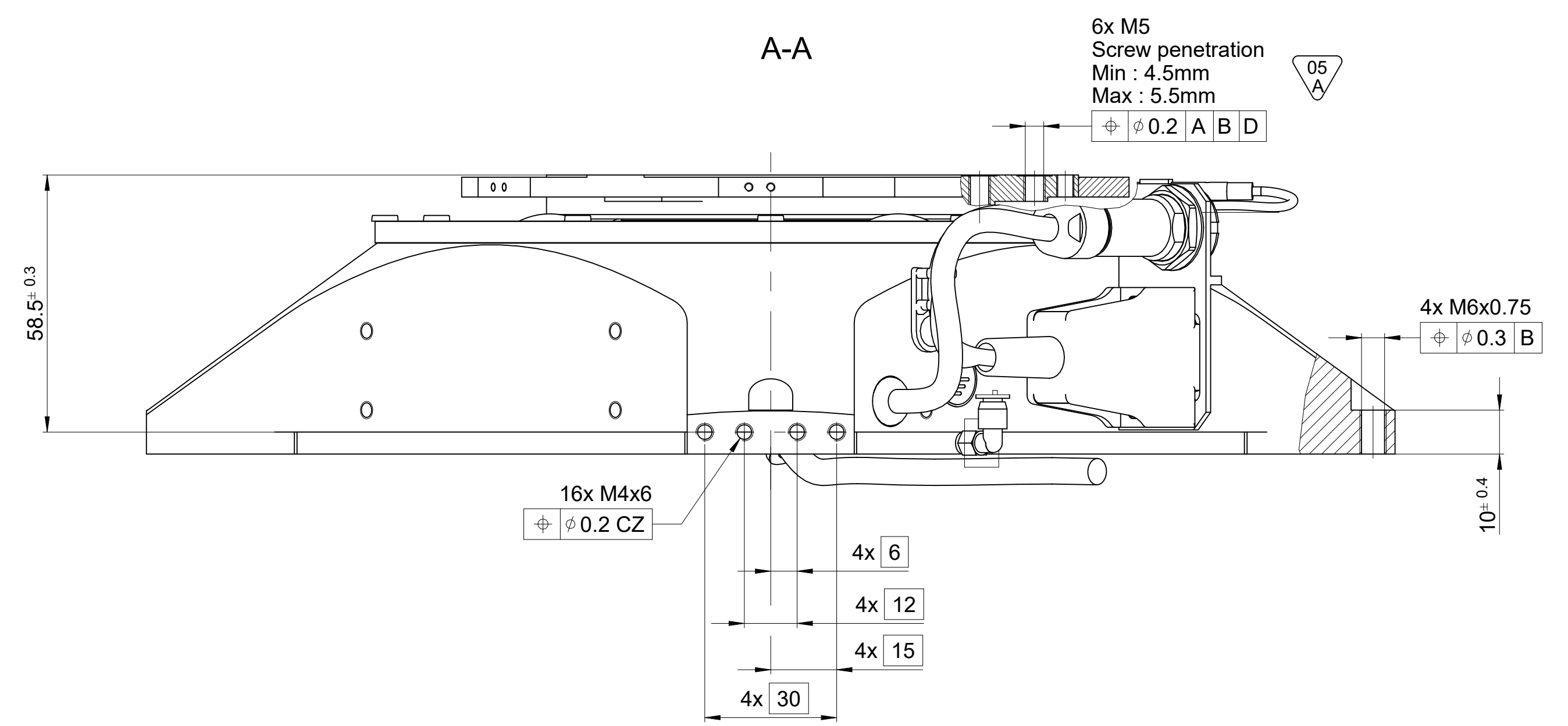
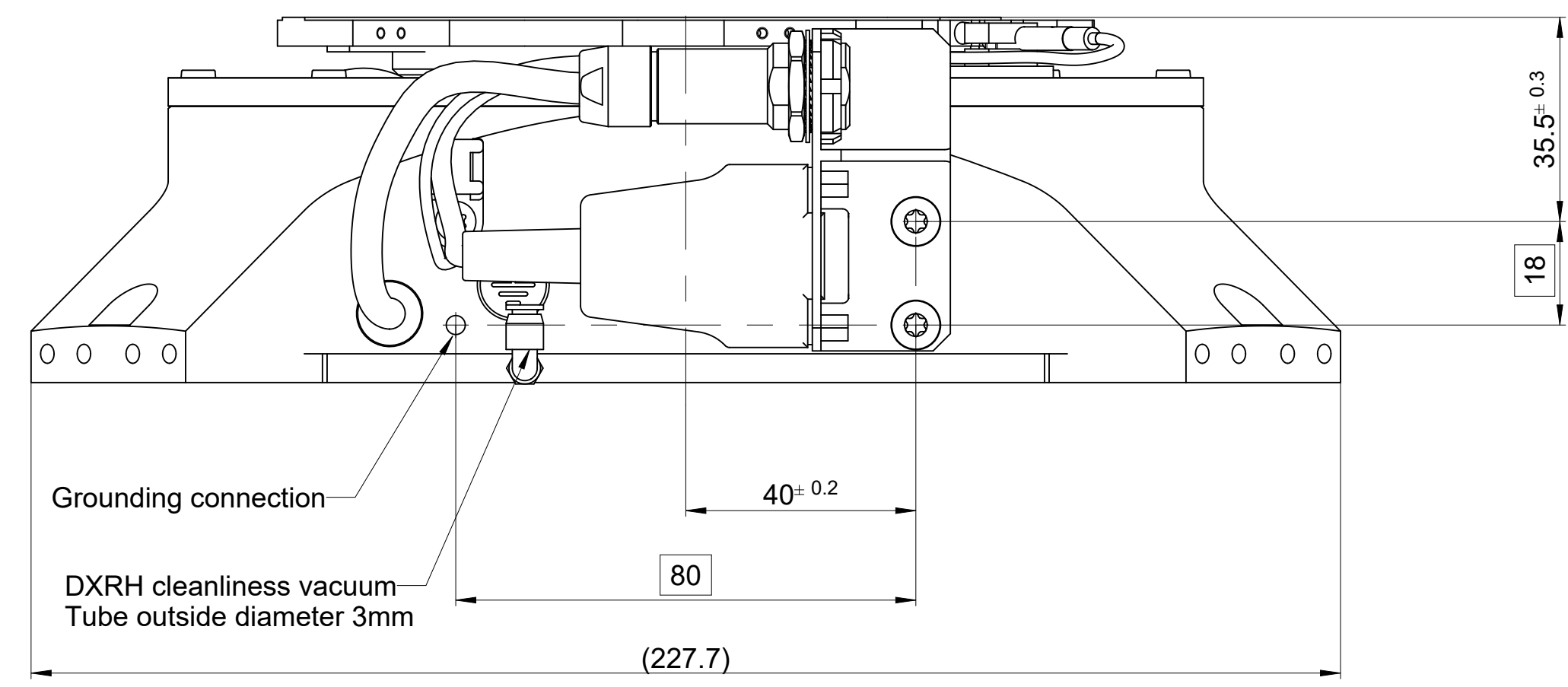
DXRH Options table	
Wobble kit	No
Kit vacuum Theta infinite	Yes
Connector support	No
364° hard stop	No
4 interface legs	Integrated
60°-300° hard stop	No



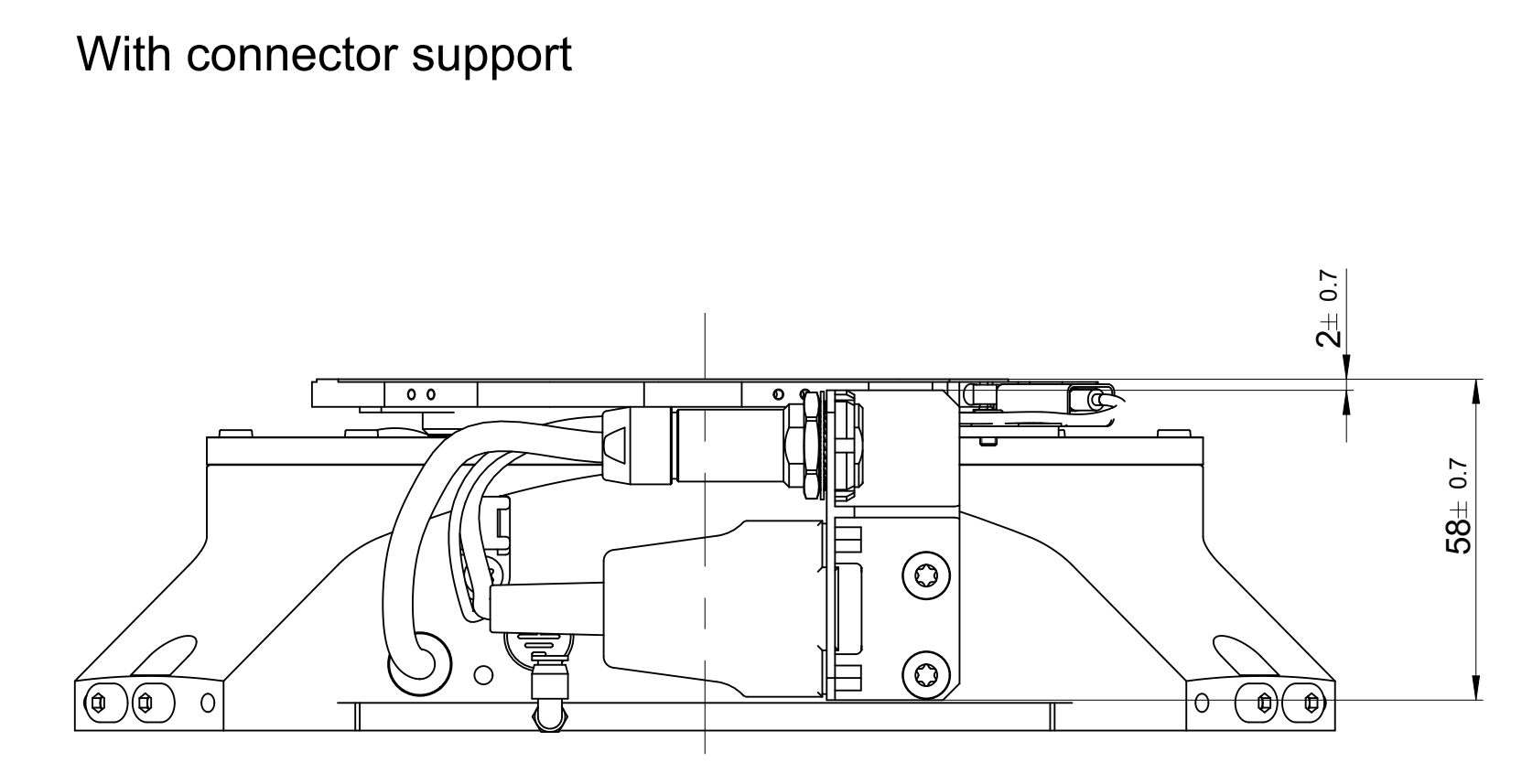
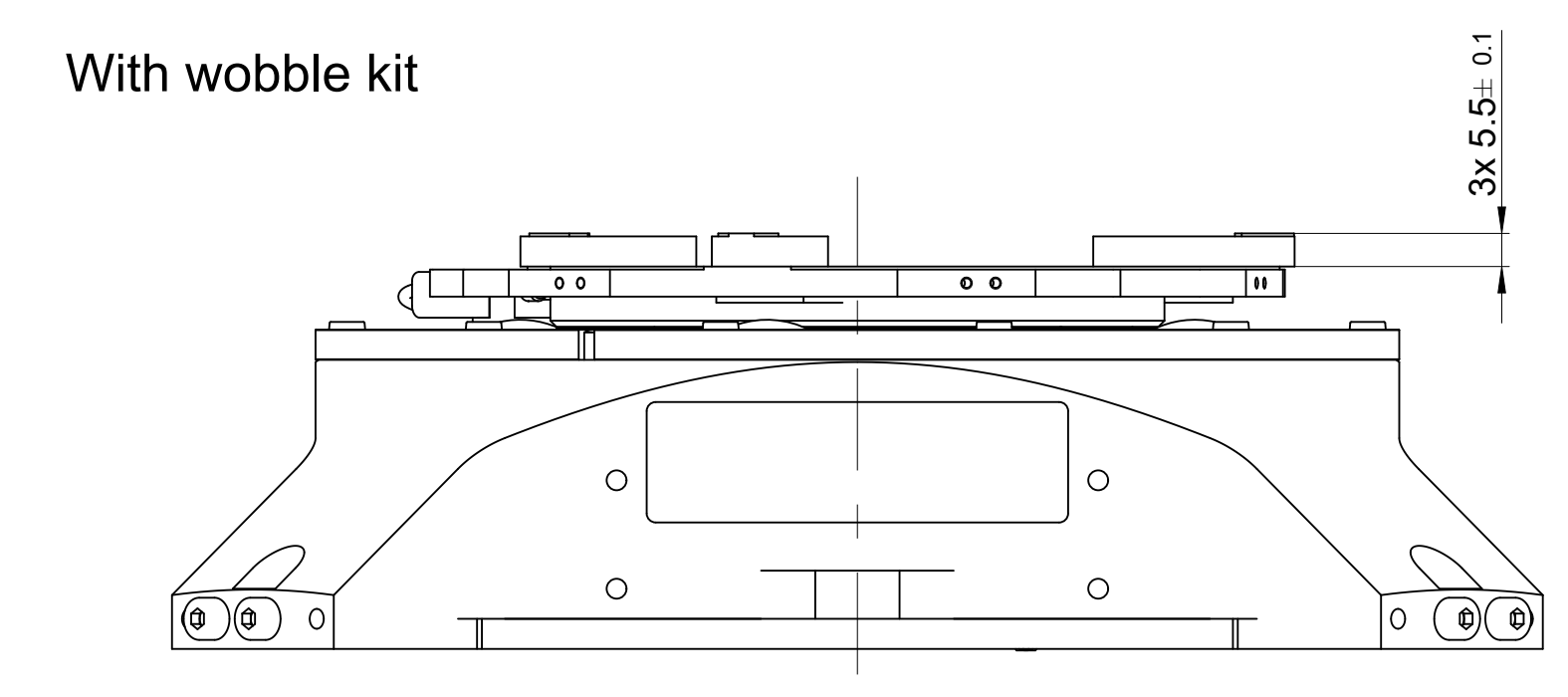
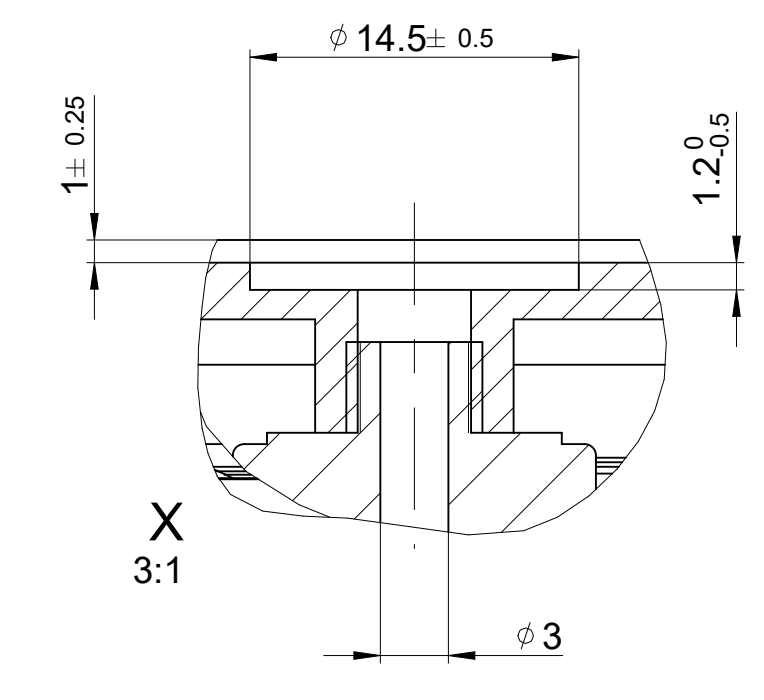


Text:		ID number:	1372595-01
Original drawing:		Change No.:	0100018488
State: 1 (final)		Released:	19.10.22
ASME-NNNN-03-0475-0410xx-XYT STACKED SYSTEM		EM as per ISO 8015: 2011	
CHARON 2 HD - XY DXRH 475x410mm		Conformance with ISO 8015: 2011	
Dimensions in mm:	3:5 A0	Scaling Dimensions / Contour environment:	Dimensions with tolerance: 0.2
The reproduction, distribution and utilization of this document as well as the communication of its contents to others without express authorization is prohibited. Offenders will be held liable for the payment of damages. All rights reserved in the event of the grant of a patent, utility model or design. (ISO 16016)			
ETEL S.A. 2112 Mörsch SWITZERLAND		Version (Revision Sheet) Page 1372599-02 - A-01 2 of 2	

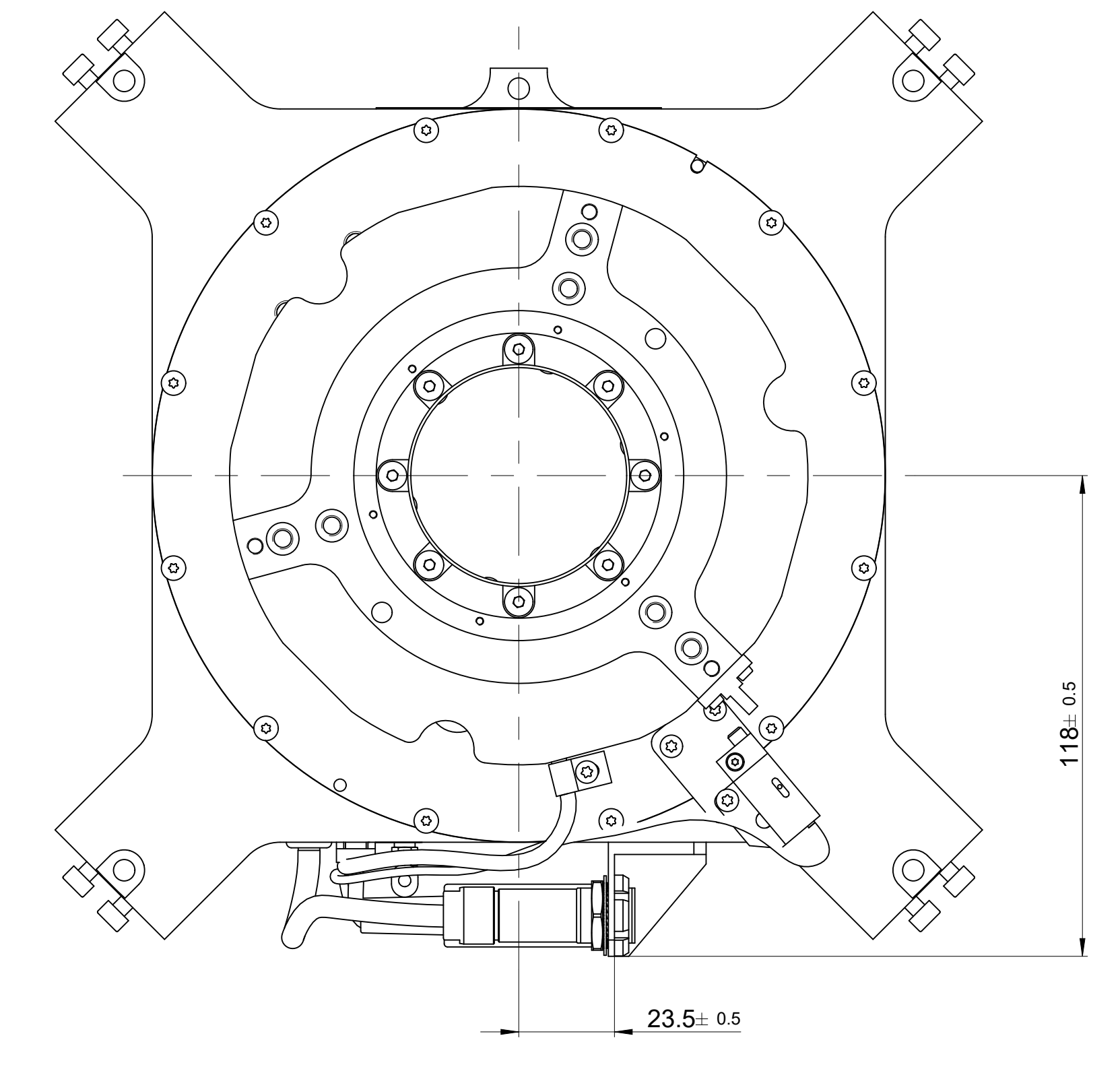
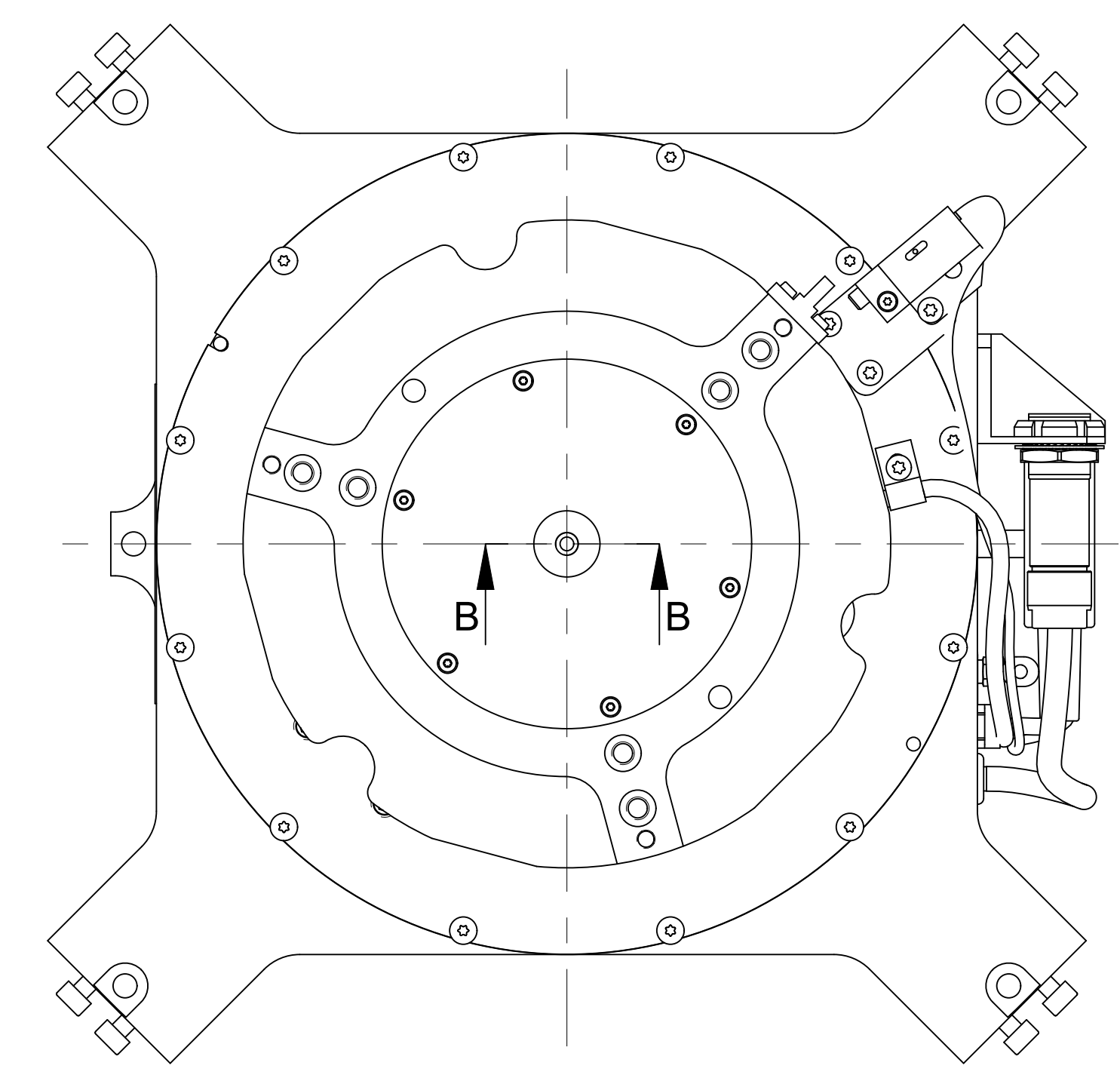
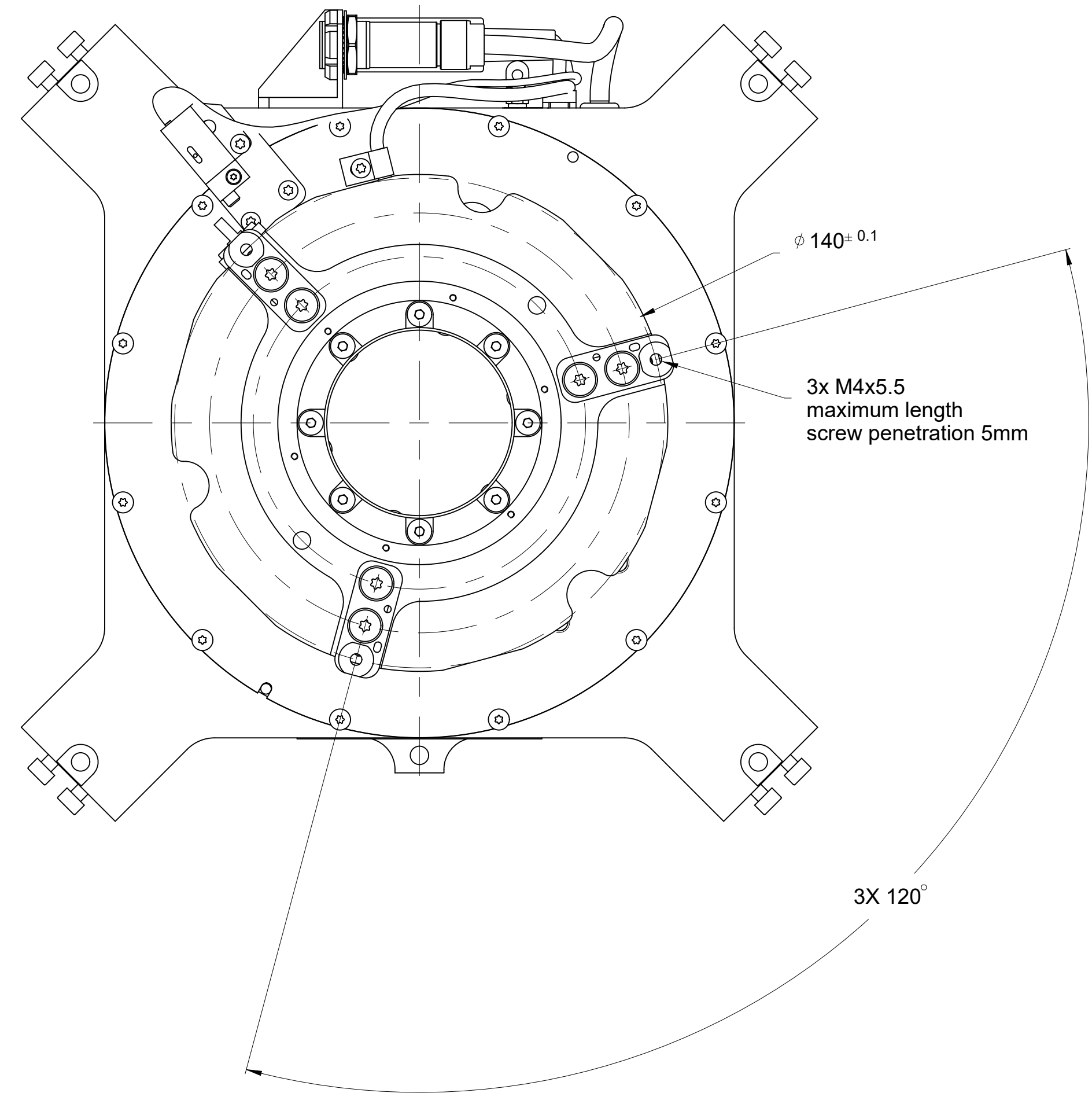
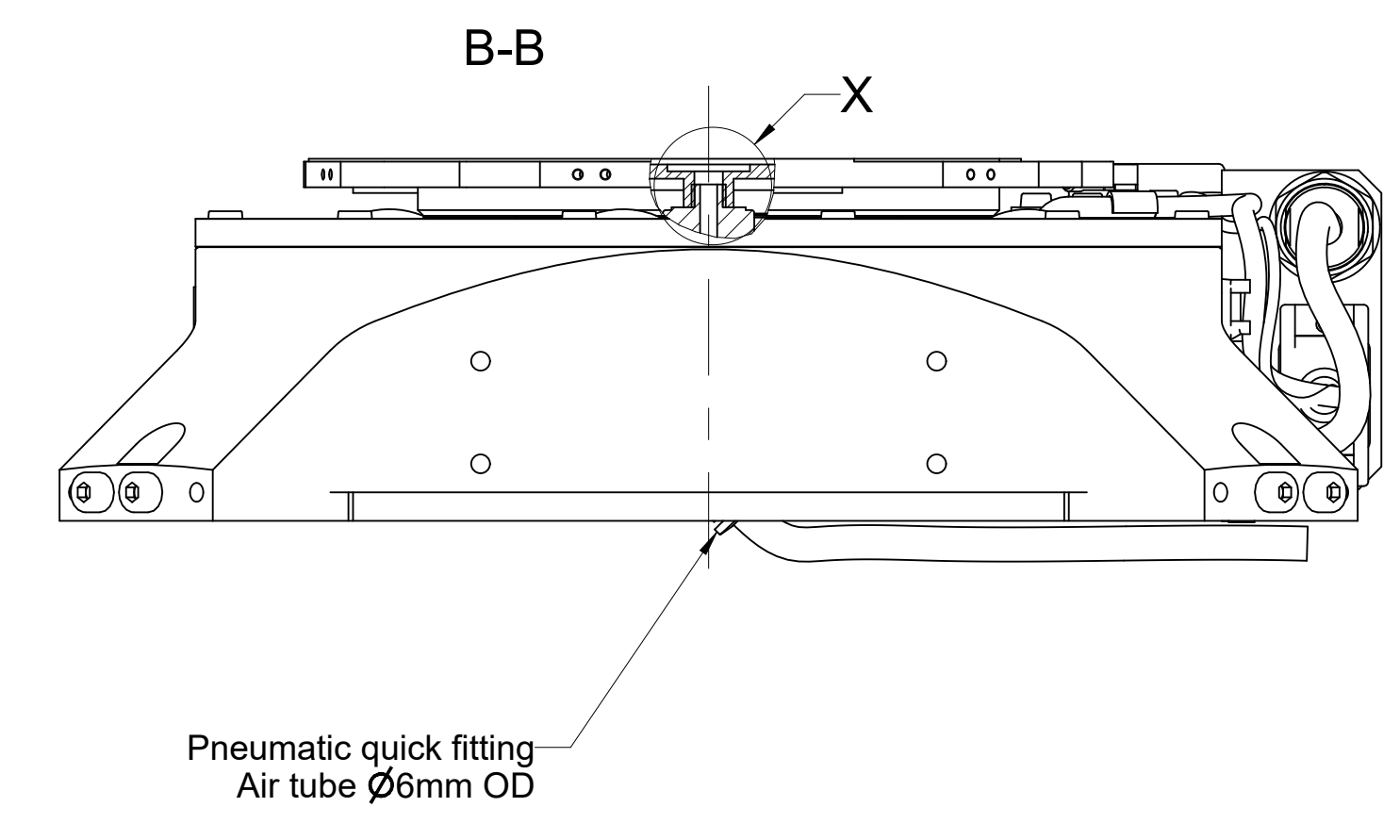




Text: Screw penetration: Define min / max		ID number: 1285346-01	
Original drawing	Scale: 1:1	Format: A0	Change No.: C139467-25
RoHS	1:1	A0	Released: 16-05-2022
DXRH0180-020 - full options		Material: Matiere:	
DXRH0180-020 - toutes options			
Dimensions in mm / Cotes en mm	Mating Dimensions / Cotes d'assemblage	Surface as per ISO 1302	
Workpiece edges ISO 13715	General tolerances ISO 2768-mK	Etats de surface selon ISO 1302	
± 0.1	± 0.3	Tolérances générales ISO 2768-mK	
± 0.3	± 0.0	Tolérances selon ISO 2015: 2011	
Tolerances as per ISO 8015: 2011		Surface treatment: Traitement de surface	
The reproduction, distribution and utilization of this document as well as the communication of its contents to others without express authorization is prohibited. Offenders will be held liable for the payment of damages. All rights reserved in the event of the grant of a patent, utility model or design. (ISO 16016)			
ETEL S.A. 2112 Môtres SWITZERLAND		Version (Revision/Sheet): Page 3 of 3	
1323364-05-A-01		Document number	



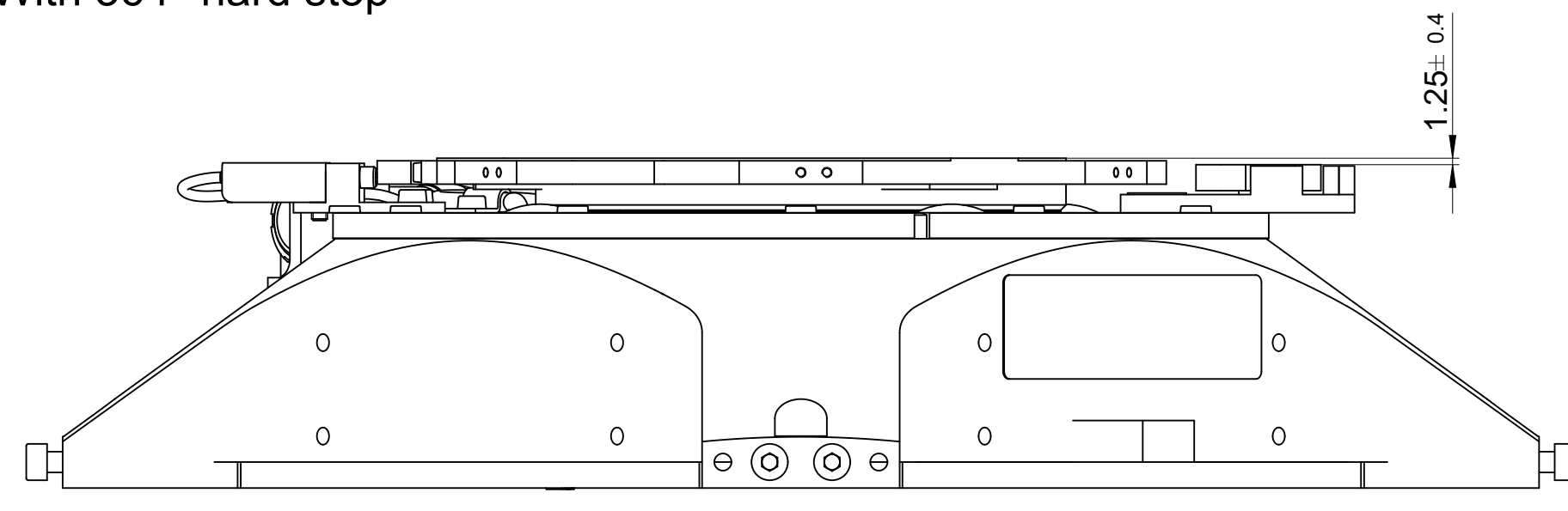
Kit Vacuum Theta Infinite



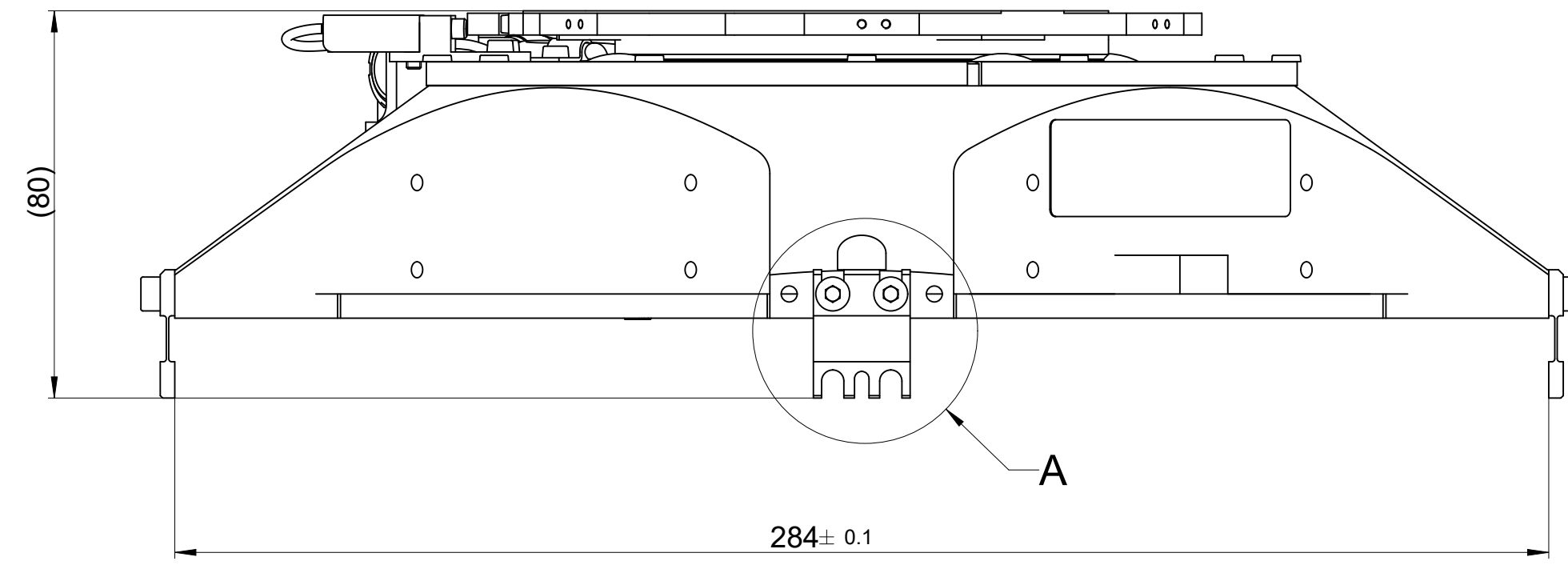
Text: Screw penetration: Define min / max		ID number: 1285346-01	
Original drawing	Scale: 4:5	Format: A0	Change No.: C139467-25
RoHS	4:5	A0	Revised: 16-05-2022
DXRH0180-020 - full options		Material: Matiere:	
DXRH0180-020 - toutes options		Material: Matiere:	
Dimensions in mm / Cotes en mm	Mating Dimensions / Cotes d'assemblage	Surface as per ISO 1302	
Workpiece edges ISO 13715	General tolerances ISO 2768-mK	Surface as per ISO 1302	
Etats de formes selon ISO 13715	Tolerances generales ISO 2768-mK	Etats de surface selon ISO 1302	
±0.1	±0.3	Surface treatment / Traitement de surface	
±0.3	±0.0	Tolerances as per ISO 8015:2011	
±0.0	±0.0	Tolerances selon ISO 8015:2011	
The reproduction, distribution and utilization of this document as well as the communication of its contents to others without express authorization is prohibited. Offenders will be held liable for the payment of damages. All rights reserved in the event of the grant of a patent, utility model or design. (ISO 16016)			
ETEL S.A. 2112 Môtres SWITZERLAND		Version (Revision/Sheet): Page 2 of 3	
1323364-05-A-01		Document number	



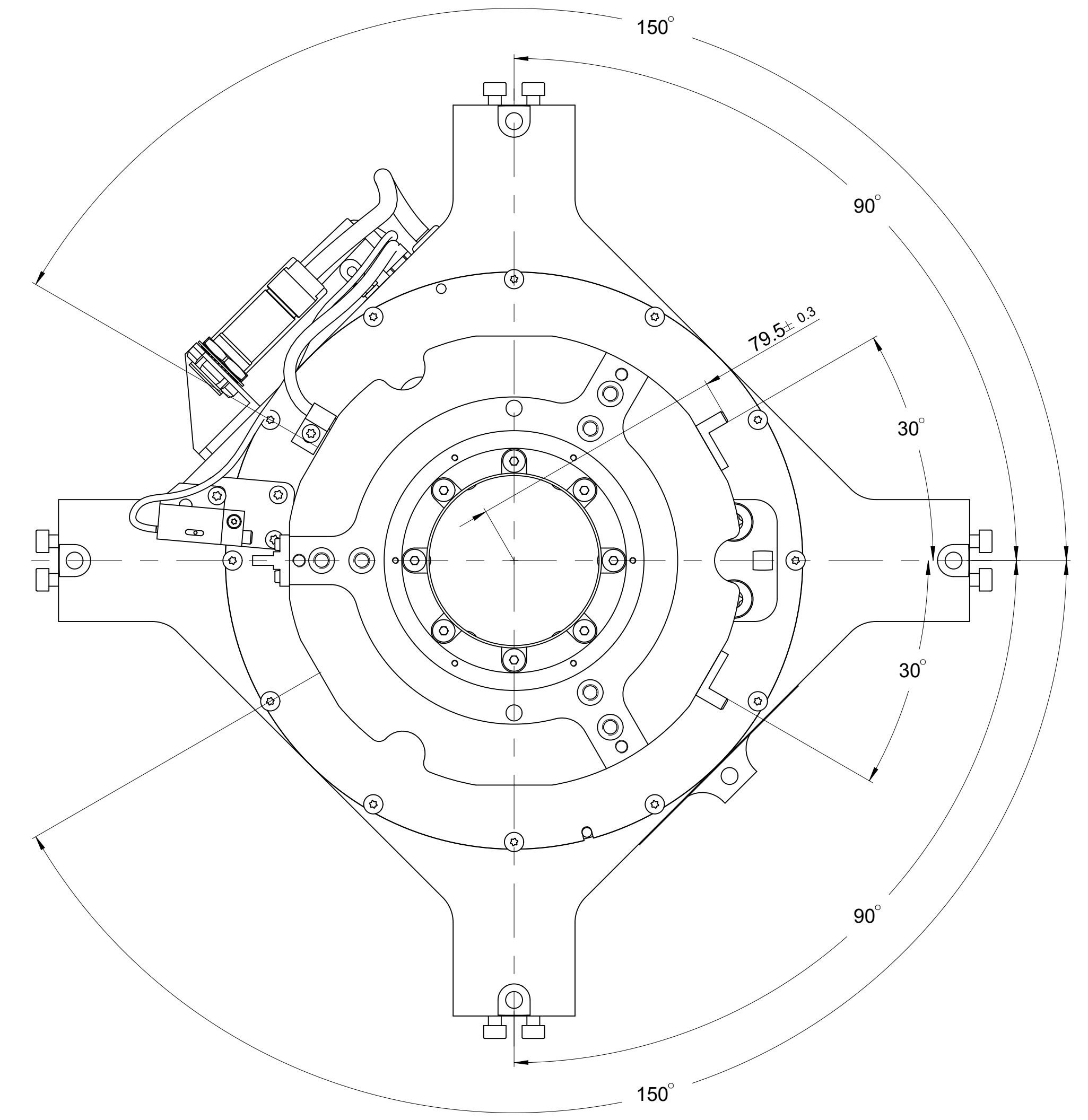
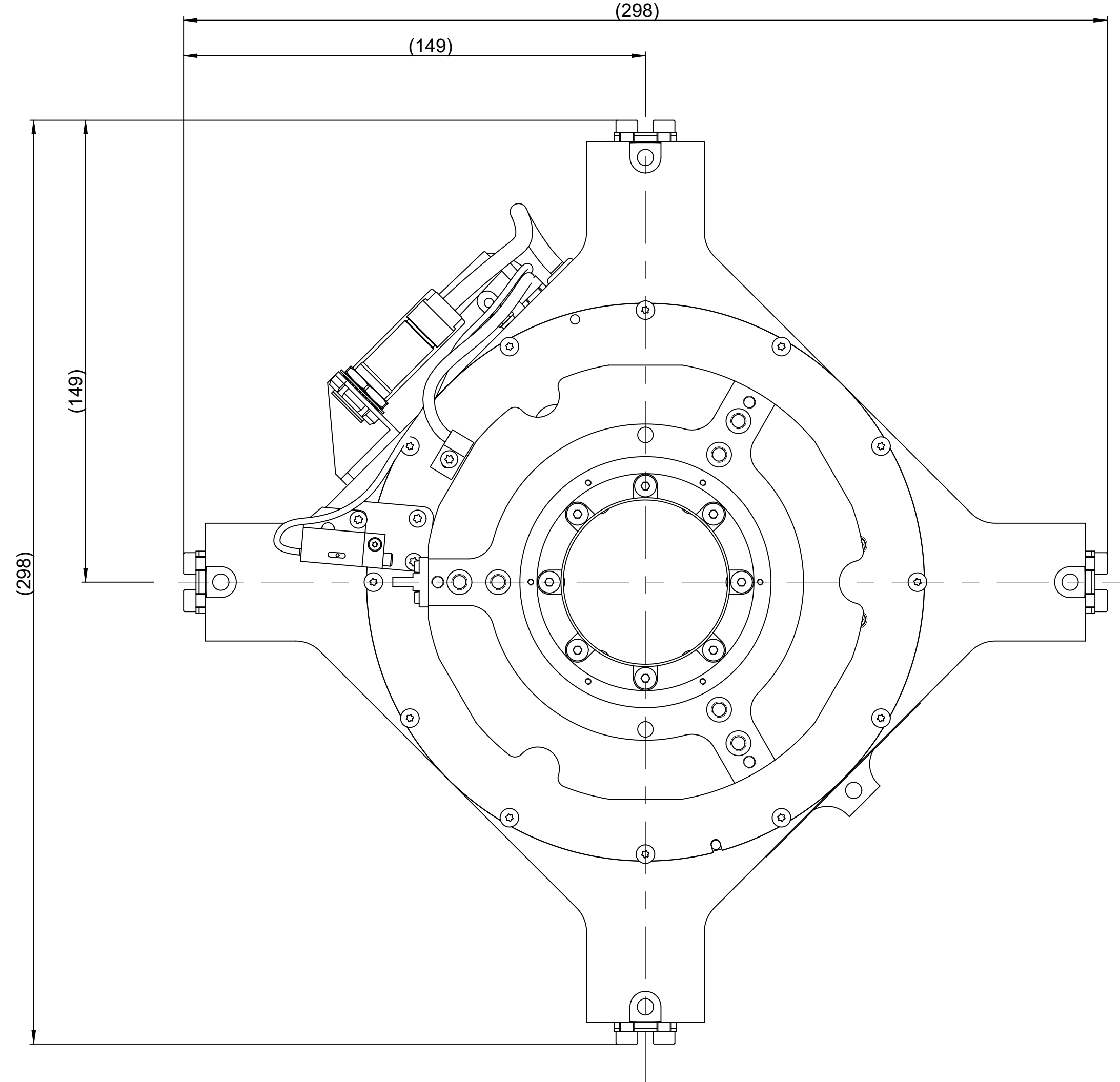
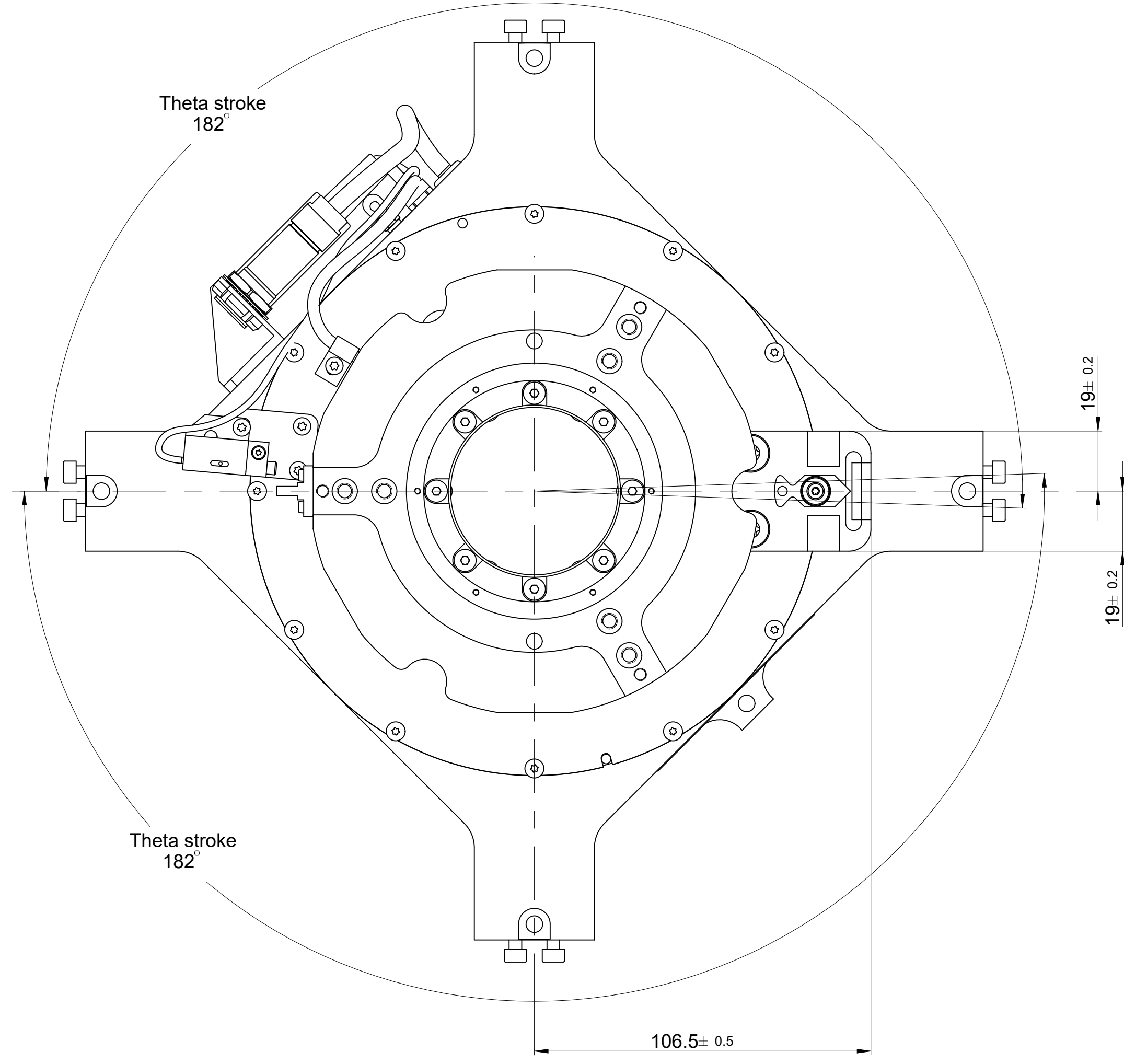
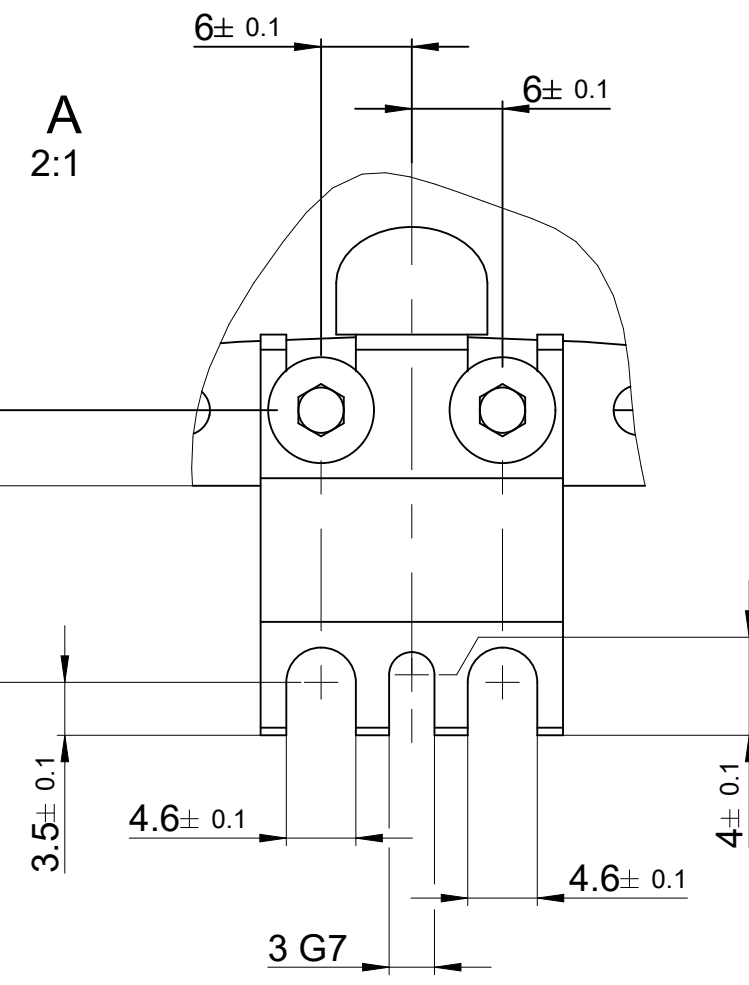
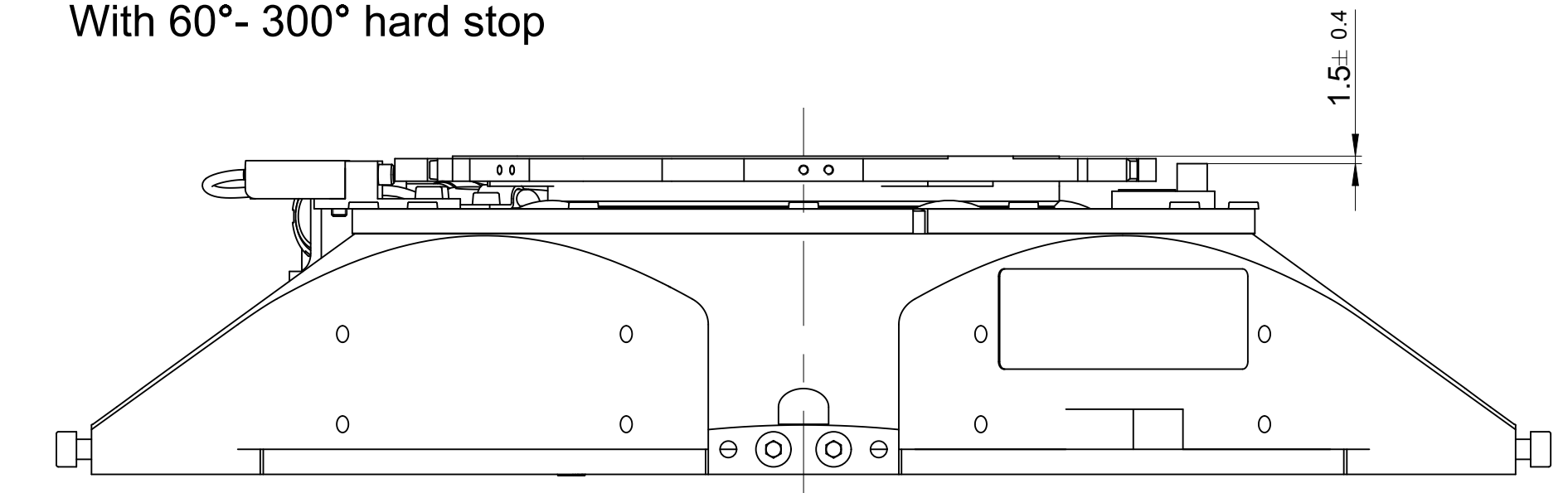
With 364° hard stop



With kit 4 interface legs



With 60° - 300° hard stop



Text: Screw penetration: Define min / max		ID number: 1285346-01	
Original drawing: DXRH0180-020 - full options		Change No.: C139467-25	
Scale: 4:5		Released: 16-05-2022	
Format: A0		Material:	
RoHS: 4:5		Material:	
Dimensions in mm / Cotes en mm: DXRH0180-020 - toutes options		Mating Dimensions / Cotes d'assemblage:	
Worked edges ISO 13715: ±0.1 / ±0.3		Surfaces as per ISO 1302	
General tolerances ISO 2768-mK: Tolerances générales ISO 2768-mK		Surface treatment: Traitement de surface	
Tolerances as per ISO 8015: 2011		Surface treatment: Traitement de surface	
Tolerances as per ISO 8015: 2011		Surface treatment: Traitement de surface	
The reproduction, distribution and utilization of this document as well as the communication of its contents to others without express authorization is prohibited. Offenders will be held liable for the payment of damages. All rights reserved in the event of the grant of a patent, utility model or design. (ISO 16016)			
ETEL S.A. 2112 Môtres SWITZERLAND		Version (Revision/Sheet): 1323364-05-A-01 3 of 3	